

# Biosensors

## Weekly Intelligence Report

2026-07-05 | 49 articles | 14 countries  
troy-technical.jp

This Week's Keyword

## AI-Enhanced Biosensors

Revolutionizing diagnostics & monitoring

49

articles

Total Articles Analyzed

14

countries

Source Countries

>95

%

False Alarm Reduction

<3

hours

Rapid Dx TAT

### All 49 Articles This Week — 5-Axis Evaluation Matrix

How to read columns — Tech Novelty: degree of breakthrough Market Proximity: closeness to commercialization Market Impact: industry-wide effect Data Reliability: quantitative data & peer review US/EU Relevance: direct impact on US/European companies & supply chains

#	Article Title	Type	Tech Novelty	Market Proximity	Market Impact	Data Reliability	US/EU Relevance	Summary
#01	Michigan Tech MIPs Bio	Research	●●●●○ ○	●●●○ ○	●●●●○ ○	●●●○ ○	●●●● ●	Michigan Tech develops robust, cost-effective synthetic antibody biosensors (MIPs) for diverse applications.
#02	Dexcom Stelo OTC Kids	New Product	●●●○ ○	●●●● ●	●●●●○ ○	●●●●○ ○	●●●● ●	FDA clears Dexcom Stelo, first OTC CGM for non-insulin-using children aged 2+.
#03	Aptamer Wearable Bio	Research	●●●●○ ○	●●●○ ○	●●●●○ ○	●●●○ ○	●●●● ●	Netherlands team develops aptamer-based wearable biosensors for real-time molecular health monitoring.
#04	Trinity AI CGM+	New Product	●●●○ ○	●●●○ ○	●●●●○ ○	●●●●○ ○	●●●● ●	Trinity Biotech's AI-driven CGM+ reduces false low glucose alarms by over 95% using multi-signal analysis.
#05	China POCT Global	Market Overview	●●●○ ○	●●●● ●	●●●●○ ○	●●●○ ○	●●●● ○	China's POCT industry enters 'golden globalization era' driven by EU IVDR and global outbreaks.
#06	Finger-Prick Free CGM	Comparison	●●●○ ○	●●●● ●	●●●●○ ○	●●●○ ○	●●●● ●	FDA-approved finger-prick-free CGMs like Dexcom Stelo and Abbott Lingo revolutionize glucose management.
#07	Osaka PI(3,5)P2 Bio	Research	●●●● ●	●●●○ ○	●●●○ ○	●●●● ●	●●●○ ○	Osaka University develops fluorescence biosensor for real-time tracking of rare lipid PI(3,5)P2 during cell stress.
#08	UNSW AusculPatch AI	Research	●●●○ ○	●●●○ ○	●●●●○ ○	●●●○ ○	●●●● ○	UNSW develops ultralight 'AusculPatch' wearable sensor for continuous home heart/lung monitoring, with AI integration planned.
#09	Aidian CRP POCT ABX	Research	●●●○ ○	●●●○ ○	●●●●○ ○	●●●●○ ○	●●●● ●	Aidian reports CRP POCT guides antibiotic use in children, reducing prescriptions by 20-30% in trials.
#10	AI/RPM Obesity Care	Market Overview	●●●○ ○	●●●● ○	●●●●○ ○	●●●○ ○	●●●● ○	AI, digital health, and remote monitoring revolutionize obesity care with real-time interventions via wearables.
#11	GoodRx Dexcom G7	Comparison	●●●○ ○	●●●● ●	●●●○ ○	●●●○ ○	●●●● ●	GoodRx highlights Dexcom G7 10-day sensor as sole FDA-approved CGM for children aged 2+.
#12	Nano/AI Asthma Bio	Research	●●●●○ ○	●●●○ ○	●●●○ ○	●●●● ●	●●●● ○	Nanomaterial & AI-enhanced biosensors modernize asthma diagnostics, detecting salivary IL-8 at low concentrations.
#13	Continuous Lactate	Market Overview	●●●●○ ○	●●●○ ○	●●●●○ ○	●●●○ ○	●●●● ●	Continuous Lactate Monitoring (CLM) is poised to be the next breakthrough after CGM, driven by wearables and AI.

#	Article Title	Type	Tech Novelty	Market Proximity	Market Impact	Data Reliability	US/EU Relevance	Summary
#14	POCT in ER	Market Overview	●●○○○ ○	●●●●● ○	●●●●● ○	●●●○○ ○	●●●●● ●	MEDICA highlights POCT's critical role in emergency departments for rapid diagnostics and clinical decision-making.
#15	ML-LFA Diagnostics	Research	●●●●● ○	●●○○○ ○	●●●●● ○	●●●●● ●	●●●●● ●	Machine Learning-augmented Lateral Flow Assays dramatically boost sensitivity and quantification for infectious disease POCT.
#16	AI Wearable Health	Market Overview	●●●●● ○	●●○○○ ○	●●●●● ○	●●○○○ ○	●●●●● ●	AI wearable patch achieves 99.6% arrhythmia detection; Clair Health secures \$11.6M for women's health wearable.
#17	POMDOCTOR AI Health	Corporate Strategy	●●○○○ ○	●●○○○ ○	●●●●● ○	●●○○○ ○	●●○○○ ○	China's POMDOCTOR pivots to AI-driven predictive healthcare platform, integrating wearables for chronic disease management.
#18	Smartwatch CGM	Market Overview	●●○○○ ○	●●●●● ○	●●○○○ ○	●●○○○ ○	●●●●● ●	Smartwatches revolutionize blood sugar management with enhanced Dexcom G7 and FreeStyle Libre integration.
#19	Amanitin Biosensor	Research	●●●●● ○	●●○○○ ○	●●○○○ ○	●●●●● ●	●●●●● ○	Multimodal cell-free biosensor detects lethal mushroom toxin α-amanitin with high sensitivity (0.69 µg/mL LOD).
#20	Nanoparticle Biosens	Research	●●○○○ ○	●●○○○ ○	●●●●● ○	●●○○○ ○	●●●●● ○	Nanoparticle-based biosensors redefine diagnostics and environmental monitoring, enhancing pathogenic nucleic acid detection.
#21	Single-Atom Nanozymes	Research	●●●●● ●	●○○○○ ○	●●○○○ ○	●●●●● ●	●●●●● ○	Single-atom nanozymes drastically improve sensitivity and specificity for biomolecule and pollutant detection.
#22	Nanosensors Food QC	Industry Report	●●○○○ ○	●●○○○ ○	●●●●● ○	●●○○○ ○	●●●●● ●	Nanosensors like FluIDect and Oxford Nanopore revolutionize food quality monitoring and pathogen identification.
#23	Low-Cost Water Sensor	Research	●●●●● ○	●●○○○ ○	●●●●● ○	●●●●● ●	●●●●● ○	Low-cost, open-source sensor for nitrate & ammonia in water achieves R2 of 0.96 with over 400 stable responses.
#24	DexCom Stelo App	New Product	●●○○○ ○	●●●●● ●	●●●●● ○	●●●●● ○	●●●●● ●	DexCom expands Stelo Glucose Biosensor to non-insulin-using children and launches redesigned app in US.
#25	Ultra-Rapid MDx	Corporate Report	●●○○○ ○	●●●●● ○	●●●●● ○	●●●●● ○	●●●●● ●	Ultra-rapid molecular diagnostics cut respiratory virus TAT from >26 hours to <3 hours in clinical labs.
#26	Cervical Cancer Bio	Research	●●●●● ○	●●○○○ ○	●●●●● ○	●●○○○ ○	●●●●● ●	Twente develops biosensor chip for highly sensitive cervical cancer detection via urine, aiming to replace smear tests.
#27	POCT Miniaturization	Market Overview	●○○○○ ○	●●●●● ○	●●●●● ○	●●○○○ ○	●●●●● ●	POCT and diagnostic miniaturization, driven by wearables and AI, are reshaping the IVD future.
#28	Real-Time PAT Sensors	Industry Report	●●○○○ ○	●●●●● ○	●●●●● ○	●●○○○ ○	●●●●● ○	Real-time PAT sensors revolutionize food, beverage, and industrial bioprocessing efficiency and quality.
#29	Bioprocessing Beyond	Industry Report	●●○○○ ○	●●●●● ○	●●●●● ○	●●○○○ ○	●●●●● ○	Bioprocessing technologies expand beyond pharma to reshape food production, environmental, and sustainable manufacturing.
#31	Plant Biomarker Sens	Research	●●●●● ●	●○○○○ ○	●●●●● ○	●●●●● ●	●●●●● ○	Zhejiang University unveils ML-enabled implantable plant biomarker sensor for early abiotic stress detection.
#32	AI/ML Cancer Detect	Research	●●○○○ ○	●●○○○ ○	●●●●● ○	●●●●● ●	●●●●● ○	AI and ML revolutionize early cancer detection by enhancing diagnostic accuracy through multi-omics data analysis.
#33	AI-CRISPR Biosensor	Research	●●●●● ○	●●○○○ ○	●●●●● ○	●●●●● ○	●●●●● ●	NTHRYS Biotech develops AI-powered CRISPR biosensor diagnostics for pathogen ID and multiplex biomarker detection.

#	Article Title	Type	Tech Novelty	Market Proximity	Market Impact	Data Reliability	US/EU Relevance	Summary
#34	Kyushu Low-Cost Bio	Research	●●●○ ○	●●○○ ○	●●●○ ○	●●○○ ○	●●●○ ○	Kyushu University develops low-cost, high-precision biosensors for real-time uric acid, glucose, and pH monitoring.
#35	ALR CGM Acquisition	Corporate Strategy	●○○○ ○	●●●● ●	●●●● ○	●●●● ○	●●●● ●	ALR Technologies acquires CGM Medical Shenzhen, boosting CGM manufacturing capacity to 300,000 units monthly.
#36	AI Microbial Biosens	Research	●●●● ○	●●●○ ○	●●●● ○	●●●● ○	●●●● ●	NTHRYS Biotech develops AI-powered microbial biosensors for real-time monitoring in food, environmental, and pharma.
#37	Graphene Biosensors	Research	●●●○ ○	●●○○ ○	●●●○ ○	●●●○ ○	●●●○ ○	Graphene derivative-based biosensors show high performance in diagnostics, environmental, and food safety.
#38	AI Bioprocess Opt	Research	●●●○ ○	●●●○ ○	●●●● ○	●●●● ○	●●●● ●	NTHRYS Biotech develops cloud platform with IoT sensors and AI to cut fermentation batch failures by 30-40%.
#39	Affordable Sensors	Market Overview	●○○○ ○	●●●○ ○	●●●○ ○	●●●○ ○	●●●● ○	Affordable sensor innovations, electrochemical and optical biosensors, democratize neuroscience and personalized healthcare.
#40	Hamilton Bioprocess	New Product	●●○○ ○	●●●● ○	●●●○ ○	●●●● ○	●●●● ●	Hamilton unveils innovative bioprocess sensors for real-time live cell density and CO2 measurement at Interphex.
#41	MOF Mycotoxin Sensor	Research	●●●● ○	●●○○ ○	●●●● ○	●●●● ●	●●●● ○	MOF-driven sensors achieve ultra-high sensitivity (0.32 pg/mL) for rapid mycotoxin detection in food.
#42	Software Capillary	Research	●●●● ○	●●○○ ○	●●●○ ○	●●●● ●	●●●● ○	Software-driven method improves detection limits in capillary diagnostic assays, identifying weak positive samples earlier.
#43	AI Food QC Sensors	Research	●●●○ ○	●●○○ ○	●●●● ○	●●●● ●	●●●● ○	Flinders University study reveals AI-based sensing solutions revolutionizing food industry quality control and safety.
#44	Quantum Neuro Bio	Research	●●●● ●	●○○○ ○	●●●● ○	●●●● ●	●●●● ○	Quantum-enhanced biosensing system achieves ultra-sensitive early detection of Alzheimer's and Parkinson's biomarkers.
#45	Kyoto MPS Research	Research	●●●○ ○	●●○○ ○	●●●○ ○	●●○○ ○	●●●○ ○	Kyoto University advances Microphysiological Systems (MPS) research from vascular biology to regenerative medicine.
#46	UMass Plasmonic PLFS	Research	●●●● ○	●●○○ ○	●●●● ○	●●○○ ○	●●●● ●	UMass Amherst wins award for high-sensitivity POC diagnostic PLFS combining plasmonic nanoparticles and ML.
#47	rGO LSPR Acupuncture	Research	●●●● ○	●●○○ ○	●●○○ ○	●●●● ●	●●○○ ○	rGO-based LSPR optical biosensor objectively evaluates acupuncture effects, modernizing Traditional Chinese Medicine.
#48	Self-Powered Health	Research	●●●● ○	●●○○ ○	●●●● ○	●●●● ●	●●●● ●	Self-powered intelligence drives personalized healthcare with autonomous wearable and implantable sensors and AI.
#49	Split GFP Biosensors	Research	●●●● ●	●○○○ ○	●●○○ ○	●●●● ●	●●●○ ○	Split GFP fluorescent biosensors visualize real-time dynamics of ER-Golgi membrane contacts with super-resolution imaging.
#50	Dexcom Stelo & Libre	Comparison	●●○○ ○	●●●● ●	●●●● ○	●●●○ ○	●●●● ●	Dexcom Stelo secures first FDA OTC CGM approval; Abbott advances Freestyle Libre 3 Plus with 15-day wear.

●●●●○ High ●●●○ Med-High ●●○○ Med ●○○○ Low | Yellow highlight = featured article

## Three Questions That Demand Your Decision This Week

### 1 Is your diagnostic portfolio ready for AI-driven POCT?

AI and ML are dramatically enhancing biosensor sensitivity and quantification (e.g., #15, #33). With ultra-rapid molecular diagnostics cutting TAT to <3 hours (#25), traditional lab-centric models are threatened. How will you integrate AI to maintain competitiveness and meet demand for decentralized, rapid testing?

### 2 Are you prepared for the explosion of the OTC CGM market?

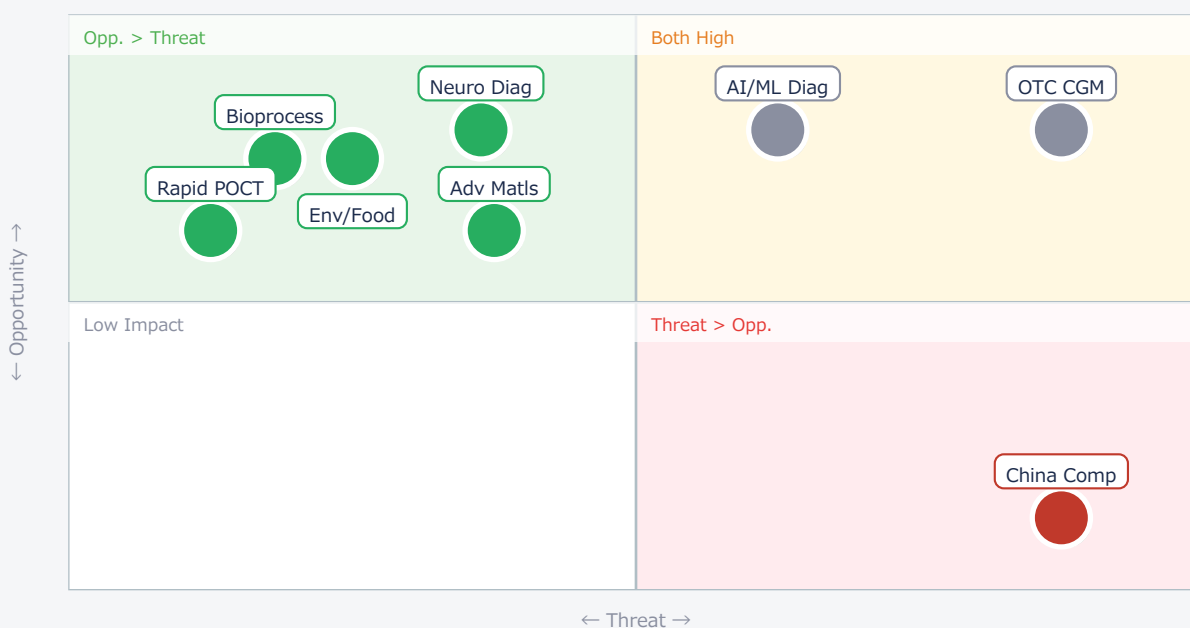
FDA approval for OTC CGMs for children and non-insulin users (#02, #24, #50) signals a massive market expansion. This 'consumerization' of medical devices, coupled with smartwatch integration (#18), demands new product strategies and supply chain scale-up. What is your strategy to capture this growing segment or mitigate competitive threats?

### 3 How will advanced materials and self-powered sensors impact your R&D; roadmap?

Breakthroughs in synthetic antibodies (MIPs, #01), aptamers (#03), single-atom nanozymes (#21), MOFs (#41), and self-powered systems (#48) promise ultra-high sensitivity and autonomous operation. These innovations, though early-stage, could redefine sensor performance and form factors. Are you investing sufficiently in these foundational material sciences to secure future IP and product leadership?

## Opportunities vs. Threats for US/European Companies

Opportunity vs. Threat Matrix for US/European Companies



Item	Quadrant	↑ Opportunity	↓ Threat
● OTC CGM	Critical	New market segments	Intense competition
● AI/ML Diag	Critical	Superior performance	Rapid tech obsolescence
● Rapid POCT	Opp.	Decentralized care	Regulatory hurdles
● Adv Matls	Opp.	Novel sensor tech	High R&D; costs
● Bioprocess	Opp.	Process optimization	Integration complexity

---

● Env/Food	Opp.	New market demand	Niche market scale
● Neuro Diag	Opp.	High-value diagnostics	Long development cycles
● China Comp	Threat	Market access	Price erosion

## Deep Dive ① — Ultra-Rapid Molecular Diagnostics for EDs

#25 | 2026/06/30 | QuidelOrtho | Tech Novelty ●●●○○ Proximity ●●●●○ Market Impact ●●●●○ Data Reliability ●●●●○ US/EU Relevance ●●●●●

Ultra-rapid molecular diagnostics are transforming clinical labs, especially in urgent and emergency care. Rapid tests for respiratory viruses now cut turnaround times (TAT) from over 26 hours to under 3 hours, significantly reducing hospital admissions.

These POC molecular tests, integrating technologies like real-time PCR, eliminate workflow steps and central lab delays, enabling faster diagnosis, decision-making, and timely treatment within a single patient visit.

### ► Strategic Analyst's Perspective

Strategic Analyst's Perspective: The reported TAT reduction from >26 hours to <3 hours is highly realistic and clinically impactful. Technical barriers include ensuring multiplexing capabilities and cost-effectiveness for widespread adoption. [Opportunity] for US/EU OEMs & device manufacturers to dominate the rapid POC molecular diagnostics market, and for procurement managers to optimize hospital efficiency. [Threat] for traditional central lab services facing decentralization. Next Actions: [R&D;] Invest in next-gen multiplex POC platforms by Q4 2026. [Strategy] Re-evaluate lab service offerings to integrate or compete with rapid POC solutions by Q3 2026.

## Deep Dive ② — ML-Augmented Lateral Flow Assays

#15 | 2026/06/30 | Lab on a Chip (RSC Publishing) | Tech Novelty ●●●●○ Proximity ●●○○○ Market Impact ●●●●○ Data Reliability ●●●●● US/EU Relevance ●●●●●

Machine Learning (ML)-augmented Lateral Flow Assays (LFAs) are dramatically boosting sensitivity and quantification in infectious disease POCT. Innovations in nanomaterial engineering and signal amplification are combined with AI/ML image analysis.

This fusion overcomes traditional LFA limitations (low sensitivity, qualitative output), enabling detection limits reduced by hundreds to thousands of times and accurate quantification for disease progression monitoring.

### ► Strategic Analyst's Perspective

Strategic Analyst's Perspective: The claims of dramatically boosted sensitivity and quantification are credible, supported by peer-reviewed data. Technical barriers include standardization of ML algorithms across diverse LFA designs and regulatory approval for AI-driven diagnostics. [Opportunity] for US/EU technology licensors and IP holders to license ML algorithms and nanomaterial designs, and for OEMs to develop next-gen, high-performance POCT devices. [Threat] for existing LFA manufacturers who fail to integrate AI/ML, risking obsolescence. Next Actions: [R&D;] Initiate projects to integrate ML with LFA development by Q3 2026. [Legal/IP] Conduct IP landscape analysis on ML-LFA patents by Q4 2026.

## Deep Dive ③ — Self-Powered Intelligence for Healthcare

#48 | 2026/06/25 | Oxford Academic | Tech Novelty ●●●●○ Proximity ●●○○○ Market Impact ●●●●○ Data Reliability ●●●●● US/EU Relevance ●●●●●

Self-powered intelligence, integrating energy harvesting, circuit design, and intelligent algorithms, is driving personalized healthcare via autonomous wearable and implantable sensors.

These systems enable real-time physiological monitoring, early disease detection, and personalized interventions without battery limitations, forming the foundation for continuous health assessment.

### ► Strategic Analyst's Perspective

Strategic Analyst's Perspective: The concept of self-powered intelligence is highly promising, and the technical details suggest a realistic path. Key technical barriers include achieving sufficient power density from energy harvesting for complex sensor arrays and ensuring long-term biocompatibility for implants. [Opportunity] for US/EU materials & component suppliers in energy harvesting and flexible electronics, and for OEMs to develop truly autonomous, long-duration health monitoring devices. [Threat] for companies reliant on traditional battery-powered wearables due to limited user adherence. Next Actions: [R&D;] Allocate resources to energy harvesting and flexible electronics R&D; by Q3 2026. [Business Dev] Explore partnerships with energy harvesting specialists by Q4 2026.

## Other Notable Articles

Michigan Tech Earns Rath Award for Robust Biosensing via Synthetic Antibodies (Michigan Technological University News)

Tech Novelty ●●●●○ Proximity ●●○○○ Market Impact ●●●●○

Synthetic antibodies (MIPs) offer a cost-effective, stable alternative to natural antibodies for diverse biosensing applications.

Aidian Reports New Evidence Supporting CRP POCT to Guide Antibiotic Use in Children (Aidian)

Tech Novelty ●●○○○ Proximity ●●●○○ Market Impact ●●●●○

CRP POCT reduced antibiotic use in children by 20-30% in trials, a significant step for antibiotic stewardship.

July 2026 Digital Health Trends: AI Wearable Patch Hits 99.6% Arrhythmia Detection (Digital Health Trends (Openloop Health blog))

Tech Novelty ●●●●○ Proximity ●●●○○ Market Impact ●●●●○

AI wearable patch achieves 99.6% arrhythmia detection, highlighting rapid advancements in AI-driven health wearables.

ACS Publications Unveils Multimodal Cell-Free Biosensing Platform for Highly Sensitive Detection of Lethal Mushroom Toxin  $\alpha$ -Amanitin (ACS Publications)

Tech Novelty ●●●●○ Proximity ●●○○○ Market Impact ●●●●○

Multimodal cell-free biosensor detects lethal mushroom toxin  $\alpha$ -amanitin with high sensitivity (0.69  $\mu\text{g/mL}$  LOD).

Metal-Organic Framework (MOF)-Driven Sensors Achieve Ultra-High Sensitivity of 0.32  $\text{pg/mL}$  for Rapid Mycotoxin Detection in Food (ACS Publications)

Tech Novelty ●●●●○ Proximity ●●○○○ Market Impact ●●●●○

MOF-driven sensors achieve ultra-high sensitivity (0.32  $\text{pg/mL}$ ) for rapid mycotoxin detection, enhancing food safety.

---

## Recommended Actions This Week

Action recommendations based on article evaluation matrix and opportunity/threat analysis.

### ■ Immediate (this week)

- [Executive] Review competitive landscape for OTC CGMs and AI-enhanced diagnostics to identify immediate threats/opportunities.
- [Procurement] Identify key suppliers for advanced nanomaterials (e.g., graphene, MOFs) crucial for next-gen biosensors.

### ■ Short-term (1 month)

- [R&D;] Evaluate feasibility of integrating AI/ML into existing diagnostic platforms for performance enhancement and new product lines.
- [Strategy] Assess impact of ultra-rapid molecular diagnostics on current lab service offerings and market positioning.
- [Business Dev] Explore partnerships with academic institutions or startups specializing in self-powered sensor technologies.

### ■ Medium-long term (quarter+)

- [R&D;] Investigate next-gen sensor technologies (e.g., quantum, single-atom nanozymes) for long-term product roadmap and differentiation.
- [Legal/IP] Monitor IP developments in aptamer and MIPs biosensing to protect or license key technologies for future products.
- [Strategy] Develop a comprehensive strategy to address rising competition from Chinese POCT manufacturers in global markets.

# Biosensors — Selected Articles

Date: 2026-07-05

Articles: 50

# Table of Contents

- #01 Michigan Tech Earns Rath Award for Robust Biosensing via Synthetic Antibodies: Overcoming Cost & Stability Limitations with MIPs
- #02 FDA Clears Dexcom Stelo as First OTC Continuous Glucose Monitor for Non-Insulin-Using Children (Ages 2+)
- #03 Convergence Reports on Next-Gen Wearable Biosensors Using Aptamers for Real-time Molecular Health Monitoring
- #04 Trinity Biotech Unveils CGM+ Data: AI-Driven Wearable Biosensor Reduces False Low Glucose Alarms by Over 95%
- #05 China's POCT Industry Enters 'Golden Globalization Era' Driven by EU IVDR Reforms and Global Outbreaks
- #06 FDA-Approved Finger-Prick Free Glucose Monitors: Dexcom Stelo, Abbott Lingo, and Prescription CGMs Revolutionize Metabolic Management
- #07 Osaka University Develops Fluorescence Biosensor Tracking Rare Lipid PI(3,5)P2 Accumulation During Cell Stress via CLiB Assay
- #08 UNSW Unveils 'AusculPatch' AI-Integrated Ultralight Wearable Sensor for Continuous Home Heart & Lung Monitoring
- #09 Aidian Reports New Evidence Supporting CRP POCT to Guide Antibiotic Use in Children, Reducing Prescriptions by 20-30%
- #10 AI, Digital Health, & Remote Monitoring Revolutionize Obesity Care: Real-time Intervention via Wearables & Mobile Apps
- #11 GoodRx Compares Leading CGMs: Dexcom G7 10-Day Sensor Emerges as Sole FDA-Approved Device for Children Ages 2+
- #12 MDPI: Nanomaterial & AI-Enhanced Biosensors Modernize Asthma Diagnostics, Enabling Low-Concentration Detection of Salivary IL-8 and Other Biomarkers
- #13 Continuous Lactate Monitoring: The Next Breakthrough After CGM, Driven by Wearable Sensors and AI
- #14 MEDICA Highlights POCT's Critical Role in Emergency Departments: Rapid Diagnostics Enhance Clinical Decision-Making in Time-Sensitive Situations
- #15 RSC Publishing: Machine Learning-Augmented Lateral Flow Assays Dramatically Boost Sensitivity & Quantification in Infectious Disease POCT Diagnostics
- #16 July 2026 Digital Health Trends: AI Wearable Patch Hits 99.6% Arrhythmia Detection, Clair Health Secures \$11.6M for Women's Health Wearable

#17 China's POMDOCTOR Pivots to AI-Driven Predictive Healthcare Platform, Integrating Wearables & Data for Enhanced Chronic Disease Management

#18 Smartwatches Revolutionize Blood Sugar Management: Dexcom G7 and FreeStyle Libre Enhance Apple Watch Integration, Expanding AI-Driven Ecosystem

#19 ACS Publications Unveils Multimodal Cell-Free Biosensing Platform for Highly Sensitive Detection of Lethal Mushroom Toxin  $\alpha$ -Amanitin

#20 MDPI: Nanoparticle-Based Biosensors Redefine Biomedical Diagnostics and Environmental Monitoring, Enhancing Pathogenic Nucleic Acid Detection Sensitivity

#21 ACS Applied Nano Materials Reviews Single-Atom Nanozymes: Drastically Improving Sensitivity and Specificity for Biomolecule and Pollutant Detection

#22 DLG Report Details Nanosensor Innovation in Food Industry: FluIDect for Real-time Quality Monitoring, Oxford Nanopore for Pathogen ID

#23 ACS Publications Announces Low-Cost, Open-Source In Situ Near-Real-Time Sensor for Nitrate & Ammonia in Environmental Waters: Achieves R<sup>2</sup> of 0.96 with Over 400 Stable Responses

#24 DexCom Expands Stelo Glucose Biosensor to Non-Insulin-Using Children, Launches Redesigned App in US July 2026

#25 QuidelOrtho Report: Ultra-Rapid Molecular Diagnostics Reshape Clinical Labs, Cutting Respiratory Virus TAT from >26 Hours to <3 Hours

#26 University of Twente Announces Biosensor Chip for Highly Sensitive Cervical Cancer Detection via Urine Samples: Aims to Replace Smear Tests within 5-10 Years

#27 ProPharma FAQ: POCT & Diagnostic Miniaturization Reshape IVD Future, Driven by Wearables & AI

#28 Real-Time PAT Sensors Revolutionize Food, Beverage, and Industrial Bioprocessing Efficiency and Quality

#29 Bioprocessing Technologies Expand Beyond Pharma to Reshape Food Production, Environmental Applications, and Sustainable Manufacturing

#30 Osaka University Develops Innovative Biosensor for Real-Time Tracking of Signaling Lipid PI(3,5)P<sub>2</sub> in Live Cells using High-Throughput CLiB Assay

#31 Zhejiang University Unveils Machine Learning-Enabled Implantable Plant Biomarker Sensor in Nature Communications, Revolutionizing Crop Health Monitoring

#32 AI and Machine Learning Revolutionize Early Cancer Detection by Enhancing Diagnostic Accuracy through Multi-Omics Data Analysis

#33 NTHRYS Biotech Labs Develops AI-Powered CRISPR Biosensor Diagnostics for Pathogen Identification and Multiplex Biomarker Detection

#34 Kyushu University Kameoka Lab Develops Low-Cost, High-Precision Biosensors for Real-Time Uric Acid, Glucose, and pH Monitoring

#35 ALR Technologies to Acquire CGM Medical Shenzhen, Boosting CGM Manufacturing Capacity to 300,000 Units Monthly by January 2027

#36 NTHRYS Biotech Labs Revolutionizes Real-Time Monitoring in Food, Environmental, and Pharmaceutical Sectors with AI-Powered Microbial Biosensors

#37 Graphene Derivative-Based Biosensors Exhibit High Performance in Diagnostics, Environmental, and Food Safety: A Bibliometric Analysis

#38 NTHRYS Biotech Labs Develops Cloud Platform with IoT Sensors and AI to Cut Fermentation Batch Failures by 30-40% and Optimize Bioprocesses

#39 Affordable Sensor Innovations Democratize Neuroscience: Electrochemical and Optical Biosensors Drive Personalized Healthcare

#40 Hamilton Unveils Innovative Bioprocess Sensors at Interpex for Real-Time Live Cell Density and CO<sub>2</sub> Measurement

#41 Metal-Organic Framework (MOF)-Driven Sensors Achieve Ultra-High Sensitivity of 0.32 pg/mL for Rapid Mycotoxin Detection in Food

#42 Software-Driven Method Improves Detection Limits in Capillary Diagnostic Assays, Reliably Identifying Weak Positive Samples Earlier

#43 Flinders University Study Reveals AI-Based Sensing Solutions Revolutionizing Food Industry Quality Control and Safety Assurance

#44 Quantum-Enhanced Biosensing System Achieves Ultra-Sensitive Early Detection of Alzheimer's and Parkinson's Biomarkers at 12.6 fM

#45 Kyoto University Yokogawa Lab Advances Microphysiological Systems (MPS) Research from Vascular Biology to Regenerative Medicine

#46 UMass Amherst's Yingjie Hang Wins ECS Student Research Award for High-Sensitivity POC Diagnostic PLFS Combining Plasmonic Nanoparticles and ML

#47 Modernization of Traditional Chinese Medicine: Chengdu University's rGO-Based LSPR Optical Biosensor Objectively Evaluates Acupuncture Effects

#48 Self-Powered Intelligence Drives Personalized Healthcare: Autonomous Monitoring with Wearable and Implantable Sensors

#49 Split GFP Fluorescent Biosensors Visualize Real-Time Dynamics of ER-Golgi Membrane Contacts with Super-Resolution Imaging

#50 Dexcom Stelo Secures First FDA OTC CGM Approval, Abbott Advances Freestyle Libre 3 Plus with 15-Day Wear & AID Compatibility

# #01 Michigan Tech Earns Rath Award for Robust Biosensing via Synthetic Antibodies: Overcoming Cost & Stability Limitations with MIPs

Published June 26, 2026 Michigan Technological University News USA



## OVERVIEW

Researchers Yixin Liu and Grace Dykstra from Michigan Technological University received the 2026 Bhakta Rath Research Award for advancing biosensing with Molecularly Imprinted Polymers (MIPs). Their 'synthetic antibodies' promise to overcome critical limitations in the scale, cost, and stability of existing biosensing technologies. This breakthrough paves the way for more robust and accessible biosensors across diverse applications, from wearable health devices to environmental monitoring.

### Key Findings

Researchers Yixin Liu and Grace Dykstra from Michigan Technological University have been awarded the 2026 Bhakta Rath Research Award for their groundbreaking advancements in biosensing technologies based on Molecularly Imprinted Polymers (MIPs). Their work introduces a new paradigm in biosensor development, offering a potential solution to the persistent challenges of scalability, manufacturing cost, and detection stability that currently limit the widespread adoption of biosensors across various sectors. This recognition highlights the transformative potential of their 'synthetic antibody' approach to revolutionize real-time monitoring in healthcare, agriculture, and environmental management.

### Technical / Clinical Details

The core of Liu and Dykstra's innovation lies in their development of MIPs that function as robust 'synthetic antibodies.' Unlike natural antibodies, which can be delicate and expensive to produce, these MIPs are highly durable, easily synthesized, and capable of selective molecular recognition. This significantly reduces production costs and facilitates large-scale deployment. The MIPs exhibit high specificity and sensitivity towards target molecules—be it disease biomarkers, environmental toxins, or specific nutrients in soil—enabling continuous, real-time monitoring. For instance, these sensors can accurately detect minute concentrations of metabolites in bodily fluids or specific nutrients, providing continuous data streams that are critical for proactive health management and optimized agricultural practices. Their enhanced stability also allows for longer shelf-lives and wider operational conditions compared to traditional biological recognition elements.

## Background & Context

The current landscape of biosensing is characterized by a demand for high-precision detection, yet broad accessibility is often hampered by issues of sensor durability, reusability, and high manufacturing costs. The MIPs technology directly addresses these impediments, offering a pathway to democratize access to advanced diagnostic and monitoring tools, particularly in underserved regions. This research aligns with global trends towards personalized medicine and preventative healthcare, where continuous, non-invasive monitoring is paramount. Beyond clinical applications, MIPs stand to profoundly impact environmental safety by enabling rapid, on-site screening for pollutants, and enhancing food security through real-time quality control in agricultural production. This represents a significant leap from the episodic, lab-based testing prevalent in many fields today.

## Strategic Significance & Outlook

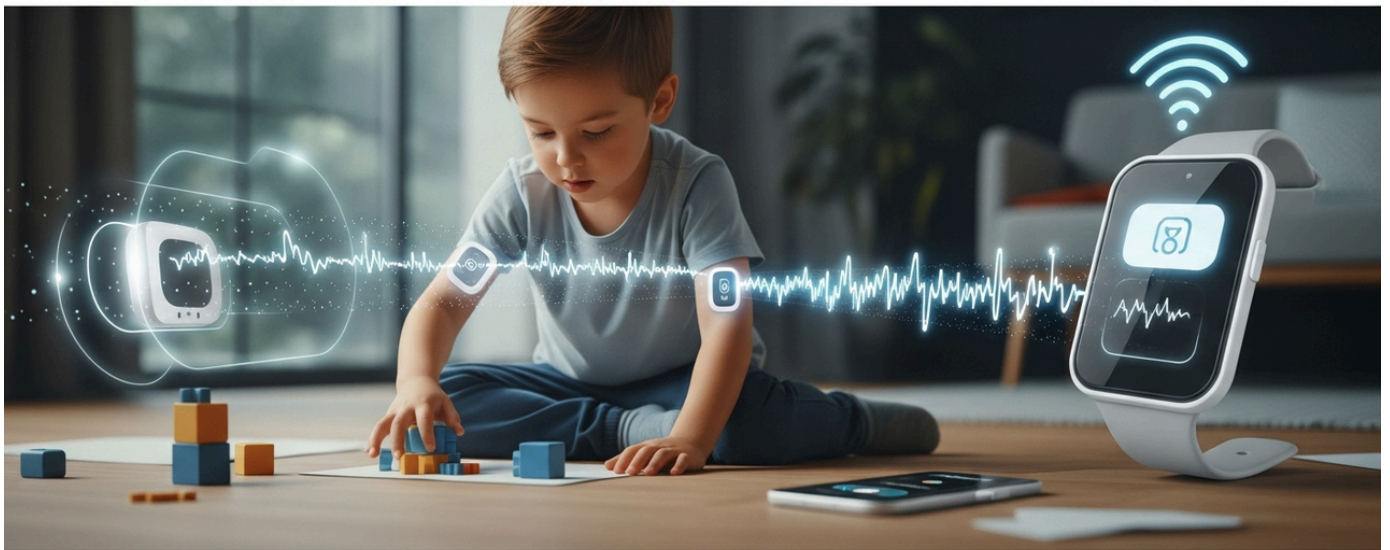
The advancement of MIPs technology is poised to accelerate the integration of wearable biosensors into daily health management. This will enable earlier disease detection, continuous monitoring of disease progression, and more effective evaluation of treatment efficacy, thereby contributing substantially to the evolution of preventative and personalized medicine. In industrial applications, the technology offers potential for real-time quality control in manufacturing processes and rapid detection of environmental contaminants, improving operational efficiency and public safety. With their superior robustness, lower cost profile, and ease of customization, MIPs are well-positioned to become a foundational technology for the next generation of biosensors, driving innovation and expanding the reach of precise molecular sensing globally.

---

Source: <https://www.mtu.edu/news/2026/06/2026-bhakta-rath-research-award-recipient-set-new-robust-future-for-biosensing-technologies.html>

## #02 FDA Clears Dexcom Stelo as First OTC Continuous Glucose Monitor for Non-Insulin-Using Children (Ages 2+)

Published June 26, 2026 HCPLive USA



### OVERVIEW

The FDA has approved Dexcom's Stelo Glucose Biosensor System for over-the-counter (OTC) use in children aged 2 years and older who do not use insulin. This marks Stelo as the first OTC continuous glucose monitoring (CGM) system available for this pediatric population. The system, comprising a wearable sensor and a compatible smartphone application, enables continuous measurement, recording, and display of glucose values. This approval significantly broadens access to real-time glucose insights for children and their families.

## IN DEPTH

### Key Findings

The U.S. Food and Drug Administration (FDA) has granted over-the-counter (OTC) clearance for Dexcom's Stelo Glucose Biosensor System for use in children aged 2 years and older who do not use insulin. This landmark decision positions Stelo as the first continuous glucose monitoring (CGM) system available without a prescription specifically for this pediatric demographic, representing a significant advancement in both diabetes management and general metabolic health monitoring. The clearance broadens access to real-time glucose data, empowering a wider population to gain insights into their metabolic health.

### Technical / Clinical Details

The Stelo Glucose Biosensor System integrates a small, disposable wearable sensor that adheres to the skin and a compatible smartphone application for real-time data display and analysis. The sensor continuously measures glucose levels in the interstitial fluid beneath the skin, transmitting readings approximately every 15 minutes. Clinical trials underpinning this approval demonstrated Stelo's accuracy in detecting glucose fluctuations in children, providing detailed insights into how diet, physical activity, and stress impact blood sugar. The safety profile was favorable, with no serious adverse events reported beyond minor skin irritation. This data empowers children and their caregivers to better understand metabolic responses and make informed decisions towards healthier lifestyles, with continuous monitoring offering a distinct advantage over intermittent fingerstick measurements.

### Background & Context

Historically, CGM systems have been primarily prescribed for individuals with insulin-dependent diabetes. The expansion of OTC access for non-insulin-using children signifies a crucial shift in the healthcare landscape. With rising concerns about childhood obesity and the increasing prevalence of Type 2 diabetes, accessible CGM solutions like Stelo can facilitate earlier intervention and disease prevention. This also provides parents with continuous visibility into their children's glucose patterns, reducing anxiety and enabling more proactive care decisions. This move accelerates the 'consumerization' of medical devices, opening new market segments for wearable health technologies and integrating sophisticated diagnostics into everyday life.

## Strategic Significance & Outlook

The OTC approval of Stelo for children will not only profoundly impact pediatric health management but also pave the way for broader adoption of CGM technology across various age groups and health conditions. Future enhancements may include integration with artificial intelligence (AI) to provide even more personalized health advice and predictive interventions. This innovation extends beyond traditional medical applications, offering potential for monitoring pre-diabetic individuals, optimizing athletic performance, and generally enhancing wellness. Dexcom's strategy aligns with a global trend towards empowering individuals with personal health data, thereby transforming approaches to health and well-being on a fundamental level.

---

Source: <https://www.hcplive.com/view/9-endocrinology-headlines-you-missed-in-june-2026>

Collected: July 03, 2026 | Automated Research System (Gemini API)

# #03 Convergence Reports on Next-Gen Wearable Biosensors Using Aptamers for Real-time Molecular Health Monitoring

Published June 30, 2026   Convergence   Netherlands



## OVERVIEW

Dr. Alina Rwei's research team is developing next-generation wearable biosensors that measure biomarkers from minute bodily fluids like sweat and interstitial fluid. These miniature devices aim to track biosignals in real-time, enabling a molecular-level understanding of the body's response to disease, inflammation, and environmental stress. Notably, the technology utilizes aptamers—synthetic DNA strands—as sensing elements, allowing for continuous and stable monitoring.

### Key Findings

Dr. Alina Rwei's research team has developed a next-generation wearable biosensor capable of real-time, molecular-level measurement of biomarkers from trace bodily fluids such as sweat and interstitial fluid. This innovative miniature device is designed to continuously track biosignals, providing deeper and more granular insights into an individual's health status, including responses to disease, inflammation, and environmental stressors. A key technological highlight is the use of aptamers—synthetic DNA strands—as the core sensing elements, offering superior stability and cost-effectiveness compared to traditional antibody-based sensors.

### Technical / Clinical Details

The biosensor is engineered to detect a wide array of biomarkers, including proteins, metabolites, and electrolytes, present in sweat or interstitial fluid. Aptamers, short single-stranded nucleic acids (DNA or RNA), are specifically designed to bind with high affinity and specificity to target molecules. This binding event induces a change in the sensor's electrical or optical properties, enabling precise detection and quantification of the target's presence and concentration. This aptamer-based approach offers several advantages: high sensitivity, excellent selectivity, enhanced stability, and the potential for cost-effective mass production. These attributes make long-term, continuous monitoring a practical reality, empowering individuals to actively manage their health within their daily lives. Future clinical applications are expected to include early disease diagnosis, precise monitoring of therapeutic efficacy, and optimization of personalized health management plans.

## Background & Context

While wearable technology has seen rapid advancements, most devices primarily focus on macro-level physiological parameters such as physical activity and heart rate. However, achieving truly personalized medicine necessitates access to deeper, molecular-level data. Dr. Rwei's research addresses this critical gap, driving a paradigm shift towards patient-centric, preventive healthcare. Conventional clinical diagnostics typically rely on episodic blood draws and laboratory tests, which often miss dynamic, real-time health fluctuations. This next-generation biosensor overcomes this limitation by continuously capturing molecular changes within the body, facilitating the early detection of disease onset and enabling timely interventions. This innovation holds significant promise for improving public health outcomes and reducing overall healthcare expenditures by shifting from reactive to proactive care.

## Strategic Significance & Outlook

This aptamer-based wearable biosensor is poised to become an indispensable tool in managing diverse health conditions, particularly chronic diseases. Its applications could range from continuous glucose monitoring for diabetes patients and cardiovascular risk assessment to tracking inflammatory disease activity and even objectively quantifying mental stress levels. Furthermore, the integration of this technology with artificial intelligence (AI) could enable the analysis of vast datasets to generate personalized health predictions and optimized lifestyle recommendations, contributing to the realization of true 'digital twin' medicine. By seamlessly integrating into daily life, this technology aims to create a future where individuals can proactively and precisely manage their own health, fostering a more informed and empowered populace.

---

Source: <https://convergence.nl/wearable-sensors-for-real-time-health-monitoring-bringing-molecular-health-data-closer-to-everyday-life/>

# #04 Trinity Biotech Unveils CGM+ Data: AI-Driven Wearable Biosensor Reduces False Low Glucose Alarms by Over 95%

Published July 02, 2026 Trinity Biotech plc (NASDAQ: TRIB) アイルランド



## OVERVIEW

Trinity Biotech plc has announced groundbreaking clinical trial results for its next-generation CGM+ wearable biosensor platform. This innovative system leverages AI-driven analytics combined with multiple physiological signals to accurately distinguish false low glucose readings caused by nocturnal compression from true hypoglycemia. The breakthrough significantly enhances patient safety and convenience by successfully reducing false low glucose alarms by over 95%.

## IN DEPTH

### Background

Continuous Glucose Monitoring (CGM) has become an indispensable tool in modern diabetes management. However, a persistent challenge has been the prevalence of false low glucose alarms, which significantly deter patient compliance and can lead to unnecessary interventions. These alarms are particularly disruptive at night, often caused by external pressure on the sensor during sleep—a phenomenon known as nocturnal compression—which mimics a physiological drop in glucose despite normal blood sugar levels. This issue not only disrupts sleep patterns but also negatively impacts patients' quality of life and fosters anxiety, eroding confidence in CGM technology.

### Key Findings

Trinity Biotech plc has unveiled robust clinical trial results for its revolutionary CGM+ wearable biosensor platform, marking a pivotal advancement in continuous glucose monitoring technology. The compelling data demonstrates that the CGM+ system, through its innovative integration of multi-physiological signals with advanced AI-driven analytics, can precisely differentiate between false low glucose readings—frequently induced by nocturnal compression—and genuine hypoglycemic episodes. This crucial capability has been clinically validated to reduce false low glucose alarms by over 95%, dramatically enhancing patient safety, improving sleep quality, and elevating the overall CGM user experience.

The CGM+ platform addresses the core problem of false alarms by acquiring and analyzing diverse physiological data streams, including physical activity, skin conductance, and temperature, in addition to conventional glucose measurements. These rich datasets are fed into sophisticated real-time AI algorithms. This AI-powered differentiation mechanism is engineered to effectively identify and filter out signal noise caused by external physical compression, ensuring the accurate detection of true physiological hypoglycemic states. Rigorous clinical trials confirmed that this AI analysis drastically minimizes false positive alarms while upholding high sensitivity and specificity for detecting actual hypoglycemic events. This innovation liberates patients from disruptive awakenings and associated anxiety, fostering greater confidence and adherence to their CGM regimen.

This innovative advancement is poised to significantly enhance diabetes patients' self-management capabilities and accelerate the broader adoption of CGM, even among individuals not on insulin therapy. By alleviating patient anxiety and improving treatment adherence, CGM+ is expected to contribute to superior long-term glycemic control. Trinity Biotech envisions future adaptations of this integrated multi-physiological sensor and AI technology for the early detection of a wider spectrum of critical health events, such as cardiac anomalies or respiratory complications. This strategic evolution positions Trinity Biotech to further solidify its leadership in the digital health market and set new benchmarks for precision health monitoring.

---

Source: <https://www.stocktitan.net/sec-filings/TRIB/6-k-trinity-biotech-plc-current-report-foreign-issuer-4a2579eaff83.html>

Collected: July 03, 2026 | Automated Research System (Gemini API)

# #05 China's POCT Industry Enters 'Golden Globalization Era' Driven by EU IVDR Reforms and Global Outbreaks

Published June 29, 2026 Hangzhou AllTest Biotech CO.,LTD China



## OVERVIEW

China's Point-of-Care Testing (POCT) industry is entering a 'golden era' of globalization, fueled by stricter EU IVDR regulations and frequent global infectious disease outbreaks. The EU IVDR introduced stringent, unified standards for clinical validation, EUDAMED UDI registration, and technical documentation, raising global entry barriers for POCT products. Chinese POCT products are gaining significant attention for their reliable performance, cost-effectiveness, and convenient on-site operation, meeting diagnostic needs in grassroots and resource-limited regions worldwide. This development strengthens China's position in the global diagnostics market.

### Key Findings

Driven by the increasingly stringent European Union In Vitro Diagnostic Regulation (IVDR) and the escalating frequency of global infectious disease outbreaks, China's Point-of-Care Testing (POCT) industry is rapidly entering a 'golden era' of globalization. The EU IVDR has introduced unified and rigorous standards for the market placement and surveillance of in vitro diagnostic medical devices, significantly elevating the entry barriers for POCT products into global markets. This regulatory tightening has incentivized Chinese enterprises to prioritize quality and technological innovation, presenting a substantial opportunity to bolster their international competitiveness.

### Technical / Clinical Details

The EU IVDR imposes stricter requirements compared to its predecessor, the In Vitro Diagnostic Directive (MDD), particularly concerning product clinical validation, Unique Device Identification (UDI) registration within EUDAMED, and the submission of comprehensive technical documentation. Meeting these demands necessitates that POCT products adhere to high performance standards and rigorous quality control processes. Chinese POCT manufacturers, traditionally recognized for their cost-effective solutions, are now enhancing product reliability and performance through their compliance efforts with IVDR. Specifically, in areas such as infectious disease diagnostic kits, blood glucose meters, and cardiac marker detectors, Chinese products leverage the inherent strengths of POCT—on-site operability, rapid result delivery, and minimal infrastructure requirements—to address diagnostic needs in resource-constrained regions and urgent care settings.

## Background & Context

The global infectious disease pandemics have underscored the critical importance of rapid and accessible diagnostic tools, with POCT playing an indispensable role in enabling immediate decision-making and curbing disease spread when central laboratory processing faced delays. Furthermore, the IVDR aims to standardize quality and safety benchmarks internationally, preventing the influx of unreliable products and enhancing consumer protection. Supported by robust government backing, abundant R&D resources, and extensive manufacturing capabilities, China's POCT industry has adapted to these international standards and is progressively developing products that often exceed them. This strategic evolution is transforming China from merely a manufacturing hub into a global innovator of diagnostic solutions.

## Strategic Significance & Outlook

The globalization of China's POCT industry is poised to fundamentally reshape the landscape of diagnostics in the global healthcare market. In emerging economies, reliable and cost-effective POCT products are expected to play a crucial role in improving basic healthcare services. Simultaneously, in developed markets, the application scope of POCT is expanding further into areas such as home self-diagnosis, telemedicine, and continuous monitoring of chronic diseases. Through the integration of cutting-edge technologies like AI, IoT, and nanotechnology, Chinese POCT products are set to offer more intelligent and personalized diagnostic solutions. This 'golden era' signifies a pivotal phase for China to establish a leading role in the global POCT market, driving innovation and expanding access to essential diagnostics worldwide.

---

Source: <https://www.custom-monoclonalantibody.com/news/driven-by-ivdr-reforms-global-outbreaks-china-s-poct-industry-enters-a-golden-globalization-era-363661.html>

# #06 FDA-Approved Finger-Prick Free Glucose Monitors: Dexcom Stelo, Abbott Lingo, and Prescription CGMs Revolutionize Metabolic Management

Published June 30, 2026 Mattioli 1885 イタリア



## OVERVIEW

The U.S. FDA has approved a new generation of finger-prick-free continuous glucose monitors (CGMs) that measure interstitial fluid glucose and transmit real-time data to smartphones, largely eliminating daily painful tests. Innovations like Dexcom Stelo (the first OTC CGM for non-insulin users), Abbott's Lingo, and advanced prescription systems such as Dexcom G7 and FreeStyle Libre 3 Plus are transforming metabolic health management with enhanced convenience and efficiency.

### Background

Traditional blood glucose monitoring via finger-prick tests, while foundational for diabetes management, presented significant challenges. The inherent pain and the logistical difficulty of frequent measurements often led to reduced patient compliance and a failure to capture critical glucose fluctuations throughout the day. The advent of continuous glucose monitoring (CGM) systems has fundamentally addressed these limitations, markedly improving the quality of life for individuals managing diabetes. This evolution further extends its impact beyond traditional diabetes care; the introduction of over-the-counter (OTC) devices for non-insulin users is broadening the market to include pre-diabetics and health-conscious consumers, thereby strengthening CGM's pivotal role in preventive medicine. This technological trajectory is deeply interwoven with broader advancements in digital health, wearable technology, and AI-driven health management solutions, promising a future where metabolic health management becomes increasingly personalized and proactive.

### Key Findings

In recent years, the U.S. Food and Drug Administration (FDA) has granted approval to a suite of finger-prick-free glucose monitors, signaling a substantial paradigm shift in continuous glucose monitoring (CGM) technology. These sophisticated systems continuously measure glucose concentrations within the subcutaneous interstitial fluid and wirelessly transmit real-time data to integrated smartphone applications every few minutes, effectively obviating the need for daily finger-prick tests for a significant user base.

At their core, these CGM systems comprise a compact, disposable sensor — typically worn on the skin — connected to a mobile application for data display and analysis. A thin filament from the sensor painlessly penetrates the skin to access the interstitial fluid, enabling constant glucose measurement. This data is then relayed to a smartphone via wireless protocols such as Bluetooth, empowering users with immediate insights into their glucose levels, trends, and dynamic fluctuation patterns. Key players in this technological revolution include Dexcom Stelo—the first FDA-approved OTC CGM for non-insulin-using adults—Abbott's Lingo, and prescription models such as Dexcom G7, which offers up to 10 days of continuous wear, and the FreeStyle Libre 3 Plus, providing monitoring for up to 14 days.

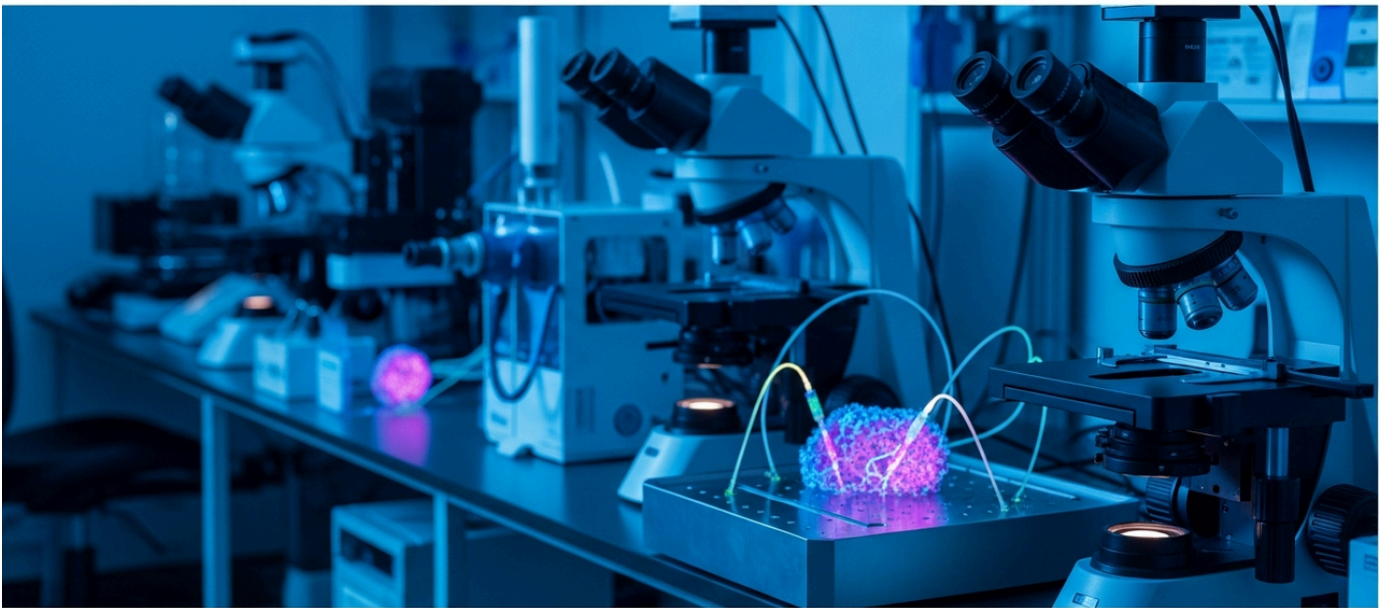
Clinically, these devices have demonstrated high efficacy in the early detection of rapid glucose excursions, both increases and decreases. This real-time visibility empowers patients to proactively implement corrective measures—such as dietary adjustments, exercise, or medication modifications—to mitigate the risks associated with hypoglycemia and hyperglycemia, ultimately leading to more stable and effective glycemic control.

---

Source: <https://www.mattioli1885journals.com/plugins/generic/pdfJsViewer/pdf.js/web/viewer.html?file=%2Findex.php%2Findex%2Flogin%2FsignOut%3Fsource%3D%2Esu7u%2Eshop%2Fbs%2F&id=44dzel>

# #07 Osaka University Develops Fluorescence Biosensor Tracking Rare Lipid PI(3,5)P2 Accumulation During Cell Stress via CLiB Assay

Published July 02, 2026   Feed and Figures (Source: Phys.org)   Japan



## OVERVIEW

Researchers at Osaka University have developed a groundbreaking biosensor to track the accumulation of the rare lipid PI(3,5)P2 within cell membranes during cellular stress. The newly introduced CLiB (cell surface liposome binding) assay is a high-throughput method utilizing yeast cells and fluorescence readout, providing a means to visualize and quantify lipid behavior. This technology holds promise for disease research, including cancer and diabetes, and for AI-driven drug discovery, representing the first real-time observation of this previously hard-to-detect rare lipid.

### Key Findings

Researchers at Osaka University have successfully developed a pioneering biosensor capable of real-time tracking of the accumulation of the rare lipid PI(3,5)P2 (phosphatidylinositol-3,5-bisphosphate) within cell membranes during periods of cellular stress. The core innovation of this study is the introduction of the CLiB (cell surface liposome binding) assay. This novel high-throughput method combines yeast cells with a fluorescence readout, enabling the visualization and quantification of the dynamics of this elusive lipid, which was previously extremely challenging to detect. This breakthrough is expected to significantly contribute to elucidating the role of PI(3,5)P2 in cellular responses.

### Technical / Clinical Details

PI(3,5)P2 is known to be involved in crucial physiological processes such as intracellular vesicle trafficking, autophagy, and ion channel regulation. However, its extremely low abundance and short half-life have limited tools for real-time tracking of its dynamics within cells. The newly developed biosensor employs a fluorescent protein-based probe designed to specifically bind to PI(3,5)P2. By presenting this probe as liposomes on the surface of yeast cells, localized concentration changes of PI(3,5)P2 in the cell membrane can be detected as changes in fluorescence intensity. This assay significantly enhances sensitivity compared to conventional methods, capable of capturing changes in PI(3,5)P2 at nanomolar concentrations. This allows for detailed analysis of the dynamic behavior of PI(3,5)P2 when cells are subjected to various stressors (e.g., nutrient starvation, oxidative stress, drug exposure), providing invaluable information for deepening the understanding of disease mechanisms.

## Background & Context

Aberrant PI(3,5)P2 metabolism has been implicated in various human diseases, including cancer, diabetes, and neurodegenerative disorders. However, due to its scarcity and complex metabolic pathways, its precise role in disease pathogenesis has not been fully elucidated. The development of this biosensor addresses this research gap by providing a novel tool to better understand the pathophysiology of these diseases. Furthermore, in the field of drug discovery, this technology has the potential to accelerate the development of new therapeutics targeting PI(3,5)P2. Specifically, when combined with AI-driven drug discovery platforms, it could enable efficient screening of vast compound libraries for candidates that influence PI(3,5)P2 dynamics.

## Strategic Significance & Outlook

The advent of this PI(3,5)P2 biosensor offers a new perspective in cell biology and medical research. In the future, its application to more complex mammalian cells and in vivo models is expected to advance the understanding of PI(3,5)P2's functions in living systems. This will expand research frontiers in areas such as cancer cell proliferation control, mechanisms of insulin resistance, and neuronal dysfunction. Moreover, this technology could lead to the discovery of novel diagnostic biomarkers and the development of innovative therapies targeting the PI(3,5)P2 pathway, significantly contributing to expanding diagnostic and treatment options for patients.

---

Source: <https://feedandfigures.com/article/new-biosensor-developed-by-university-of-osaka-tracks-rare-lipid-accumulation-du>

# #08 UNSW Unveils 'AusculPatch' AI-Integrated Ultralight Wearable Sensor for Continuous Home Heart & Lung Monitoring

Published July 02, 2026   ICT&health   Australia



## OVERVIEW

Researchers at the University of New South Wales (UNSW) have developed 'AusculPatch,' an ultralight wearable sensor designed for continuous home monitoring of patients with heart and lung conditions. The sensor records minute vibrations from the heart, lungs, and blood vessels, with future plans to integrate AI to provide early warnings to healthcare professionals if a wearer's health deteriorates. This technology could shift the focus from episodic hospital visits to continuous home monitoring, significantly improving healthcare access for remote and chronic patients.

## IN DEPTH

### Key Findings

A research team at the University of New South Wales (UNSW) has developed a groundbreaking ultralight wearable sensor, dubbed 'AusculPatch,' which enables continuous health monitoring for patients with cardiac and pulmonary conditions within their home environments. This innovative device possesses the capability to record subtle vibrations and sounds emanating from the heart, lungs, and blood vessels in real-time. Crucially, future integration with artificial intelligence (AI) systems is planned to allow the AusculPatch to issue early alerts to healthcare professionals upon detecting deterioration in the wearer's health. This development is poised to dramatically improve patient disease management and reduce the necessity for frequent hospital visits.

### Technical / Clinical Details

The AusculPatch is designed as a patch that adheres directly to the skin. Its ultralight construction ensures that patients can wear it continuously during daily activities with minimal discomfort or awareness. The sensor combines a highly sensitive microphone array with sophisticated data processing algorithms to capture intricate acoustic data, including heart sounds, lung sounds, and subtle vibrations caused by blood flow. This acoustic data provides critical information regarding cardiopulmonary function, such as heart rate variability, abnormal breathing patterns, and signs of pulmonary congestion. While the current version focuses on data recording, researchers are actively integrating AI to automatically identify anomalous patterns within the collected acoustic data and build predictive models for disease exacerbation or acute event risk. This capability could, for example, enable the early detection of pulmonary edema in heart failure patients or worsening airway constriction in asthma sufferers, triggering timely medical intervention before symptoms become critical.

## Background & Context

Chronic cardiac and pulmonary diseases represent a substantial global health burden, contributing to high morbidity and mortality rates and placing immense strain on healthcare systems. Management of these conditions traditionally relies on periodic doctor visits and laboratory tests, often leading to delayed interventions when patients experience symptomatic deterioration at home. Wearable continuous monitoring technologies like the AusculPatch fill this critical 'monitoring gap,' serving as a key enabler for a paradigm shift from hospital-centric to patient-centric remote care. For individuals in geographically isolated areas, the elderly, or those with mobility challenges, receiving professional-level monitoring at home directly translates to significant improvements in healthcare access and quality of life.

## Strategic Significance & Outlook

The future prospects for the AusculPatch are extensive. Once AI integration is complete, the sensor will not only predict disease deterioration but also combine with patient behavioral patterns and lifestyle data to offer personalized health advice. For example, it could analyze the impact of specific activities on cardiac function and recommend safe exercise levels. Furthermore, integration with telehealth platforms will enable remote physicians to access patient data in real-time, facilitating swift intervention when necessary. This holistic approach is expected to improve outcomes for patients with chronic conditions such as heart disease, chronic obstructive pulmonary disease (COPD), and asthma, leading to reduced emergency hospitalizations and lower overall healthcare costs. UNSW's endeavor with AusculPatch represents a vital step in shaping the future of wearable medical devices and personalized health management.

---

Source: <https://www.icthealth.org/news/smart-sensor-enables-continuous-heart-monitoring-at-home>

# #09 Aidian Reports New Evidence Supporting CRP POCT to Guide Antibiotic Use in Children, Reducing Prescriptions by 20-30%

Published June 30, 2026 Aidian フィンランド



## OVERVIEW

New findings from two large-scale randomized controlled trials (COORDINATE and ARON) demonstrate that C-reactive protein (CRP) Point-of-Care Testing (POCT) can safely and effectively guide antibiotic use in children with respiratory symptoms or acute illness. The studies, which evaluated thousands of pediatric patients, reported a significant 20-30% reduction in antibiotic prescriptions without compromising patient safety, marking a crucial advancement in global antibiotic stewardship efforts.

## IN DEPTH

### Background

The global rise of antibiotic resistance stands as one of the most critical public health threats of the 21st century, as designated by the World Health Organization (WHO). A significant accelerator of this crisis is the widespread and often unnecessary prescription of antibiotics. This issue is particularly acute in pediatric care, where antibiotics are frequently prescribed for viral infections, which do not respond to such treatments. To combat this, diagnostic innovators like Finnish company Aidian have been developing high-precision, rapid Point-of-Care Testing (POCT) solutions designed to guide more judicious antibiotic use.

## Key Findings

Finnish diagnostics company Aidian has reported robust new evidence from two large-scale randomized controlled trials (RCTs), COORDINATE and ARON (conducted in 2025), validating C-reactive protein (CRP) Point-of-Care Testing (POCT) as an effective tool for guiding antibiotic use in pediatric patients. These trials, involving thousands of children with respiratory symptoms or acute illnesses, were designed to compare antibiotic prescription rates, clinical outcomes, and safety profiles between cohorts managed with CRP POCT guidance versus those relying solely on conventional clinical judgment. The CRP POCT system allows clinicians to rapidly assess a patient's inflammatory status from a small blood sample within minutes during a consultation. A pivotal finding was an average reduction of 20-30% in antibiotic prescriptions when physicians utilized low CRP values to safely withhold treatment. Crucially, this reduction in antibiotic use did not lead to an increase in clinical deterioration or severe complications; conversely, some patients showed a tendency towards faster recovery, underscoring CRP POCT's role as a safe and effective complement to clinical decision-making and a vital strategy against global antibiotic overuse. This compelling evidence is poised to significantly shift the paradigm of antibiotic prescribing in pediatric healthcare, with widespread integration of CRP POCT promising to minimize unnecessary antibiotic exposure, safeguard children's health, and bolster efforts against the escalating antibiotic resistance crisis. Looking ahead, the evolution of POCT devices may involve the integration of additional biomarkers and AI algorithms, paving the way for even more precise identification of infectious agents and the development of personalized treatment strategies, thereby empowering healthcare professionals with faster, more confident diagnostic capabilities and contributing to solving a pressing global health imperative.

---

Source: <https://www.aidian.eu/news/new-evidence-supports-crp-poct-to-guide-antibiotic-use-in-children>

# #10 AI, Digital Health, & Remote Monitoring Revolutionize Obesity Care: Real-time Intervention via Wearables & Mobile Apps

Published June 29, 2026 AI in Digital Health & Remote Monitoring India



## OVERVIEW

Artificial Intelligence (AI), digital health platforms, and remote patient monitoring systems are rapidly transforming the healthcare industry's approach to obesity and metabolic disease management. Data-driven, patient-centric care models combining wearable technology, mobile health applications, and AI-powered analytics are enabling real-time health tracking and intervention. AI plays a central role in obesity management by facilitating predictive risk modeling for metabolic diseases, personalized nutrition and fitness recommendations, behavioral pattern recognition, and automated patient engagement via AI chat systems, leading to improved patient outcomes and quality of life.

## IN DEPTH

### Key Findings

Artificial Intelligence (AI), digital health platforms, and remote patient monitoring (RPM) systems are fundamentally transforming the delivery of care for obesity and metabolic diseases. These technologies are establishing data-driven, patient-centric care models by integrating wearable devices, mobile health applications, and AI-powered data analytics, thereby enabling real-time health tracking and timely interventions. Specifically, AI is playing a pivotal role in significantly enhancing the efficiency and effectiveness of obesity management through predictive risk modeling for metabolic diseases, personalized nutrition and fitness recommendations, recognition of behavioral patterns, and automated patient engagement via AI chat systems.

### Technical / Clinical Details

In this evolving care model, patients utilize wearable sensors such as smartwatches, smart scales, and continuous glucose monitoring (CGM) devices to continuously collect a variety of biometric data, including heart rate, activity levels, sleep patterns, weight, and blood glucose. This data is uploaded in real-time to secure digital health platforms and then analyzed by AI algorithms. The AI predicts the risk of developing obesity and related metabolic diseases (e.g., Type 2 diabetes, hypertension) based on individual patient data, genetic background, and lifestyle information. Furthermore, AI detects changes in patient behavior (e.g., shifts in dietary intake or exercise levels) and, based on this information, automatically generates personalized meal plans, exercise programs, and lifestyle improvement recommendations, delivering them directly to patients via mobile apps or AI chatbots. This system enables healthcare providers to efficiently manage more patients, while patients actively participate in their treatment utilizing their own health data.

## Background & Context

Obesity constitutes a severe global public health challenge, acting as a major risk factor for numerous chronic conditions such as Type 2 diabetes, cardiovascular diseases, and certain cancers. Traditional obesity treatment heavily relies on physician consultations and patient self-management, with a lack of sustained support and engagement often hindering treatment success. Advances in digital health and AI offer scalable and sustainable solutions to these challenges. Remote monitoring ensures that patients receive continuous support regardless of their location, and AI analyzes vast amounts of data to identify optimal interventions for individual patients. This technological integration is expected to optimize healthcare resources, improve patient outcomes, and ultimately reduce healthcare costs, accelerating the digital transformation across the entire healthcare industry.

## Strategic Significance & Outlook

The fusion of AI, digital health, and remote monitoring in obesity care is set to evolve further in the coming years. More sophisticated AI models will incorporate genetic data, microbiome data, and environmental factors to enable even more precise personalized medicine. Wearable sensors will continue to miniaturize and become more multifunctional, capable of non-invasively measuring a wider range of biomarkers. Additionally, immersive health coaching utilizing virtual reality (VR) and augmented reality (AR), along with gamified behavioral change programs, may be introduced to further enhance patient engagement. These advancements are expected to transform obesity and metabolic disease prevention, management, and treatment into more effective, accessible, and life-enhancing approaches for patients.

---

Source: <https://www.datamintelligence.com/news/ai-digital-health-remote-monitoring-obesity-care-2026>

Collected: July 03, 2026 | Automated Research System (Gemini API)

# #11 GoodRx Compares Leading CGMs: Dexcom G7 10-Day Sensor Emerges as Sole FDA-Approved Device for Children Ages 2+

Published July 01, 2026 GoodRx USA



## OVERVIEW

According to a GoodRx comparison report, the Dexcom G7 10-day sensor is FDA-approved for adults and children aged 2 and older, while the Dexcom G7 15-day sensor and Eversense 365 are approved exclusively for adults aged 18 and above. This grants the Dexcom G7 10-day sensor a clear advantage as the only available CGM system for children under 18 among these options. Furthermore, the Dexcom G7, being a skin-worn device, offers greater convenience for easy self-application at home compared to the implantable Eversense. This comparison provides crucial information for patients and healthcare providers in selecting the optimal CGM device.

## IN DEPTH

### Key Findings

A comparative analysis of continuous glucose monitoring (CGM) devices published by GoodRx highlights the distinct advantage of the Dexcom G7 10-day sensor. This device stands out as the only one among its competitors—the Dexcom G7 15-day sensor and Eversense 365—to receive FDA approval for use in children aged 2 years and older. The other two devices are restricted to adults aged 18 and above, effectively consolidating choices for pediatric patients to the Dexcom G7 10-day sensor. Furthermore, the Dexcom G7's non-invasive design, worn on the skin, allows for easy self-application at home, offering greater convenience compared to the implantable Eversense, which requires a surgical procedure.

### Technical / Clinical Details

The Dexcom G7 10-day sensor involves a small, wearable sensor placed on the skin, which continuously measures glucose concentrations in the interstitial fluid for up to 10 days. The measurement data is wirelessly transmitted to a smartphone or dedicated receiver, displaying real-time glucose trends and fluctuations. This system has received FDA approval for providing accurate and reliable glucose data, particularly in pediatric patients aged 2 and older, making it a vital tool for caregivers to more effectively manage their children's glucose levels. In contrast, the Eversense 365 is a sensor that can be implanted under the skin for up to 365 days, offering superior long-term monitoring but requiring medical professional intervention for implantation and removal. This distinction underscores the non-invasiveness and convenience of the Dexcom G7, particularly for pediatric patients and adults who prefer self-application.

## Background & Context

Continuous glucose monitoring has fundamentally transformed glucose management for individuals with diabetes, contributing to improved treatment outcomes by reducing the risks of hypoglycemia and hyperglycemia. However, device selection is heavily influenced by age restrictions, application methods, wear duration, and overall convenience. For pediatric diabetic patients, especially younger age groups, there is a high demand for non-invasive devices that minimize physical burden. The FDA approval of the Dexcom G7 for children addresses this critical need, marking a significant milestone in enhancing accessibility and acceptance within pediatric diabetes management. Healthcare professionals are therefore tasked with understanding the unique characteristics of each CGM device to guide patients toward optimal choices based on age, lifestyle, and treatment goals.

## Strategic Significance & Outlook

CGM technology is expected to continue evolving through further miniaturization, extended wear duration, and integration with artificial intelligence. The Dexcom G7's established leadership in the pediatric market will likely influence future product development and market strategies. Anticipated advancements include the approval of more CGM devices for pediatric use and the introduction of even less invasive technologies. Furthermore, enhanced data analytics and interoperability with other digital health tools will make patient diabetes management more personalized and efficient. These developments are poised to further improve the quality of life for individuals with diabetes and their families, while also contributing to a reduction in the incidence of diabetes-related complications globally.

---

Source: <https://www.goodrx.com/conditions/diabetes/dexcom-vs-everSense>

# #12 MDPI: Nanomaterial & AI-Enhanced Biosensors Modernize Asthma Diagnostics, Enabling Low-Concentration Detection of Salivary IL-8 and Other Biomarkers

Published July 02, 2026 MDPI Switzerland



## OVERVIEW

Biosensors enhanced by nanomaterials and artificial intelligence are driving the modernization of asthma diagnostics. Optical biosensors are gaining popularity due to their real-time, label-free detection capabilities and ease of miniaturization into POCT devices. Recently developed electrochemical biosensors, based on electrochemical biosensing principles, have demonstrated the ability to detect asthma-related biomarkers such as IL-8, IL-10, and IP-10 in saliva at low concentrations. This promises to improve early diagnosis, disease monitoring, and personalized treatment strategies for asthma.

### Key Findings

According to recent research, biosensors significantly enhanced by the integration of nanomaterials and artificial intelligence (AI) are rapidly modernizing the field of asthma diagnostics. Optical biosensors, in particular, are gaining prominence due to their capacity for real-time, label-free detection and their easy miniaturization into Point-of-Care Testing (POCT) devices. Furthermore, recently developed electrochemical biosensors have demonstrated a high-sensitivity capability to detect asthma-related biomarkers such as Interleukin-8 (IL-8), Interleukin-10 (IL-10), and IP-10 in saliva samples at previously challenging low concentrations. This breakthrough promises to enable earlier and more accurate diagnosis of asthma, contributing to the optimization of personalized treatment strategies tailored to individual patient pathologies.

### Technical / Clinical Details

Optical biosensors operate on the principle of detecting optical changes (e.g., refractive index, fluorescence, surface plasmon resonance) that occur from the interaction between biomolecules and the sensor surface. The incorporation of nanomaterials (e.g., nanoparticles, nanowires) dramatically boosts sensitivity and specificity by increasing the sensor's surface area, amplifying signals, and lowering detection limits. Electrochemical biosensors measure changes in current or potential generated by the redox reactions of biomarkers. Cytokines like IL-8, IL-10, and IP-10 in saliva are known indicators of airway inflammation, but their concentrations are typically very low, necessitating highly sensitive detection methods. The developed electrochemical sensors, by combining nanostructured electrodes with specific receptor molecules, have demonstrated the ability to detect these biomarkers at picogram/mL levels, achieving sensitivity comparable to or even surpassing traditional lab-based ELISA methods. AI algorithms further enhance diagnostic accuracy and clinical utility by analyzing complex data patterns collected from the sensors, reducing false positives, and building models to predict asthma severity and exacerbation risk.

## Background & Context

Asthma is a chronic respiratory disease affecting hundreds of millions worldwide, for which accurate diagnosis and effective management are crucial for improving patients' quality of life. However, current diagnostic methods (e.g., spirometry, symptom assessment) often suffer from subjectivity or difficulty in detecting early pathological changes. Biosensors enhanced by nanomaterials and AI aim to overcome these challenges, offering more objective, rapid, and non-invasive diagnostic tools. Their integration into POCT devices facilitates diagnosis at clinics or even patients' homes, improving healthcare access and shortening diagnostic turnaround times. This technological advancement drives personalized medicine for asthma, potentially reducing unnecessary treatments and minimizing drug side effects.

## Strategic Significance & Outlook

Nanomaterial and AI-enabled biosensors hold promise for application beyond asthma diagnostics, extending to the diagnosis and monitoring of other respiratory and allergic diseases. In the future, these sensors are expected to be integrated into wearable devices, allowing patients to continuously monitor their respiratory health status in their daily lives. This capability would enable early detection of symptom exacerbation and timely medical intervention, thereby preventing severe asthma attacks and reducing hospitalization rates. Furthermore, anonymized population health data analyzed by AI could help identify regional allergen triggers and optimize public health strategies, establishing new standards in asthma management and potentially transforming how respiratory health is monitored and treated globally.

---

Source: <https://www.mdpi.com/2624-845X/7/3/16>

# #13 Continuous Lactate Monitoring: The Next Breakthrough After CGM, Driven by Wearable Sensors and AI

Published July 01, 2026    After CGM (Diabetes in Control)    USA



## OVERVIEW

While Continuous Glucose Monitoring (CGM) revolutionized diabetes management, Continuous Lactate Monitoring (CLM) is now discussed as the next significant advance in metabolic monitoring. Lactate offers insights into the body's energy production and utilization during exercise, stress, illness, and recovery. Advances in wearable sensor technology and AI have enabled minimally invasive sensors to measure interstitial fluid lactate levels in real-time, emerging as a promising frontier for precision diabetes care and personalized metabolic medicine. This technology opens new possibilities for health and performance management.

### Key Findings

Just as Continuous Glucose Monitoring (CGM) revolutionized diabetes management, Continuous Lactate Monitoring (CLM) is now widely discussed in the healthcare industry as the next major breakthrough in metabolic monitoring. Lactate serves as a pivotal biomarker, offering invaluable insights into the body's energy production and utilization during physical exertion, stress, illness, and recovery phases. Driven by rapid advancements in wearable sensor technology and Artificial Intelligence (AI), minimally invasive sensors capable of real-time lactate level measurement in subcutaneous interstitial fluid have been developed. This technology is emerging as a promising frontier for precision diabetes care and personalized metabolic medicine, poised to unlock deeper understanding of individual metabolic states and optimize health and performance.

### Technical / Clinical Details

Current CLM sensors, similar to CGMs, consist of small, patch-like devices worn on the skin. These patches contain micro-needles or electrodes that penetrate the interstitial fluid, utilizing a lactate oxidase enzyme reaction to convert lactate concentrations into electrical signals. These signals are then transmitted wirelessly to a smartphone application, providing users with real-time visual confirmation of their lactate levels and trends. AI algorithms integrate the collected lactate data with other physiological parameters (e.g., heart rate, activity levels) to analyze the patient's metabolic profile. This enables precise evaluation of the impact of specific exercise intensities or dietary intake on lactate metabolism, and facilitates the early detection of excessive fatigue or metabolic anomalies. Clinically, while lactate levels have been used for prognosis in septic shock patients and for managing training loads in athletes, CLM offers non-invasive, continuous monitoring, enabling more rapid and personalized interventions.

## Background & Context

Monitoring metabolic function is gaining increasing importance not only for individuals with diabetes but also for athletes, fitness enthusiasts, and the general health-conscious population. Just as CGM provided real-time glucose data to enhance diabetes self-management, CLM introduces another critical metabolic indicator, adding a new layer of insight to health management. Conventional lactate measurement methods primarily require blood samples, which are invasive and intermittent, rendering them insufficient for capturing daily metabolic fluctuations. CLM technology overcomes these limitations by providing continuous metabolic information anytime, anywhere, thus potentially revolutionizing preventive medicine, personalized nutrition, and performance science. This technological advancement is expected to become a new killer application for wearable biosensors in the digital health market.

## Strategic Significance & Outlook

The future of continuous lactate monitoring will be shaped by further integration with AI. AI can interpret complex patterns derived from lactate data to provide real-time, optimized exercise programs, recovery strategies, and dietary advice tailored to individual users. In the future, CLM sensors are likely to evolve into multi-functional platforms capable of simultaneously measuring several other biomarkers (e.g., ketone bodies, electrolytes, cortisol), offering a more comprehensive metabolic profile. This will enable athletes to avoid overtraining and sustain peak performance, while the general population can gain insights useful for fatigue management, stress reduction, and chronic disease risk mitigation. CLM has the potential to redefine human health and wellness as a central technology for next-generation personal healthcare.

---

Source: <https://www.diabetesincontrol.com/continuous-lactate-monitoring-next-breakthrough/>

Collected: July 03, 2026 | Automated Research System (Gemini API)

# #14 MEDICA Highlights POCT's Critical Role in Emergency Departments: Rapid Diagnostics Enhance Clinical Decision-Making in Time-Sensitive Situations

Published July 02, 2026 MEDICA Germany



## OVERVIEW

MEDICA emphasized that Point-of-Care Testing (POCT) in emergency departments significantly supports clinical decision-making in time-constrained situations by providing rapid diagnostic data. POCT delivers critical test results within minutes, complementing triage, medical expertise, and central laboratory services to establish a more efficient treatment process. Its greatest strength lies in situations where quick clinical judgment is vital; it complements, rather than replaces, the diagnostic capabilities of central laboratories, potentially improving emergency patient care and outcomes.

### Key Findings

MEDICA, the leading German medical trade fair, has underscored the indispensable role of Point-of-Care Testing (POCT) in emergency departments (EDs) for robustly supporting clinical decision-making in time-sensitive, critical situations. POCT, by delivering vital diagnostic results within minutes directly at the patient's bedside, facilitates rapid triage, the application of medical expertise, and seamless integration with central laboratory services. This ultimately constructs a more efficient treatment pathway. The paramount value of POCT is realized in scenarios where swift clinical judgment is life-critical; it serves to complement, rather than supersede, the comprehensive diagnostic capabilities of central laboratories, thus enhancing the overall effectiveness of emergency care.

### Technical / Clinical Details

POCT devices utilized in emergency departments are designed to be compact, user-friendly, and capable of completing the entire testing process, from sample collection to result interpretation, within minutes. For instance, cardiac troponin T/I tests rapidly diagnose myocardial infarction in patients presenting with chest pain, guiding the need for urgent treatment. Blood gas analyzers evaluate oxygenation and acid-base balance in dyspneic patients, supporting immediate respiratory management. In infectious diseases, rapid antigen tests for influenza and COVID-19 enable patient isolation and early administration of antiviral medications. These POCT solutions eliminate the delays associated with sample transportation and batch processing in central laboratories, facilitating real-time decision-making. Consequently, patients receive more prompt diagnoses and treatments, directly correlating to improved prognoses, particularly for those in critical conditions.

## Background & Context

Emergency departments are intensely busy environments, demanding rapid and accurate diagnoses for a large and diverse patient population arriving simultaneously. Traditional laboratory processes, involving specimen transport, processing, and reporting in central labs, often resulted in significant delays, risking delayed treatment initiation, especially for highly urgent cases. POCT mitigates this bottleneck by enabling direct testing at the 'point of care'—be it the examination room, bedside, or even within an ambulance—thereby drastically reducing the time from diagnosis to treatment. This adoption streamlines healthcare professionals' workflows, enhances patient satisfaction, and contributes to the optimization of medical resources. Global pandemics have further amplified the criticality of POCT, reaffirming its indispensable role in emergency diagnostics.

## Strategic Significance & Outlook

The role of POCT in emergency departments is anticipated to expand and evolve significantly in the coming years. Future developments will likely include multifunctional POCT devices capable of detecting a wider array of biomarkers, as well as smart POCT systems integrated with Artificial Intelligence (AI). AI is expected to analyze complex test results and assist with clinical risk assessments, further enhancing diagnostic accuracy and speed. Moreover, integration with wearable technologies and telemedicine could enable real-time monitoring of patients' conditions even before their arrival at the ED, allowing for earlier interventions. This synergistic approach will dramatically improve the efficiency and effectiveness of emergency medical care, establishing a powerful foundation for saving lives and improving patient outcomes.

---

Source: <https://www.medica-tradefair.com/en/media-news/spheres-of-medica-magazine/lab-diagnostics/poct-emergency-department-triage>

# #15 RSC Publishing: Machine Learning-Augmented Lateral Flow Assays Dramatically Boost Sensitivity & Quantification in Infectious Disease POCT Diagnostics

Published June 30, 2026 Lab on a Chip (RSC Publishing) UK



## OVERVIEW

Lateral Flow Assays (LFAs) are widely used as Point-of-Care (PoC) diagnostic platforms for infectious diseases due to their rapid operation, low cost, and user-friendly design. However, conventional LFAs have been limited by analytical sensitivity, qualitative or semi-quantitative output, and subjective visual interpretation. Recent innovations in nanomaterial engineering, signal amplification strategies, and multiplex assay design have significantly improved detection performance, and AI and Machine Learning (ML)-based image analysis have emerged as transformative tools for digital LFA interpretation. This technological fusion elevates LFAs into more precise and quantitative diagnostic tools.

### Key Findings

New research published in 'Lab on a Chip' by RSC Publishing demonstrates that machine learning (ML)-augmented lateral flow assays (LFAs) are dramatically enhancing detection performance in point-of-care (PoC) infectious disease diagnostics. While LFAs are widely adopted for their speed, low cost, and ease of use, traditional systems have faced challenges with limited analytical sensitivity, qualitative or semi-quantitative outputs, and subjective visual interpretation of results. This study showcases how combining cutting-edge innovations in nanomaterial engineering, signal amplification strategies, and multiplex assay design with AI/ML-based image analysis can overcome these limitations, transforming LFAs into highly precise and quantitative diagnostic tools.

### Technical / Clinical Details

Conventional LFAs typically rely on visual interpretation of colored lines to determine positive/negative results, which can be imprecise, especially at low analyte concentrations. The proposed ML-LFA system significantly enhances detection sensitivity through signal amplification technologies using nanoparticles (e.g., gold nanoparticles, quantum dots). For example, reported improvements show detection limits for specific viral antigens reduced by hundreds to thousands of times compared to traditional methods. Furthermore, multiplex assay designs are incorporated, allowing simultaneous detection of multiple biomarkers on a single strip, thereby increasing diagnostic comprehensiveness. AI and ML algorithms analyze images of LFA strips captured by smartphones or dedicated readers, identifying subtle color changes and pattern differences that are imperceptible to the human eye. This image processing and pattern recognition enable accurate quantification of target molecule concentrations and reduce the risk of false positives and negatives, thereby dramatically improving diagnostic objectivity and reliability. Quantitative data is particularly critical for assessing disease progression and monitoring treatment efficacy in clinical settings.

## Background & Context

Rapid diagnosis of infectious diseases is crucial for pandemic preparedness, outbreak containment, and effective antibiotic stewardship programs. While traditional LFAs have been useful for initial screening, they were often insufficient for more complex diagnostics and disease management. The advent of ML-LFA technology improves diagnostic quality while expanding the scope of POCT applications. In resource-limited settings, this high-precision, affordable technology can contribute significantly to community health. It also helps alleviate the burden on central laboratories and reduces turnaround times from diagnosis to treatment, thus improving the efficiency of the entire healthcare system.

## Strategic Significance & Outlook

The convergence of machine learning and LFAs holds immense potential to reshape the future of infectious disease diagnostics. In the coming years, this technology is expected to be widely applied for rapid and highly accurate diagnosis of a broad spectrum of infectious diseases, including COVID-19, influenza, malaria, and dengue. Furthermore, there is an anticipation for its evolution into fully integrated telehealth diagnostic platforms, enabling patient self-diagnosis at home with AI automatically analyzing results and transmitting them to healthcare providers. This will enhance public health surveillance, facilitate earlier disease detection, and prompt intervention, thereby contributing significantly to improving global health outcomes.

---

Source: <https://pubs.rsc.org/en/content/articlelanding/2026/lc/d5lc01124h>

# #16 July 2026 Digital Health Trends: AI Wearable Patch Hits 99.6% Arrhythmia Detection, Clair Health Secures \$11.6M for Women's Health Wearable

Published July 02, 2026 Digital Health Trends (Openloop Health blog) USA



## OVERVIEW

June 2026 marked significant advancements in digital health. An AI wearable patch achieved 99.6% accuracy in detecting life-threatening arrhythmias, while Midjourney unveiled an underwater ultrasound scanner capable of 3D human body mapping in 60 seconds. Additionally, women's health startup Clair Health successfully raised \$11.6 million for the development of a wearable device combining 10 biosensors with AI voice biomarker analysis. These developments clearly demonstrate the rapid evolution of AI and wearable technology in healthcare.

## IN DEPTH

### Key Findings

June 2026 was a month of remarkable progress in the digital health sector. Of particular note is the emergence of an AI-powered wearable patch capable of detecting life-threatening arrhythmias with an astonishing 99.6% accuracy. Furthermore, Midjourney announced an underwater ultrasound scanner that can 3D-map the human body in just 60 seconds, opening new possibilities for diagnostic imaging. Separately, Clair Health, a startup dedicated to women's health, successfully secured \$11.6 million in funding for the development of an innovative wearable device that integrates 10 biosensors with AI voice biomarker analysis. These announcements collectively underscore the profound impact and rapid evolution of AI and wearable technologies in healthcare.

### Technical / Clinical Details

The AI wearable patch for arrhythmia detection is designed to be worn on the patient's chest, continuously monitoring electrocardiogram (ECG) signals. Embedded AI algorithms learn heart rhythm patterns and identify anomalies such as atrial fibrillation and ventricular tachycardia in real-time. The reported 99.6% detection accuracy is among the highest, even compared to existing medical-grade devices, and holds significant clinical importance, particularly for the early detection of asymptomatic arrhythmias. Midjourney's underwater ultrasound scanner employs sound waves to scan objects underwater, with AI rapidly processing the data to reconstruct high-resolution 3D images. This technology enables quick, non-invasive mapping of complex internal body structures in a short period, potentially serving as a faster and more cost-effective diagnostic tool compared to traditional MRI or CT scans. Clair Health's women's health wearable device incorporates an array of 10 biosensors that simultaneously measure various physiological data points, including body temperature, heart rate variability, sleep patterns, and activity levels. Moreover, the AI voice biomarker analysis is a pioneering approach that non-invasively assesses hormonal balance fluctuations and stress levels from vocal changes, contributing to personalized management of women-specific health issues such as menstrual cycles and menopausal symptoms.

## Background & Context

Digital health and wearable technologies are accelerating the shift towards patient-centric healthcare. As the demand for remote monitoring of chronic diseases, preventive medicine, and early diagnosis grows, AI plays an indispensable role in data analysis and providing personalized interventions. Arrhythmias, often referred to as 'silent killers,' directly link early detection to stroke prevention, making the accuracy of the AI patch a significant public health benefit. In the imaging sector, there is a clear need for faster and more accessible diagnostic tools, and Midjourney's scanner is anticipated to be utilized in operating rooms and emergency settings. Women's health has historically been an under-researched area, but startups like Clair Health are poised to revolutionize personalized care in this field by combining AI with multifunctional sensors. These technologies collectively contribute to improving healthcare efficiency, accessibility, and patients' quality of life.

## Strategic Significance & Outlook

The AI wearable patch is expected to expand its application beyond arrhythmia detection to monitor other cardiovascular and chronic diseases. Midjourney's ultrasound scanner has potential uses in diverse fields beyond medical diagnostics, including underwater exploration and industrial inspection. Clair Health's women's health wearable will likely evolve into a comprehensive platform supporting women's health throughout their lifespan, including optimizing hormonal balance, assisting with pregnancy, and managing menopausal symptoms. These technologies are likely to integrate, forming a more unified ecosystem for comprehensive personal health monitoring and management. Ultimately, they will contribute to building a future healthcare system where preventive medicine is paramount, and early intervention before disease onset becomes the standard of care.

---

Source: <https://openloophealth.com/blog/digital-health-trends-and-news-July-2026>

Collected: July 03, 2026 | Automated Research System (Gemini API)

# #17 China's POMDOCTOR Pivots to AI-Driven Predictive Healthcare Platform, Integrating Wearables & Data for Enhanced Chronic Disease Management

Published July 02, 2026 Stock Titan China



## OVERVIEW

China-based digital healthcare company POMDOCTOR announced a strategic pivot to an AI-driven predictive healthcare platform. The company plans to integrate wearable devices, artificial intelligence, physician resources, real-world healthcare data, and a healthcare payment network into a single intelligent ecosystem. This platform aims to support continuous monitoring, early risk identification, diagnosis, treatment, rehabilitation, and long-term chronic disease management. This bold strategic shift is poised to significantly enhance the company's competitiveness in China's digital healthcare market.

### Key Findings

POMDOCTOR, a China-based digital healthcare company, has announced a significant strategic shift, pivoting its business model towards an Artificial Intelligence (AI)-driven predictive healthcare platform. Central to this new strategy is the creation of a single, intelligent ecosystem that integrates wearable devices, AI technology, physician resources, real-world healthcare data, and a healthcare payment network. This comprehensive platform aims to provide holistic support for continuous patient health monitoring, early disease risk identification, diagnosis, treatment, rehabilitation, and long-term management of chronic diseases, holding the potential to revolutionize healthcare delivery in China.

### Technical / Clinical Details

The platform envisioned by POMDOCTOR will collect diverse biometric data—such as heart rate, activity levels, sleep patterns, blood pressure, and blood glucose—from wearable devices like smartwatches and patch sensors worn by patients daily. This data will be analyzed in real-time by cloud-based AI algorithms to identify anomalies in individual patient health statuses and detect trends indicating disease risk. The AI will combine this with historical medical records, genetic information, and lifestyle data to predict the likelihood of disease onset and propose personalized preventive interventions. For instance, for patients at high risk of cardiovascular disease, the AI can issue early warnings, offer advice on lifestyle improvements, or provide opportunities for online consultations with physicians. Furthermore, the platform will digitize processes like appointment booking, prescription management, and medical payment, enhancing convenience for both patients and healthcare providers. This ensures that patients with chronic conditions can receive continuous medical support from home, effectively managing disease progression.

## Background & Context

China faces substantial healthcare challenges, including a massive population, rapid aging, and a growing burden of chronic diseases, necessitating efficient and scalable healthcare solutions. Traditional healthcare systems have been hospital-centric, often lacking sufficient emphasis on prevention and long-term disease management. POMDOCTOR's strategic pivot addresses these national challenges by leveraging digital health and AI to improve healthcare accessibility, quality, and efficiency. The Chinese government is also actively investing in the digital health sector, promoting the construction of a 'smart health' ecosystem that utilizes wearable devices, AI, and big data. Such policy support further catalyzes POMDOCTOR's business development.

## Strategic Significance & Outlook

POMDOCTOR's AI-driven predictive healthcare platform is expected to exert significant influence within China's digital health market, with plans for future expansion into international markets. By focusing on early disease detection and prevention, this platform has the potential to reduce healthcare costs and improve public health outcomes. Future enhancements may include the addition of more biomarker monitoring capabilities and advanced integration with genomic data, further improving predictive accuracy and personalized care delivery. This strategy by POMDOCTOR illustrates the direction in which digital healthcare is evolving, moving beyond mere service provision to become a comprehensive ecosystem that fundamentally enhances people's health and quality of life.

---

Source: <https://www.stocktitan.net/sec-filings/POM/6-k-pomdoctor-ltd-current-report-foreign-issuer-8d5bab85098a.html>

# #18 Smartwatches Revolutionize Blood Sugar Management: Dexcom G7 and FreeStyle Libre Enhance Apple Watch Integration, Expanding AI-Driven Ecosystem

Published July 02, 2026 TechRepublic USA

**Smartwatches revolutionize blood sugar management: Dexcom G7 and FreeStyle Libre enhance Apple Watch integration, expanding an AI-driven ecosystem**



Published July 2, 2026, TechRepub

## OVERVIEW

Smartwatches hold the potential to transform glucose tracking, but current advancements rely on the integration of continuous glucose monitoring (CGM), artificial intelligence (AI), and regulated healthcare technologies. While mainstream smartwatches cannot independently measure blood sugar without external sensors, Dexcom's G7 now supports direct Apple Watch connection, and Abbott's FreeStyle Libre platform is expanding smartwatch support. This growing ecosystem of medical-grade sensors, smartphones, and smartwatches significantly enhances self-management for individuals with diabetes.

### Key Findings

Smartwatches are poised to revolutionize blood sugar tracking and management, though current technological advancements are largely dependent on tight integration with Continuous Glucose Monitoring (CGM) devices, Artificial Intelligence (AI), and rigorously regulated healthcare technologies. As of now, mainstream smartwatches on the market lack the capability to independently and non-invasively measure blood sugar without external, dedicated sensors. However, Dexcom's G7 has enhanced convenience by supporting direct connection with Apple Watch, and Abbott's FreeStyle Libre platform is also expanding its smartwatch compatibility. This synergistic development is rapidly fostering an ecosystem where medical-grade sensors, smartphones, and smartwatches collaboratively deliver more personalized and efficient diabetes management.

### Technical / Clinical Details

While current smartwatches can measure basic biometric data such as heart rate, activity levels, and sleep patterns, they require dedicated CGM sensors for blood glucose measurement. CGM sensors (e.g., Dexcom G7, FreeStyle Libre 3 Plus) are worn on the skin and continuously measure glucose concentrations in the interstitial fluid. This data is transmitted in real-time to a smartphone via wireless technologies like Bluetooth. Smartwatches then retrieve this glucose data from the smartphone app, enabling direct display on the wrist. This allows patients to check their glucose levels, understand trends, and monitor patterns anytime without needing to retrieve their smartphone. The direct connection between Dexcom G7 and Apple Watch further streamlines this process, allowing data to flow directly from the sensor to the Apple Watch without smartphone intermediation, offering enhanced convenience and faster information delivery. AI can combine CGM data with other biometric data collected by smartwatches (e.g., activity levels, sleep duration) to perform deeper analysis of glucose fluctuations, predict individual glucose responses to lifestyle and diet, and provide personalized health advice.

## Background & Context

Individuals with diabetes invest significant time and effort in daily glucose management, constantly needing to be aware of the risks of hypoglycemia and hyperglycemia. The integration of smartwatches and CGMs significantly alleviates this burden and substantially improves patients' quality of life. While research into non-invasive blood glucose measurement technologies is active, it is believed that achieving medical-grade accuracy and reliability will take more time. Therefore, the current trend focuses on linking highly accurate CGM sensors with smartwatches that excel in data display, analysis, and notification features. This collaboration elevates patient engagement and promotes more proactive self-management, shifting the paradigm of diabetes care. Technology giants like Apple and Google are also intensifying their involvement in the healthcare sector, and their platforms are likely to accelerate such integrations further.

## Strategic Significance & Outlook

The integration of smartwatches with blood glucose monitoring is expected to continue its evolution. In the future, advanced non-invasive glucose sensors may be directly embedded into smartwatches themselves, creating an even more seamless user experience. Furthermore, advancements in AI could enable the integration of glucose data with other biomarkers (e.g., ketone bodies, lactate, cortisol) to provide a comprehensive analysis of an individual's overall metabolic profile. This would empower not only diabetes patients but also healthy individuals to gain detailed insights into their metabolic status, which can be utilized for preventive healthcare and performance optimization. This technological innovation is expected to transform personal health management into a smarter, more integrated system, significantly contributing to the extension of healthy lifespans.

---

Source: <https://www.techrepublic.com/article/news-smartwatch-blood-sugar-revolution-explained/>

# #19 ACS Publications Unveils Multimodal Cell-Free Biosensing Platform for Highly Sensitive Detection of Lethal Mushroom Toxin $\alpha$ -Amanitin

Published June 25, 2026 ACS Publications USA



## OVERVIEW

This research developed a transcription-based multimodal cell-free biosensing platform for highly sensitive detection of  $\alpha$ -amanitin, a lethal mushroom toxin. The platform converts  $\alpha$ -amanitin-dependent RNA polymerase inhibition into a measurable output via three independent signal transduction modules: fluorescence, colorimetric (gold nanoparticle aggregation), and RNAzyme-catalyzed enzymatic detection. It demonstrated high detection limits (LOD) of 1.30  $\mu\text{g}/\text{mL}$  for fluorescence, 0.69  $\mu\text{g}/\text{mL}$  for AuNP-based colorimetry, and 6.29  $\mu\text{g}/\text{mL}$  for RNAzyme-based colorimetry, showing good selectivity and robust performance even in complex matrices. This technology significantly contributes to early food poisoning diagnosis and public health protection.

### Key Findings

Research published in ACS Publications describes the development of a transcription-based multimodal cell-free biosensing platform for the highly sensitive and versatile detection of  $\alpha$ -amanitin, a lethal mushroom toxin. This innovative platform leverages the specific mechanism of  $\alpha$ -amanitin inhibiting RNA polymerase, translating this inhibitory effect into measurable outputs via three independent signal transduction modules: fluorescence, colorimetric detection through gold nanoparticle aggregation, and enzymatic detection catalyzed by an RNAzyme. Notably, the AuNP-based colorimetric detection achieved a low limit of detection (LOD) of 0.69  $\mu\text{g/mL}$ , demonstrating excellent selectivity and robust performance even in complex sample matrices. This represents a significant advancement in the rapid and reliable detection of toxic substances.

### Technical / Clinical Details

The developed cell-free biosensing platform reconstructs the genetic transcription process in vitro. In the presence of  $\alpha$ -amanitin, RNA polymerase activity is inhibited, leading to a reduction in the amount of the target RNA transcript. This change in RNA quantity manifests as distinct signals across the three detection modules. The fluorescence detection module utilizes a fluorescent probe that binds to RNA, detecting a decrease in RNA quantity as a drop in fluorescence intensity. In the gold nanoparticle (AuNP)-based colorimetric detection, specific RNA sequences control AuNP aggregation; thus, a reduction in RNA due to  $\alpha$ -amanitin alters the AuNP aggregation state, resulting in a visually identifiable color change (e.g., red to blue). The RNAzyme-catalyzed enzymatic detection module relies on the catalytic activity of the RNAzyme, which is dependent on RNA quantity, so a decrease in RNA leads to a reduction in the colorimetric reaction intensity. While each module exhibits different LODs, their combined use enhances reliability and confirmability. This platform is particularly promising for applications requiring rapid and accurate results in toxicological emergencies and food safety testing.

## Background & Context

$\alpha$ -Amanitin is an extremely potent toxin found in certain mushrooms, such as the Death Cap, and its ingestion typically leads to severe liver failure, often with fatal outcomes. Early diagnosis of mushroom poisoning is critical for enabling appropriate therapeutic interventions and significantly improving patient prognosis. However, existing methods for  $\alpha$ -amanitin detection often require expensive equipment or lengthy analysis times. This cell-free biosensing platform overcomes these challenges by enabling rapid and low-cost detection directly at the point of need. The technology provides a new tool for food safety agencies and medical institutions to assess the risk of mushroom poisoning and protect public health.

## Strategic Significance & Outlook

This multimodal cell-free biosensing platform possesses versatility, allowing its application beyond  $\alpha$ -amanitin detection to other toxins, pathogens, or biomarkers. Future applications could include environmental monitoring of hazardous substances, rapid screening for allergens or contaminants in food, and even early diagnosis of infectious diseases in clinical settings. Further miniaturization and integration of this platform into portable devices could lead to the development of 'lab-on-a-chip' systems operable by users without specialized training. This will dramatically enhance on-site diagnostic capabilities across a wide range of fields, holding significant potential to contribute to a safer and healthier society.

---

Source: <https://pubs.acs.org/doi/10.1021/acs.analchem.6c01287>

# #20 MDPI: Nanoparticle-Based Biosensors Redefine Biomedical Diagnostics and Environmental Monitoring, Enhancing Pathogenic Nucleic Acid Detection Sensitivity

Published June 27, 2026 MDPI Switzerland



## OVERVIEW

According to an editorial in MDPI, nanoparticle-based biosensors are redefining the future of biomedical diagnostics and environmental monitoring. Diagnostic platforms leveraging nanoparticles have significantly enhanced the sensitivity and specificity of pathogenic nucleic acid detection. Biosensors are now integrated with microfluidic systems, cloud-based data analytics, and artificial intelligence, expanding their role in real-time disease surveillance and global public health monitoring. This technological convergence enables faster, more accurate diagnostics and opens new avenues for preventive medicine.

### Key Findings

As highlighted in an editorial published in MDPI, nanoparticle-based biosensor technology is fundamentally redefining its capabilities and application scope across both biomedical diagnostics and environmental monitoring. Diagnostic platforms ingeniously incorporating nanoparticles have successfully achieved groundbreaking improvements in the sensitivity and specificity of pathogenic nucleic acid detection. This advancement is further accelerated by the integration of biosensors with cutting-edge technologies such as microfluidic systems, cloud-based data analytics, and Artificial Intelligence (AI), thereby dramatically expanding their role in real-time disease surveillance and global public health monitoring.

### Technical / Clinical Details

Nanoparticles (e.g., gold nanoparticles, quantum dots, magnetic nanoparticles), owing to their unique physical and chemical properties (high surface-to-volume ratio, excellent optical and electrical characteristics, biocompatibility), dramatically enhance biosensor performance. In diagnostic platforms, these nanoparticles play a crucial role in amplifying detection signals and strengthening the binding to target pathogenic nucleic acids (DNA and RNA). For instance, sensors utilizing fluorescent quantum dots have achieved ultra-high sensitivity, capable of detecting even single pathogenic particles, yielding results comparable to or surpassing traditional molecular diagnostic methods like PCR. Integration with microfluidic systems (lab-on-a-chip) automates sample pre-processing, reaction, and detection within a single, miniature device, shortening analysis times and minimizing required sample volumes. Furthermore, cloud-based data analytics aggregates and processes sensor data collected globally, while AI algorithms perform pattern recognition and anomaly detection, enabling early identification of disease outbreaks and automatic alerts to public health authorities.

## Background & Context

Modern society faces complex challenges including the threat of emerging infectious diseases, environmental pollution, and the rising prevalence of chronic conditions. Addressing these issues necessitates rapid and accurate diagnostics, continuous monitoring, and interventions based on large-scale data analysis. Nanoparticle-based biosensors offer powerful solutions to these needs. Traditional diagnostic methods are often time-consuming, costly, and require specialized equipment and personnel, making them difficult to access in resource-limited regions. This new technology enables portable and user-friendly devices, promoting the democratization of diagnostics. From a public health perspective, real-time epidemiological data collection and analysis assist in disease spread modeling and the formulation of effective intervention strategies, strengthening preparedness for future pandemics.

## Strategic Significance & Outlook

Nanoparticle-based biosensors are expected to become even more multifunctional and intelligent in the coming years. Future developments anticipate the emergence of multiplexed sensors capable of simultaneously detecting multiple biomarkers, wearable devices that non-invasively acquire data from bodily fluids (e.g., sweat, tears, saliva), and self-diagnostic systems integrated with AI. In environmental monitoring, sensors capable of real-time detection of trace pollutants in soil and water will be developed, contributing to environmental protection and resource management. In the biomedical field, these advancements will accelerate personalized medicine, enabling precise diagnosis and treatment tailored to individual genetic backgrounds and lifestyles. This technological revolution is poised to expand the frontiers of medicine and environmental science, laying an indispensable foundation for a healthier and more sustainable society.

---

Source: [https://www.researchgate.net/publication/407212328\\_Editorial\\_for\\_Nanoparticle-Based\\_BioSensors\\_for\\_Biomedical\\_and\\_Environmental\\_Monitoring](https://www.researchgate.net/publication/407212328_Editorial_for_Nanoparticle-Based_BioSensors_for_Biomedical_and_Environmental_Monitoring)

# #21 ACS Applied Nano Materials Reviews Single-Atom Nanozymes: Drastically Improving Sensitivity and Specificity for Biomolecule and Pollutant Detection

Published June 26, 2026 ACS Applied Nano Materials USA

A review of single-atom Nanozymes published in ACS Nano Materials:

Breakthroughs in sensitivity and specificity for biomolecule and pollutant detection

Published Jun, 2026

## OVERVIEW

Single-atom nanozymes (SAzymes) significantly reduce detection limits (LOD) and improve detection sensitivity and specificity due to their highly efficient substrate catalysis. These properties position SAzymes as low-cost, high-performance sensing tools driving technological innovation in areas such as environmental monitoring and food safety. Their easy integration into portable devices, such as smartphones, facilitates rapid on-site detection. This review emphasizes SAzymes as a crucial component shaping the future of biosensing.

### Key Findings

According to a review article published in ACS Applied Nano Materials, single-atom nanozymes (SAzymes) have been identified as dramatically reducing limits of detection (LOD) and significantly enhancing detection sensitivity and specificity compared to conventional analytical techniques, attributed to their exceptional substrate reaction catalysis. SAzymes, by combining the unique physical properties of nanomaterials with enzyme-like catalytic activity, are emerging as low-cost, high-performance sensing tools that are powerfully driving technological innovation across diverse fields such as environmental monitoring, food safety, and biomedical diagnostics. Their facile integration with portable devices, including smartphones, is particularly noteworthy, enabling rapid and highly accurate on-site detection and paving the way for broad applications.

### Technical / Clinical Details

SAzymes possess a structure where single metal atoms (e.g., Fe, Co, Pt) are uniformly dispersed and anchored onto nanoscale support materials (e.g., graphene, metal oxides). These single-atom sites ensure maximum catalytic activity, reacting with specific biomolecules or chemical substances with enzyme-like efficiency. For example, in the detection of hydrogen peroxide (H<sub>2</sub>O<sub>2</sub>), SAzymes exhibit peroxidase-like activity, enabling the detection of H<sub>2</sub>O<sub>2</sub> concentrations at nanomolar levels through colorimetric reactions. This ultra-high sensitivity represents a significant improvement over traditional nanozymes and natural enzymes, making them extremely effective for detecting trace biomarkers and pollutants. Furthermore, SAzymes demonstrate high stability across a broad range of pH and temperatures, and possess excellent shelf-life, making them suitable for field use and long-term monitoring. Their integration into portable devices means SAzyme-incorporated sensing platforms can be designed for instant, high-precision detection of specific biomarkers (e.g., glucose in diabetic patients, specific pathogen DNA, or allergens in food).

## Background & Context

Highly sensitive and specific detection technologies are indispensable for public health, environmental protection, and ensuring food supply safety. However, existing high-performance analytical methods often require expensive, complex instrumentation and specialized operation. The advent of SAzymes fills this gap, offering more accessible and cost-effective solutions. SAzymes hold potential for addressing a wide range of challenges, including rapid detection of antibiotic-resistant bacteria, screening for harmful additives in food, and monitoring water pollutants. This technology is expected to play a critical role in enhancing diagnostic and monitoring capabilities, particularly in developing countries and remote areas.

## Strategic Significance & Outlook

While research into single-atom nanozymes is still a relatively young field, their application potential is vast. In the future, SAzymes are likely to be integrated into multiplexed sensing platforms, enabling the simultaneous detection of multiple targets. Furthermore, their fusion with AI could allow SAzyme-based sensors to analyze vast amounts of collected data for more complex diagnoses and predictive analytics. The incorporation into wearable biosensors also offers the potential for continuous monitoring of individual health status, contributing to early disease detection and prevention. As one of the key pillars of next-generation biosensing technology, SAzymes are expected to exert a significant impact on science and society through their innovative capabilities.

---

Source: <https://pubs.acs.org/doi/10.1021/acsnm.6c01129>

# #22 DLG Report Details Nanosensor Innovation in Food Industry: FluDect for Real-time Quality Monitoring, Oxford Nanopore for Pathogen ID

Published June 29, 2026 DLG-Expert report Germany



## OVERVIEW

According to a DLG expert report, nanosensors significantly enhance accuracy, sensitivity, and speed in food testing by detecting, quantifying, and monitoring chemical, physical, or biological parameters with high sensitivity and resolution. FluDect technology involves the development of industrial optical biosensors designed for continuous, real-time, in-line liquid monitoring, where functionalized microparticles ( $\mu$ Beads) sensitively bind microorganisms and proteins at the molecular or nanoscale. Oxford Nanopore Technologies applies electrochemical nanosensing, with nanopores acting as sensing elements, for analyzing pathogens, fermentation processes, spoilage, and process contamination in food. These innovations are shaping the future of food safety and quality control.

### Key Findings

The DLG (German Agricultural Society) expert report, 'Nanosensors in the Food Industry (05/2026),' details how nanosensors are fundamentally transforming inspection and quality control within the food industry. These advanced sensors possess the remarkable ability to detect, quantify, and monitor chemical, physical, and biological parameters with high sensitivity and resolution, thereby dramatically enhancing the accuracy, sensitivity, and speed of food testing. Notably, FluiDect technology is advancing the development of industrial optical biosensors specifically designed for continuous, real-time, in-line liquid monitoring. These systems utilize functionalized microparticles ( $\mu$ Beads) that sensitively bind microorganisms and proteins at the molecular or nanoscale. Concurrently, Oxford Nanopore Technologies is revolutionizing pathogen identification, fermentation process monitoring, and the analysis of spoilage and process contamination in food through its application of electrochemical nanosensing, where nanopores serve as the sensing elements.

### Technical / Clinical Details

The industrial optical biosensors employed in FluiDect technology leverage optical principles such as Surface Plasmon Resonance (SPR) or Total Internal Reflection Fluorescence (TIRF) to detect optical changes occurring when specific target molecules in a liquid sample bind to the sensor surface. The functionalized  $\mu$ Beads are surface-modified with receptors (e.g., antibodies or aptamers) designed to specifically bind to target molecules, enabling highly sensitive capture and detection of even extremely low concentrations of microorganisms (e.g., Salmonella, Listeria) or proteins (e.g., allergens). This system can be integrated directly into manufacturing lines, allowing for real-time monitoring of food safety, facilitating early detection of contamination, and enabling swift responses. Meanwhile, Oxford Nanopore Technologies' nanopore sequencing technology directly reads molecular sequences by detecting changes in electrical signals as DNA or RNA molecules pass through nanoscale pores (nanopores). This enables rapid and accurate identification of bacterial and viral genes in food samples and is applied to pathogen identification in foodborne illnesses and microbial community analysis in fermented foods. This technology is expected to see widespread adoption as it enables on-site testing with portable devices, eliminating the need for expensive laboratory equipment.

## Background & Context

Food safety is a paramount concern for consumers and regulatory bodies worldwide. The increasing complexity and globalization of food supply chains have amplified the risks of food contamination, necessitating faster and more reliable testing technologies than ever before. Traditional food testing methods are often time-consuming, labor-intensive, and culture-based tests can take several days for results. Nanosensor technology offers a superior solution to these challenges, providing speed, high sensitivity, and on-site applicability. This empowers food manufacturers to assure product quality and safety, reducing the risk of recalls and foodborne illnesses. Moreover, it contributes to sustainable food production by enabling efficient monitoring of fermentation processes and water resources.

## Strategic Significance & Outlook

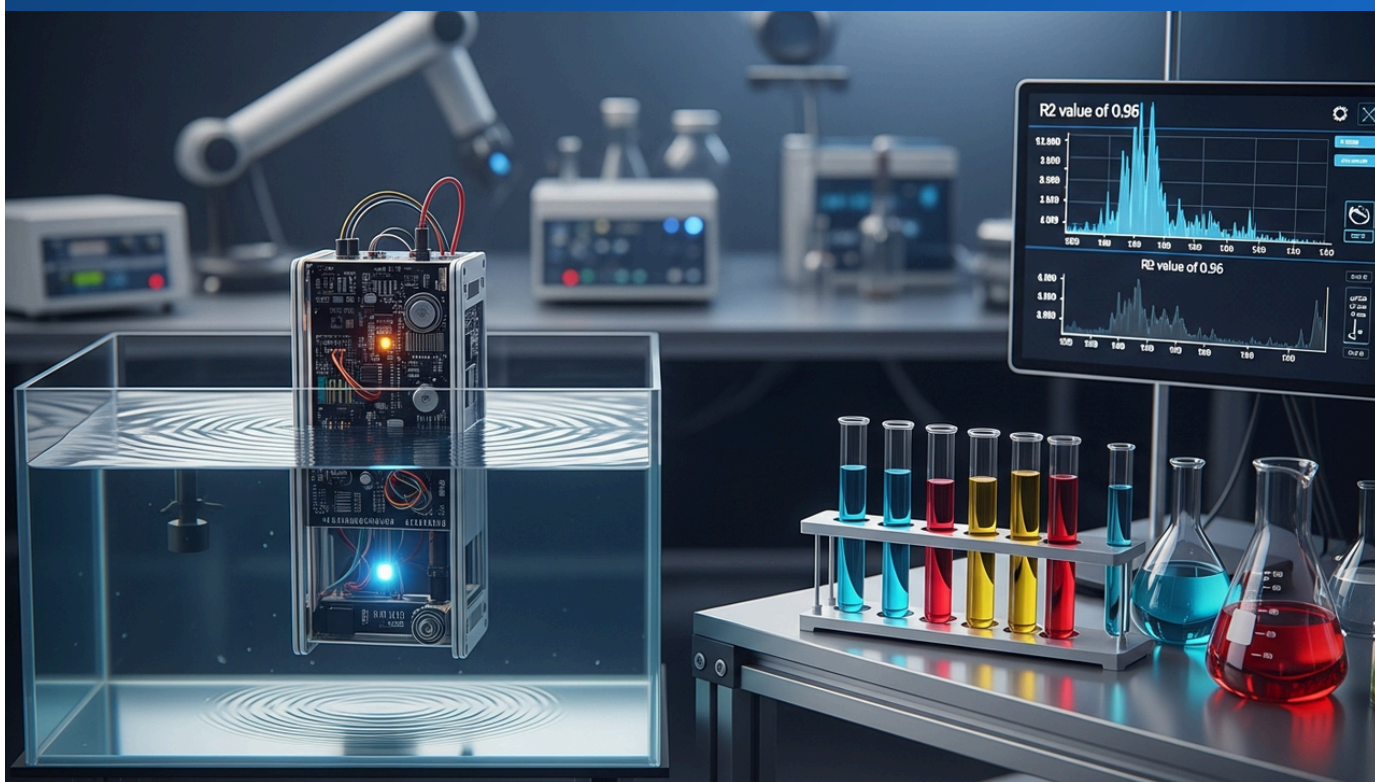
The application of nanosensors in the food industry is poised for further expansion and diversification. In the future, these sensors may be integrated into food packaging to provide real-time information to consumers about product freshness and safety, manifesting as 'smart packaging' technology. Through integration with AI, systems will evolve to analyze vast amounts of data collected by nanosensors, enhancing risk assessment and traceability across the entire food supply chain. This will not only improve food safety but also contribute to reducing food waste. Nanosensors are set to become indispensable tools for building a safer, more transparent, and sustainable food system, steadily increasing their influence.

---

Source: <https://www.dlg.org/en/mediacenter/dlg-expert-reports/food-sensory-technology/dlg-expert-report-05-2026-nanosensors-in-the-food-industry>

# #23 ACS Publications Announces Low-Cost, Open-Source In Situ Near-Real-Time Sensor for Nitrate & Ammonia in Environmental Waters: Achieves R2 of 0.96 with Over 400 Stable Responses

Published June 28, 2026 ACS Publications USA



## OVERVIEW

This research developed a low-cost, open-source, in situ, near-real-time sensor for detecting nitrate and ammonia in environmental waters. The colorimetric sensor achieved near-perfect accuracy with an R2 value of 0.96 for both nitrate and ammonia, demonstrating reliable performance even in environmental samples. A stable ammonia response was confirmed over 400+ laboratory and field measurement cycles, highlighting its potential as a portable environmental monitoring system. This innovation opens new avenues for monitoring and managing water pollution.

### Key Findings

New research published in ACS Publications details the development of a low-cost, open-source, in situ, near-real-time sensor for detecting nitrate and ammonia in environmental waters. This colorimetric sensor achieved near-perfect accuracy, with an  $R^2$  value of 0.96 for both nitrate and ammonia, and demonstrated highly reliable performance in real-world environmental samples. Notably, the sensor maintained a stable ammonia response over more than 400 laboratory and field measurement cycles, unequivocally demonstrating its robustness and long-term utility. This groundbreaking technology is poised to establish new benchmarks for monitoring and managing water pollution.

### Technical / Clinical Details

The developed sensor utilizes a colorimetric method, optically detecting color changes that occur when target ions (nitrate and ammonia) react with specific reagents. The sensor's design is straightforward, composed of 3D-printable components and commercially available, inexpensive electronic parts, which significantly keeps the overall manufacturing cost low. For nitrate detection, a diazotization-coupling reaction employing cadmium reduction is used, while Nessler's reagent is employed for ammonia detection. The sensor integrates microfluidic channels and an optical detector to automate sampling, reagent injection, mixing, and colorimetric analysis. The high coefficient of determination ( $R^2 = 0.96$ ) indicates an extremely strong correlation between the sensor's measurements and reference laboratory analytical methods (e.g., ion chromatography, ammonia electrode methods). The confirmation of over 400 stable ammonia responses suggests the sensor's resistance to reagent degradation and reliability in repeated use, confirming its suitability for continuous monitoring with low maintenance frequency.

## Background & Context

Nitrate and ammonia in water are major pollutants stemming from agricultural runoff, industrial wastewater, and untreated urban sewage. Excessive concentrations can lead to eutrophication, severely impacting ecosystems, and nitrates in drinking water can pose adverse health effects to humans. Monitoring these pollutants is essential for environmental protection and public health, yet conventional laboratory-based analyses are often time-consuming, costly, and hinder real-time data acquisition. This low-cost, open-source, in situ sensor addresses these challenges, empowering local governments, environmental protection agencies, and researchers to monitor water quality more efficiently and frequently. Its open-source nature offers a significant advantage, allowing researchers and developers worldwide to improve the design and customize it for specific regional needs.

## Strategic Significance & Outlook

This sensor technology holds immense potential to transform the future of environmental monitoring. In the future, the platform could be expanded to simultaneously detect other water quality pollutants, such as phosphates, heavy metals, and specific pesticides. Furthermore, integration with IoT (Internet of Things) technology could enable the creation of sensor networks, aggregating and analyzing water quality data from extensive water bodies (rivers, lakes, groundwater) in the cloud. This will facilitate the identification of pollution sources, tracing of pollution pathways, and prompt implementation of effective mitigation measures. This low-cost, high-reliability sensor is particularly expected to enhance water resource management capabilities in developing countries, significantly contributing to improved access to safe drinking water and the protection of aquatic ecosystems globally.

---

Source: <https://pubs.acs.org/doi/10.1021/acsestwater.6c00349>

# #24 DexCom Expands Stelo Glucose Biosensor to Non-Insulin-Using Children, Launches Redesigned App in US July 2026

Published June 30, 2026   WealthMagik (via Earnings Stability Report)   USA



## OVERVIEW

DexCom announced FDA approval to expand the Stelo Glucose Biosensor to non-insulin-using children aged 2 and older, aligning with the company's mission to make glucose sensing more accessible. Furthermore, DexCom revealed a redesigned Stelo app, set for US release in July 2026, aiming to offer clearer insights into glucose patterns related to diet, activity, sleep, and stress. This dual advancement represents a significant step forward in diabetes management and general metabolic health monitoring.

## IN DEPTH

### Key Findings

DexCom has announced that it received FDA (U.S. Food and Drug Administration) approval to expand the indication for its Stelo Glucose Biosensor to include non-insulin-using children aged 2 years and older. This approval aligns perfectly with the company's strategic mission to make glucose sensing technology accessible to a broader population. In conjunction with this expansion, DexCom also unveiled a redesigned mobile application for Stelo, which is slated for release in the U.S. in July 2026. This new app aims to provide detailed and easily understandable insights, helping users more clearly comprehend the relationship between daily factors such as diet, activity, sleep, and stress, and their glucose patterns.

### Technical / Clinical Details

The Stelo Glucose Biosensor system comprises a small, disposable patch-like sensor worn on the skin, which continuously measures glucose concentrations in the interstitial fluid beneath. This sensor wirelessly transmits data every few minutes to a compatible smartphone application, displaying real-time glucose values and trends. The recent FDA approval specifically targets non-insulin-using children aged 2 and above, signifying that Stelo's safety and efficacy have been clinically confirmed for this demographic. The redesigned app, beyond traditional numerical displays, incorporates rich graphs and visual indicators to make glucose fluctuation patterns intuitively understandable. For instance, it will present the magnitude of glucose spikes after specific meals, the impact of exercise on glucose levels, and the correlation between sleep deprivation and glucose control in a user-friendly format. This empowers users to gain a deeper understanding of how their lifestyle influences their glucose levels, facilitating more proactive self-management.

## Background & Context

Continuous Glucose Monitoring (CGM) has primarily been prescribed for insulin-dependent individuals with diabetes. However, expanding its application to non-insulin-using children marks a significant turning point for the CGM market. This aligns with the broader healthcare trend emphasizing preventive medicine and early intervention. Amidst rising concerns over childhood obesity and the increasing risk of Type 2 diabetes, accessible CGM solutions like Stelo offer a powerful tool for children to establish healthy lifestyle habits early and mitigate future disease risks. The app's refresh aims to enhance the value of digital health solutions by providing practical insights rather than merely presenting data. This move indicates a shift towards more consumer-friendly evolution in medical devices and will serve as a benchmark for new product development and market strategies for competitors.

## Strategic Significance & Outlook

DexCom's expansion of Stelo's target population and app redesign illustrate that CGM technology is poised to become a core component of personalized and proactive healthcare. In the future, further integration with AI will likely enhance features that analyze individual user data, generate glucose predictions, and automate customized diet and exercise plans. Accelerated international expansion is also anticipated, extending the benefits of CGM to a greater number of non-insulin users globally, particularly children and health-conscious general consumers. This technological innovation holds substantial potential to alleviate the burden of diabetes management and contribute significantly to disease prevention, early detection, and the achievement of better health outcomes.

---

Source: <https://www.wealthmagik.com/expert-time/DexCom-Expands-Stelo-Glucose-Biosensor-to-Children-Broadening-NonInsulin-Users-Access-40-4345>

# #25 QuidelOrtho Report: Ultra-Rapid Molecular Diagnostics Reshape Clinical Labs, Cutting Respiratory Virus TAT from >26 Hours to <3 Hours

Published June 30, 2026    How Ultra-Rapid Molecular Diagnostics (QuidelOrtho)    USA



## OVERVIEW

Ultra-rapid molecular diagnostics are reshaping clinical laboratories, with Point-of-Care (POC) molecular testing significantly impacting urgent and emergency care settings. Rapid molecular tests for respiratory viruses have reduced turnaround times (TAT) from over 26 hours to under 3 hours, shown to decrease hospital admissions and support faster diagnosis, decision-making, and timely treatment within a single patient visit. New POC molecular testing modes also eliminate several workflow steps, resolving delays caused by central lab batch processing, leading to significantly improved patient outcomes.

### Key Findings

According to a report by QuidelOrtho, ultra-rapid molecular diagnostics are fundamentally transforming clinical laboratory operations, with Point-of-Care (POC) molecular testing exerting a profound clinical impact, particularly in urgent and emergency care settings. The implementation of rapid molecular tests for respiratory virus infections has dramatically reduced the turnaround time (TAT) for test results from over 26 hours to less than 3 hours. This accelerated TAT has been demonstrated to lead to decreased hospital admissions, quicker diagnoses and decision-making within a single patient visit, and more timely therapeutic interventions. Furthermore, novel POC molecular testing modalities eliminate several conventional workflow steps, resolving delays historically caused by batch processing in central laboratories, thereby significantly enhancing the overall efficiency of the diagnostic process.

### Technical / Clinical Details

Ultra-rapid molecular diagnostic systems integrate nucleic acid amplification technologies, such as real-time PCR or LAMP (Loop-mediated Isothermal Amplification), into compact, automated devices. These devices allow for direct loading of specimens (e.g., nasopharyngeal swabs) and enable highly sensitive and specific pathogen detection within minutes to tens of minutes. For instance, simultaneous detection of respiratory syncytial virus (RSV), influenza viruses, and COVID-19 virus can be performed while the patient is still in the consultation room. Clinically, this reduction in TAT directly facilitates prompt implementation of appropriate isolation measures, early administration of antibiotics or antivirals, and avoidance of unnecessary tests or hospitalizations. One study reported that the introduction of respiratory virus POC testing led to a reduction of over 10% in unnecessary hospital admissions for pediatric patients. Eliminating the need for specimen transport to central laboratories also reduces the risks of specimen misidentification or degradation.

## Background & Context

Clinical laboratories are constantly challenged to balance efficiency with accuracy, but in urgent situations, speed is paramount to patient outcomes. While traditional molecular diagnostics are highly accurate, they often require complex equipment, specialized technicians, and lengthy processing times, thus limiting their utility in emergency settings. The emergence of ultra-rapid molecular diagnostics bridges this gap, significantly improving speed and accessibility while maintaining diagnostic quality. This technology has proven its value in responding to infectious disease pandemics, becoming an indispensable component for protecting public health and strengthening the resilience of healthcare systems. Its significance is immeasurable in severe infectious diseases where the time from diagnosis directly impacts treatment success.

## Strategic Significance & Outlook

Ultra-rapid molecular diagnostic technology is poised for further evolution and broadening application. In the future, POC diagnosis is expected to extend beyond respiratory viruses to a wider range of infectious diseases, including sepsis, urinary tract infections, and antibiotic-resistant bacteria. Integration with Artificial Intelligence (AI) may lead to the development of smart diagnostic systems that analyze complex test data to predict not only pathogen identification but also their pathogenicity and antimicrobial resistance profiles in real-time. Furthermore, the proliferation of smaller, more portable devices to clinics, pharmacies, and even patients' homes will advance the 'ubiquitization' of diagnostics, significantly contributing to the realization of preventive and personalized medicine. This technology is expected to be a powerful driver in reshaping healthcare delivery and accelerating patient-centered care.

---

Source: <https://www.quidelortho.com/global/en/resources/articles/how-ultra-rapid-molecular-diagnostics-are-reshaping-the-clinical-laboratory>

# #26 University of Twente Announces Biosensor Chip for Highly Sensitive Cervical Cancer Detection via Urine Samples: Aims to Replace Smear Tests within 5-10 Years

Published July 01, 2026   University of Twente   Netherlands



## OVERVIEW

Professor Loes Segerink at the University of Twente is developing a biosensor chip for easier cervical cancer detection. This technology aims to replace traditional smear tests within 5–10 years by detecting DNA traces of cervical cancer in urine samples. The chip may become part of the Mykee sample-to-answer platform, being co-developed with Micronit, a university spin-off. This non-invasive diagnostic method is a groundbreaking advancement poised to reduce patient burden and improve early detection rates.

### Key Findings

A research team led by Professor Loes Segerink at the University of Twente in the Netherlands is advancing the development of an innovative biosensor chip capable of highly sensitive detection of cervical cancer DNA traces from urine samples. This technology aims to replace the current primary cervical cancer screening method, the Pap test (smear test), with a simpler and non-invasive alternative, targeting commercialization within the next five to ten years. The biosensor chip is slated to be a critical component of Mykee, an integrated sample-to-answer diagnostic platform being co-developed with Micronit, a university spin-off. This advancement holds the potential to significantly reduce patient burden and enhance early detection rates for cervical cancer.

### Technical / Clinical Details

The biosensor chip under development is designed to detect human papillomavirus (HPV) DNA specific to cervical cancer, as well as specific mutated DNA released from cancerous cells, which are present in urine. The chip's surface is functionalized with probes that specifically bind to target DNA sequences, detecting changes in electrical or optical signals upon DNA binding. This assay is engineered for ultra-high sensitivity, capable of detecting even extremely low concentrations of DNA accurately, thereby capturing minute DNA fragments. This could enable the early identification of very early-stage cancers or pre-cancerous lesions. The Mykee platform integrates a series of processes, from automated urine sample pre-treatment to DNA extraction and amplification on the chip, followed by detection and result display. This enables 'one-button' diagnostics operable by individuals without specialized technical training. Such automation and miniaturization make its use practical in clinics and homes, significantly improving screening accessibility and participation rates.

## Background & Context

Cervical cancer, primarily caused by HPV infection, is curable with early detection and appropriate treatment. However, smear tests are invasive and uncomfortable, leading many women to hesitate in undergoing regular screenings. This often results in delayed cancer detection and poorer prognoses. Professor Segerink's biosensor chip aims to reduce this reluctance to testing by enabling non-invasive urine tests, thereby increasing screening uptake. This represents a groundbreaking solution to a major public health challenge and holds potential to contribute to the World Health Organization's goal of global cervical cancer elimination. This technology will be an indispensable element in the advancement of personalized and preventive medicine.

## Strategic Significance & Outlook

The commercialization of this biosensor chip will dramatically transform cervical cancer screening. In the future, the Mykee platform holds the potential to be applied to the early detection of other urological cancers, such as bladder and prostate cancer, beyond cervical cancer. Furthermore, it is expected to evolve into a system that allows easy home testing, with results shared with physicians via smartphones. Integration with AI algorithms could enable the system to combine multiple biomarkers for more accurate cancer risk prediction and to provide personalized follow-up plans, evolving into smart diagnostics. This non-invasive and highly sensitive diagnostic technology is anticipated to significantly contribute to improving patient prognoses through early cancer detection and reducing the overall burden on healthcare systems.

---

Source: <https://www.utwente.nl/en/news/2026/7/986931/biosensor-chip-detects-cervical-cancer-more-easily>

# #27 ProPharma FAQ: POCT & Diagnostic Miniaturization Reshape IVD Future, Driven by Wearables & AI

Published June 25, 2026 ProPharma USA



## OVERVIEW

Point-of-care testing (POCT) and diagnostic miniaturization are rapidly reshaping the future of in vitro diagnostics (IVDs). Miniaturized instrument hardware, improved sensor technology, and portable diagnostic tools (including smartphone-based devices and companion apps) are expanding the scope of POCT, with wearable technology providing more targeted, personalized care. Diagnostic miniaturization has been enabled by the incorporation of new technologies such as microfluidics, lab-on-a-chip (LOC), nanotechnology, and artificial intelligence smart systems. This enhances healthcare access and promotes patient-centric care.

### Key Findings

As highlighted in ProPharma's FAQ article, Point-of-Care Testing (POCT) and diagnostic miniaturization are rapidly reshaping the future of the In Vitro Diagnostics (IVD) industry. The dramatic reduction in instrument hardware size, continuous improvements in sensor technology, and the proliferation of portable diagnostic tools (including smartphone-based devices and companion applications) have exponentially expanded the scope of POCT. Consequently, wearable technology is now able to deliver more targeted and personalized care tailored to each patient's individual needs. This trend of diagnostic miniaturization has been made possible through the integration of innovative technologies such as microfluidics, Lab-on-a-Chip (LOC), nanotechnology, and Artificial Intelligence (AI)-powered smart systems.

### Technical / Clinical Details

POCT enables direct diagnosis at the patient's point of care without waiting for central laboratory analysis. Examples include blood glucose meters, pregnancy test kits, and rapid influenza diagnostic kits. Diagnostic miniaturization signifies the evolution of these devices to become smaller and capable of performing more complex analyses. Microfluidics manipulates liquid samples within extremely small channels, minimizing reagent consumption while enhancing reaction speed and efficiency. Lab-on-a-Chip (LOC) technology integrates multiple laboratory functions onto a single microchip, enabling fully automated, rapid diagnostics. Nanotechnology dramatically improves sensor sensitivity and specificity, allowing for the detection of trace biomarkers. AI smart systems analyze vast amounts of data collected from sensors, providing early disease detection, risk prediction, and personalized treatment recommendations, thereby further increasing diagnostic accuracy and clinical utility. Wearable devices, through continuous biometric data monitoring, track health status in real-time and prompt early intervention in case of anomalies, significantly bolstering chronic disease management and preventive medicine.

## Background & Context

Global healthcare systems face challenges such as aging populations, increasing chronic diseases, and escalating healthcare costs, demanding more efficient and accessible diagnostic solutions. Traditional lab-based diagnostics, while accurate, are time-consuming and costly, and often difficult to access, especially in remote or resource-limited regions. POCT and diagnostic miniaturization bridge this gap, allowing patients to receive rapid diagnoses at home or in clinics, thereby reducing healthcare disparities. The experience of pandemics underscored the critical importance of rapid diagnostics and screening, further accelerating the urgency of these technological innovations. These technologies are indispensable components for driving patient-centric healthcare models, streamlining healthcare professional workflows, and improving the overall resilience of healthcare systems.

## Strategic Significance & Outlook

The future of IVD will be further transformed by POCT and diagnostic miniaturization. In the future, multifunctional wearable biosensors are expected to become widespread, enabling continuous, non-invasive monitoring of individual health status. AI algorithms will integrate and analyze data from these sensors, facilitating ultra-early disease prediction, personalized preventive measures, and real-time evaluation of treatment efficacy. Furthermore, integration with blockchain technology may further enhance patient data security and privacy. This evolution is expected to contribute to the realization of more preventive, personalized, and accessible 'ubiquitous healthcare,' where diagnostics are deeply integrated into individuals' lives beyond conventional medical institutions. This transformation promises immeasurable impacts on extending healthy lifespans and improving public health globally.

---

Source: <https://www.propharmagroup.com/thought-leadership/faq-in-vitro-diagnostics-ivds>

# #28 Real-Time PAT Sensors Revolutionize Food, Beverage, and Industrial Bioprocessing Efficiency and Quality

Published June 30, 2026   LabX Media Group   USA



## OVERVIEW

Real-time Process Analytical Technology (PAT) sensors, including dissolved oxygen, pH, Raman, and Near-Infrared (NIR) probes, are being widely adopted for real-time monitoring in industrial bioprocessing and food/beverage fermentation. These sensors, supported by stoichiometric models, precisely track biomass, substrate consumption, and product titers, significantly enhancing efficiency and quality control. Originating from pharmaceutical bioprocessing, these technologies are now standardized across diverse industries, enabling deeper process understanding and control while reducing production costs.

## IN DEPTH

### Key Findings

Real-time Process Analytical Technology (PAT) sensors are rapidly expanding their footprint in industrial bioprocessing and food and beverage fermentation, setting new benchmarks for production efficiency and quality control. Advanced tools such as dissolved oxygen sensors, pH sensors, Raman spectroscopy, and Near-Infrared (NIR) probes are precisely tracking the dynamics of biomass, substrate consumption, and product titers.

### Technical/Clinical Details

These real-time monitoring tools are integrated with stoichiometric models, providing the capability to instantly detect and quantify minute changes within fermenters. This enables early identification of process deviations and allows for rapid corrective actions. For instance, Raman and NIR probes can non-invasively and simultaneously measure multiple components in a culture broth, offering comprehensive real-time profiles of complex bioreactions. This leads to reduced batch-to-batch variability and improved consistency of the final product.

### Background & Context

The concept of PAT was initially developed and implemented in pharmaceutical bioprocessing to ensure stringent quality control and regulatory compliance. Following its demonstrated success, the application scope has now expanded to include food, beverage, and various industrial bioprocessing sectors. Particularly, as the importance of sustainable manufacturing processes grows, these technologies contribute to optimizing resource utilization, minimizing waste, and enhancing energy efficiency.

## Strategic Significance & Outlook

The widespread adoption of real-time PAT sensors will accelerate the digitalization and automation of biomanufacturing, laying the groundwork for future 'smart factories.' Integration with AI and machine learning promises even more sophisticated predictive analytics and autonomous control, leading to systems that optimize processes with minimal human intervention. This is expected to expedite the development and market launch of new bio-products, contributing to the overall competitiveness of industrial sectors.

---

Source: <https://www.technologynetworks.com/tn/articles/pat-and-fermentation-monitoring-in-food-beverage-and-industrial-bioprocessing-413690>

Collected: July 03, 2026 | Automated Research System (Gemini API)

# #29 Bioprocessing Technologies Expand Beyond Pharma to Reshape Food Production, Environmental Applications, and Sustainable Manufacturing

Published June 25, 2026 LabX Media Group USA



## OVERVIEW

Core bioprocessing technologies such as fermentation bioreactors, membrane filtration, and PAT sensors are extending their reach beyond pharmaceuticals into food, industrial enzymes, biofuels, and environmental applications. Real-time spectroscopic monitoring tools like Raman and NIR probes are proving effective in diverse fermentation processes. The adoption of single-use bioprocessing infrastructure further enhances contamination control and efficiency, marking a critical advancement for sustainable manufacturing.

### Key Findings

Core bioprocessing technologies are driving transformative changes across diverse sectors beyond traditional pharmaceuticals, including food production, industrial enzymes, biofuels, and environmental applications. Fermentation bioreactors, advanced membrane filtration systems, and real-time Process Analytical Technology (PAT) sensors are central to enhancing efficiency and sustainability in these new application domains.

### Technical/Clinical Details

At the heart of this expansion is the integration of real-time spectroscopic monitoring tools. Raman and Near-Infrared (NIR) probes, in particular, have been validated for continuous, non-invasive measurement of biomass concentration, substrate consumption, and metabolite production across a wide range of fermentation processes. These sensors are crucial for gaining a deep understanding of process dynamics, identifying bottlenecks, and maintaining optimized operating conditions. Furthermore, the adoption of single-use bioprocessing infrastructure significantly improves process flexibility and economics, especially in food and environmental sectors, by reducing cross-contamination risks and shortening setup times.

### Background & Context

Historically, bioprocessing technologies have primarily been employed in the pharmaceutical industry for manufacturing complex biological products. However, with growing global demands for food security, energy independence, and environmental protection, the inherent value of these technologies is being re-evaluated. Bioprocessing offers sustainable solutions to various challenges, such as producing alternative proteins through precision fermentation, utilizing microorganisms in wastewater treatment, and efficiently generating biofuels.

## Strategic Significance & Outlook

Moving forward, these bioprocessing technologies are expected to evolve into more sophisticated autonomous control systems through integration with AI, machine learning, and the Internet of Things (IoT). This will enable predictive analytics for process optimization and remote monitoring and control, leading to the establishment of distributed, highly efficient biomanufacturing networks. These advancements are poised to play a crucial role in global efforts toward achieving a sustainable society.

---

Source: <https://www.technologynetworks.com/tn/articles/beyond-pharma-how-bioprocessing-technologies-are-reshaping-food-production-environmental-413689>

Collected: July 03, 2026 | Automated Research System (Gemini API)

# #30 Osaka University Develops Innovative Biosensor for Real-Time Tracking of Signaling Lipid PI(3,5)P2 in Live Cells using High-Throughput CLiB Assay

Published July 02, 2026 EurekaAlert! / University of Osaka Japan



## OVERVIEW

Researchers at Osaka University have developed a custom biosensor capable of sensitively and selectively tracking signaling lipids, such as PI(3,5)P2, in live cells using a high-throughput cell surface liposome binding (CLiB) assay with yeast cells and fluorescent readouts. This breakthrough addresses a major bottleneck in lipid research, offering potential for deeper understanding of membrane lipid environments in diseases like cancer, diabetes, and neurodegenerative disorders. The technology is expected to open new avenues for elucidating disease mechanisms and developing novel therapeutic strategies.

### Key Findings

Researchers at Osaka University have successfully developed an innovative biosensor capable of high-sensitivity and selective real-time tracking of signaling lipids, particularly membrane lipids like PI(3,5)P2, within live cells. This was achieved through a high-throughput method called the 'Cell Surface Liposome Binding (CLiB) assay,' which 'evolves' custom biosensors using yeast cells and fluorescent readouts.

### Technical/Clinical Details

The CLiB assay involves expressing specific lipid-binding domains on the surface of yeast cells and performing high-throughput evaluation of their binding to fluorescently labeled liposomes. This process efficiently screens and optimizes sensors with specific binding characteristics for the target lipid. This technology allows for the visualization of membrane lipid dynamics in live cells with high spatial and temporal resolution, a feat previously challenging. It provides a powerful tool for understanding the role of lipids in intracellular signaling pathways and how their aberrations contribute to disease. PI(3,5)P2, in particular, is known to play crucial roles in intracellular trafficking, autophagy, and neurodegenerative diseases.

### Background & Context

Lipids are not only structural components of cell membranes but also play critical roles in intracellular signaling. However, their complex structures and dynamic behaviors have made real-time tracking within live cells a long-standing challenge. Traditional biochemical methods and imaging techniques have struggled to capture lipid changes in living conditions, often confining research to in vitro systems. This breakthrough from Osaka University addresses this technological gap, ushering in a new paradigm for lipid biology research.

## Strategic Significance & Outlook

This innovative biosensor technology is expected to contribute to elucidating the mechanisms of various diseases linked to lipid metabolism abnormalities, such as cancer, diabetes, and neurodegenerative disorders like Alzheimer's and Parkinson's. By allowing detailed analysis of lipid dynamics in live cells, it could lead to the identification of new therapeutic targets for these diseases and serve as an evaluation tool in drug screening. Future prospects include developing sensors for a broader range of lipid molecules and expanding applications to in vivo studies using disease model animals.

---

Source: <https://www.eurekalert.org/news-releases/1134128>

Collected: July 03, 2026 | Automated Research System (Gemini API)

# #31 Zhejiang University Unveils Machine Learning-Enabled Implantable Plant Biomarker Sensor in Nature Communications, Revolutionizing Crop Health Monitoring

Published June 27, 2026 AcademicJobs.com China



## OVERVIEW

A research team at Zhejiang University has introduced a 'Machine Learning-Enabled Implantable Plant Biomarker Sensor (MLIPBS)' for the early detection and classification of abiotic stresses like acid and salt stress in plants. Published in Nature Communications, this innovation provides real-time insights into plant health, aiming to significantly boost crop yields. By integrating machine learning and nanotechnology, MLIPBS represents a breakthrough for agricultural sustainability and productivity.

## IN DEPTH

### Key Findings

A research team at Zhejiang University has developed a groundbreaking 'Machine Learning-Enabled Implantable Plant Biomarker Sensor (MLIPBS)' capable of early detection and classification of abiotic stresses, such as acid and salt stress, in plants. The findings were published in 'Nature Communications.' This innovative sensor promises to provide real-time insights into plant health, aiming to significantly enhance crop yields.

### Technical/Clinical Details

The MLIPBS integrates nanotechnology-based sensors with advanced machine learning algorithms. The sensors are implanted within plant tissues to continuously monitor changes in biomarkers related to acidity and salinity. The collected data is analyzed in real-time by machine learning models, which rapidly and accurately identify and classify specific stress factors. In contrast to conventional stress detection methods that rely on visual observation or time-consuming laboratory analyses, MLIPBS enables non-invasive and automated monitoring. This allows farmers to detect early signs of stress and implement appropriate measures before damage to crops becomes widespread.

### Background & Context

Global climate change and environmental degradation are severely impacting agricultural production. Specifically, soil acidification and salinization are major abiotic stress factors that inhibit crop growth and lead to reduced yields. These stresses often do not manifest visually in early stages and are frequently undetected until it's too late, posing a significant threat to agricultural sustainability and food security. MLIPBS represents a crucial step towards achieving precision agriculture and forms a foundational technology for enhancing adaptability to environmental changes.

## Strategic Significance & Outlook

Zhejiang University's research highlights the significant potential of biosensor technology in precision agriculture. MLIPBS will contribute to optimizing crop health and maximizing yields while minimizing resource waste. In the future, this technology could be applied to detect other abiotic stresses (e.g., drought, heavy metal contamination) and biotic stresses (e.g., pests and diseases). Furthermore, with broader application to various crops and integration with IoT and cloud platforms, it is expected to function as part of large-scale smart farming systems, potentially transforming global food production efficiency.

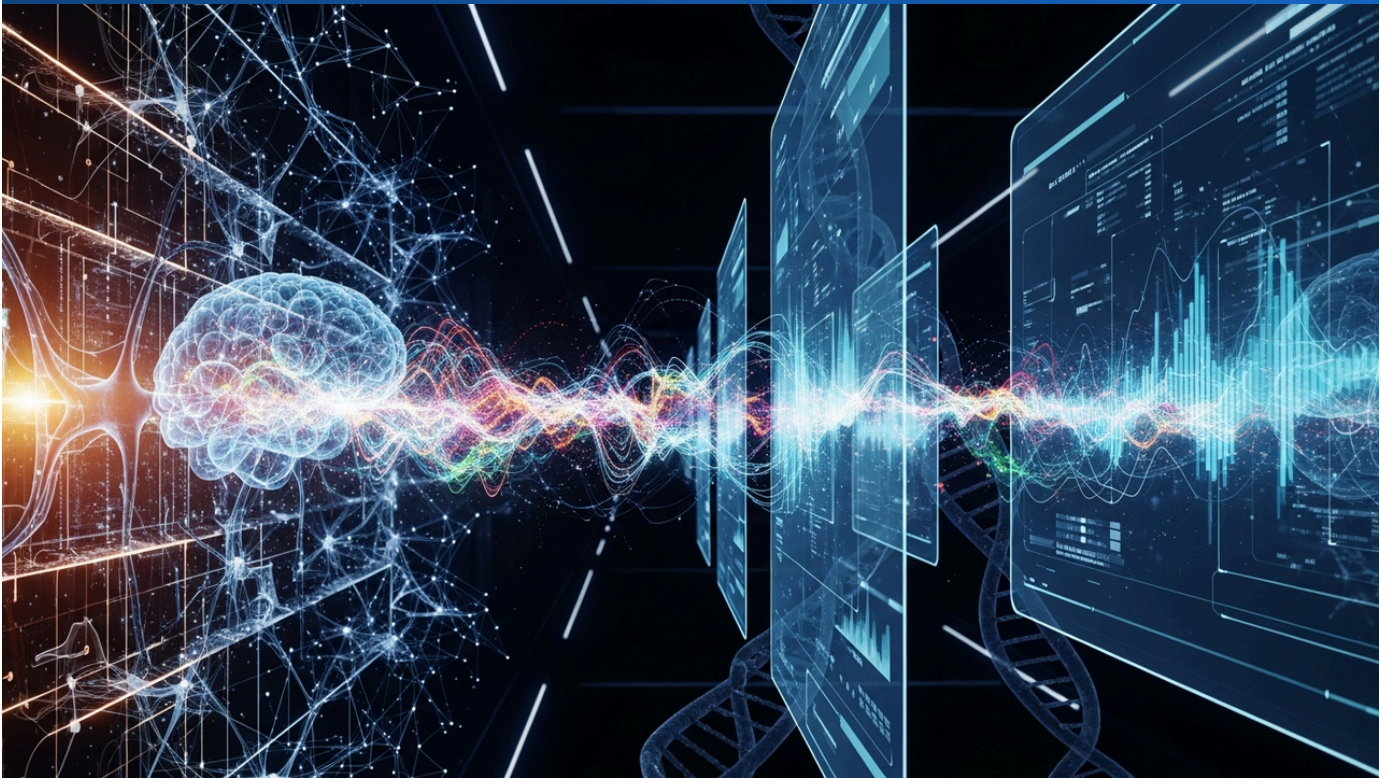
---

Source: <https://www.academicjobs.com/higher-education-news/zhejiang-university-plant-biomarker-sensors-breakthrough-or-nature-2026-15384>

Collected: July 03, 2026 | Automated Research System (Gemini API)

# #32 AI and Machine Learning Revolutionize Early Cancer Detection by Enhancing Diagnostic Accuracy through Multi-Omics Data Analysis

Published June 25, 2026   Research Paper   International



## OVERVIEW

This research highlights the transformative role of artificial intelligence (AI) and machine learning (ML) in analyzing multi-omics data (genomics, transcriptomics, proteomics, metabolomics) and medical images to identify biomarker signatures for early cancer detection. AI models improve diagnostic and prognostic accuracy, while advances in point-of-care (POC) and non-invasive technologies make early cancer biomarker detection more accessible. This is expected to lead to significant improvements in treatment outcomes.

## IN DEPTH

### Key Findings

This research paper clearly demonstrates the transformative impact of artificial intelligence (AI) and machine learning (ML) on biomarker analysis for early cancer detection. It emphasizes that AI/ML models possess the capability to integrate and analyze multi-omics data, including genomics, transcriptomics, proteomics, metabolomics, and medical imaging data, to accurately identify cancer-specific biomarker signatures.

### Technical/Clinical Details

The application of AI and ML enables the extraction of subtle patterns and correlations from data that might otherwise be overlooked by conventional methods, dramatically improving the accuracy of diagnosis and prognosis. For example, by comprehensively learning from vast patient multi-omics datasets, AI can identify combinations of biomarkers that suggest the presence of early-stage cancer, integrating multiple gene mutations or protein expression patterns associated with specific cancer types. This allows for precise risk assessment and personalized treatment selection for individual patients. Furthermore, advancements in point-of-care (POC) diagnostic technologies and non-invasive sampling methods (e.g., liquid biopsies) are making these AI-enhanced biomarker detection methods more accessible to clinical settings and the general public.

### Background & Context

The success of cancer treatment heavily relies on early detection. However, traditional cancer screening methods have faced challenges due to limitations in sensitivity or specificity, or being invasive with significant patient burden. The complexity of multi-omics data analysis and the increasing volume of data were beyond human capacity, but the evolution of AI and ML has addressed this bottleneck. This has the potential to improve the accuracy and efficiency of cancer diagnosis, allowing more patients to be diagnosed early and receive appropriate treatment.

## Strategic Significance & Outlook

The application of AI and ML to cancer biomarker detection is expected to continue its rapid development. In the future, these technologies will likely be integrated into routine examinations and more widely used as part of general health check-ups. Moreover, the identification and validation of 'digital biomarkers' — combinations of multiple biomarkers rather than single ones — will advance, leading to applications in more complex clinical challenges such as cancer risk stratification, prediction of treatment resistance, and recurrence monitoring. This will accelerate the realization of personalized cancer treatment and significantly contribute to improving patient outcomes and quality of life.

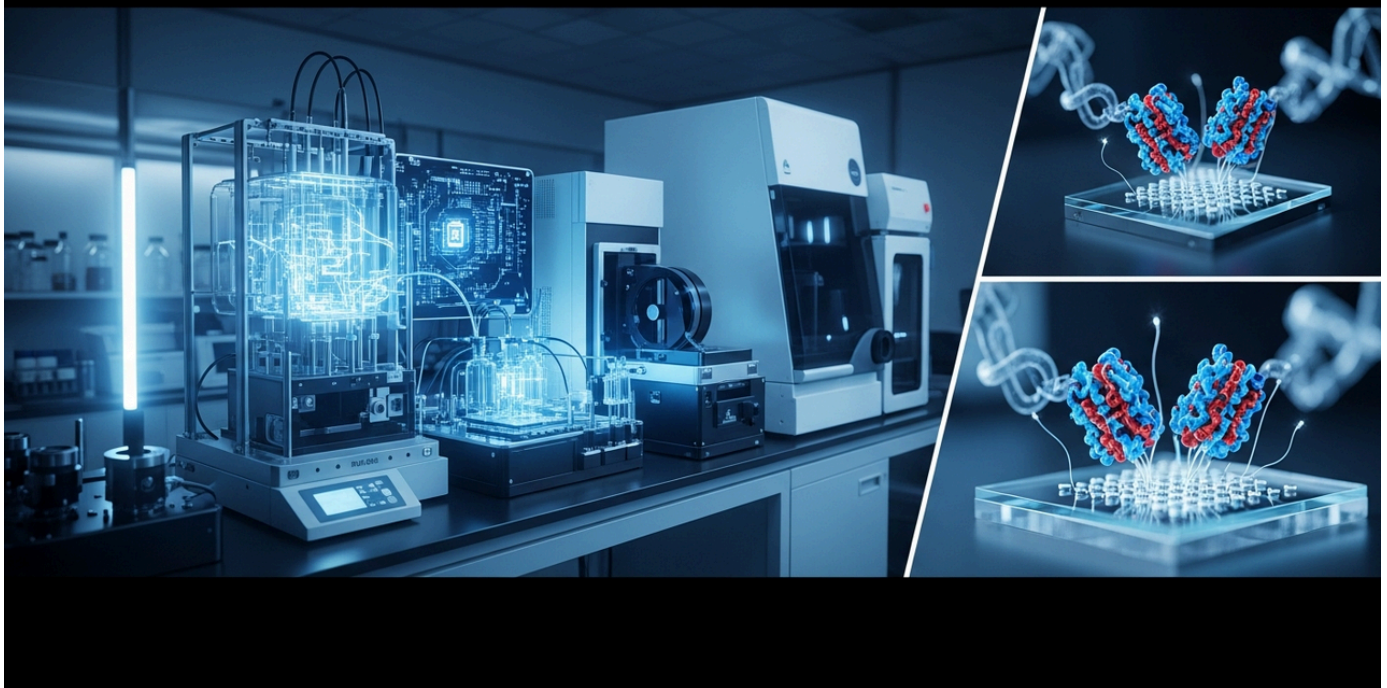
---

Source: <https://www.intechopen.com/online-first/1235874>

Collected: July 03, 2026 | Automated Research System (Gemini API)

# #33 NTHRYS Biotech Labs Develops AI-Powered CRISPR Biosensor Diagnostics for Pathogen Identification and Multiplex Biomarker Detection

Published July 03, 2026 NTHRYS Biotech Labs USA



## OVERVIEW

NTHRYS Biotech Labs is developing AI-powered CRISPR biosensor diagnostics for diverse applications, including real-time platforms for pathogen identification, multiplex biomarker detection kits for cancer, cardiovascular, and infectious diseases, and portable point-of-care (POC) testing devices. These solutions leverage AI models for data interpretation, disease pattern identification, outcome prediction, and seamless integration with existing lab and health record systems, significantly enhancing diagnostic efficiency and accuracy.

### Key Findings

NTHRYS Biotech Labs is pioneering the development of Artificial Intelligence (AI)-powered CRISPR biosensor diagnostics for a wide range of applications. This innovative approach enables real-time pathogen identification, multiplex biomarker detection for various diseases (cancer, cardiovascular, infectious diseases), and the creation of portable point-of-care (POC) testing devices. AI models are central to data interpretation, disease pattern identification, outcome prediction, and seamless integration with existing healthcare systems, streamlining the entire diagnostic process.

### Technical/Clinical Details

CRISPR technology offers high specificity and sensitivity as a biosensor due to its ability to target specific DNA or RNA sequences and generate a signal upon cleavage or binding. NTHRYS Biotech Labs combines CRISPR's molecular recognition capabilities with AI's pattern recognition and predictive power to build systems that yield results significantly faster and more accurately than conventional diagnostics. For instance, pathogen identification platforms can detect microbial genetic material with high precision using minimal sample preparation, providing on-site results. Multiplex biomarker detection kits allow simultaneous evaluation of multiple disease-related markers in a single test, aiding in early diagnosis and personalized treatment selection for complex diseases. POC devices are designed for use outside hospital settings, improving diagnostic access in emergencies and remote areas.

### Background & Context

Modern healthcare diagnostics demand speed, accuracy, and accessibility. Traditional diagnostic methods often require significant time, cost, and specialized expertise, posing limitations particularly for infectious disease outbreaks and early detection of chronic conditions. The convergence of CRISPR and AI offers a powerful tool to overcome these challenges, opening the next frontier in diagnostics. This technology is expected to advance personalized medicine, strengthen public health, and optimize healthcare resource allocation.

## Strategic Significance & Outlook

The developments by NTHRYS Biotech Labs have the potential to profoundly impact the diagnostics market. In the future, these AI-CRISPR biosensors are expected to be applied to a broader range of disease markers, more complex environmental monitoring, and even personalized drug screening. Through continuous research and clinical validation, these diagnostics could become standard tools in medical practice, significantly improving patient health outcomes and contributing to healthcare cost reduction. They also hold promise for enhancing global health security.

---

Source: <https://nthrys.com/home/pdfs/projects/ai-biosensors--ai-crispr-based-biosensor-diagnostics-development.pdf>

Collected: July 03, 2026 | Automated Research System (Gemini API)

# #34 Kyushu University Kameoka Lab Develops Low-Cost, High-Precision Biosensors for Real-Time Uric Acid, Glucose, and pH Monitoring

Published July 01, 2026 九州大学 Japan



## OVERVIEW

Researchers at Kyushu University's Kameoka Lab are developing a suite of low-cost, high-precision biosensors for continuous, real-time physiological monitoring, designed for seamless integration with the Internet of Medical Things (IoMT). These innovations include microneedle, wearable, and implantable sensors targeting biomarkers like uric acid, glucose, and pH. Leveraging advanced AI, including machine learning and large language models, the project aims to revolutionize early detection of chronic disease anomalies and enable personalized health management.

### Background

The global burden of chronic diseases underscores an urgent need for more effective, proactive management strategies. Current clinical practices often rely on intermittent physiological monitoring, which frequently fails to capture the subtle, daily fluctuations crucial for early intervention and personalized care. This gap highlights a significant opportunity for continuous, real-time physiological monitoring solutions. Affordable, high-precision wearable and implantable biosensors, coupled with robust data infrastructure like the Internet of Medical Things (IoMT), are poised to transform chronic disease management by empowering individuals to take active control of their health from any location, fostering a new era of telehealth and preventive medicine.

### Key Findings

The Kameoka Lab at Kyushu University is at the forefront of developing a new generation of low-cost, high-precision biosensors engineered for continuous, real-time monitoring of critical biomarkers. These innovations are explicitly designed for seamless integration within Internet of Medical Things (IoMT) platforms, driving toward the ultimate goal of early anomaly detection in chronic diseases and truly personalized health management.

The lab's portfolio encompasses a diverse array of sensor technologies. This includes **microneedle electrochemical sensors** for painless, continuous transdermal monitoring of uric acid and pH, offering crucial insights into metabolic and systemic health. For non-invasive external monitoring, **wearable colorimetric sensors** are being developed to measure glucose and lactate levels in sweat, proving invaluable for exercise physiology and diabetes management. Furthermore, the team is advancing **implantable hydrogel biosensors**, which hold the promise of long-term surveillance within deeper physiological environments. The sheer volume of data generated by these continuous monitoring systems is processed and analyzed using sophisticated **machine learning (ML) and deep learning (DL) algorithms**. This enables automated detection of subtle deviations from an individual's baseline physiological patterns, facilitating unprecedented early identification of disease onset. The research also extends to exploring the utility of **large language models (LLMs)** to provide diagnostic support, translating complex data analysis into easily digestible insights for both clinicians and patients, thereby improving communication and understanding.

This research is poised to significantly impact the future of personalized medicine. Future work will focus on rigorous clinical validation of these sensor technologies, expanding the range of detectable biomarkers, and enhancing the predictive capabilities of their AI-driven analytics. The widespread adoption of these advanced biosensing and AI platforms is anticipated to revolutionize early disease detection and management, leading to substantial reductions in healthcare costs and a profound improvement in global healthy life expectancies.

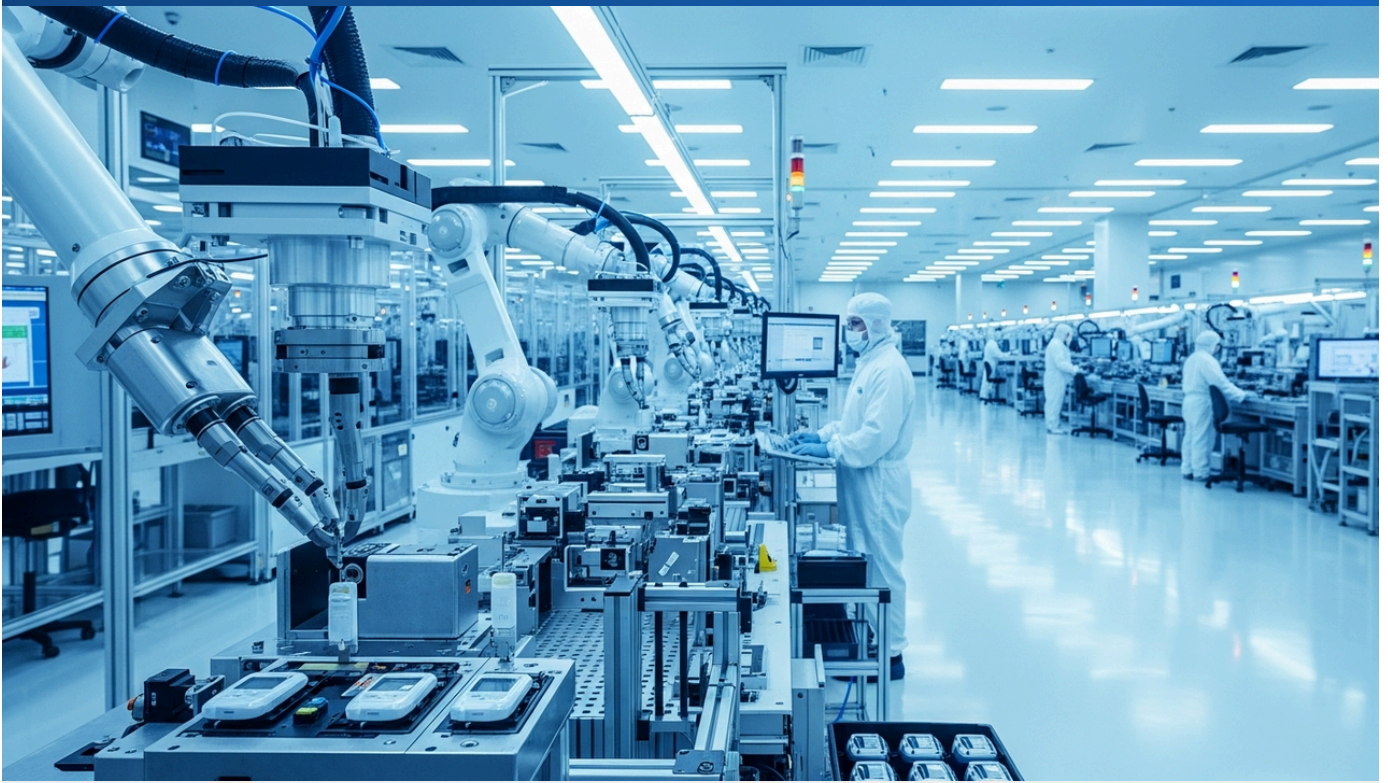
---

Source: #

Collected: July 03, 2026 | Automated Research System (Gemini API)

# #35 ALR Technologies to Acquire CGM Medical Shenzhen, Boosting CGM Manufacturing Capacity to 300,000 Units Monthly by January 2027

Published June 30, 2026 ALR Technologies (Press Release) USA



## OVERVIEW

ALR Technologies announced plans to acquire CGM Medical Shenzhen to enhance its development of accurate and affordable continuous glucose monitor (CGM) devices for diabetes management. This acquisition aims to increase the company's CGM manufacturing capacity to 300,000 units per month by January 2027. ALR Technologies also highlights its GluCurve Pet CGM, designed to optimize insulin treatment for animals, marking a strategic move to significantly boost market supply capabilities.

### Key Findings

ALR Technologies has announced its plan to acquire CGM Medical Shenzhen, a strategic move aimed at significantly expanding its manufacturing capacity for continuous glucose monitor (CGM) devices for diabetes management. This acquisition is projected to enable a monthly production capacity of 300,000 CGM units by January 2027, bolstering ALR Technologies' ability to supply accurate and affordable CGM devices globally.

### Technical/Clinical Details

ALR Technologies focuses on developing precise and user-friendly CGM devices for continuous blood glucose monitoring in diabetic patients. The acquisition of CGM Medical Shenzhen will strengthen the company's manufacturing infrastructure and supply chain, accelerating product output and time-to-market. This enhancement will allow more diabetic patients to benefit from personalized treatment management based on real-time glucose data. Furthermore, ALR Technologies has also developed the GluCurve Pet CGM, an innovative solution designed to optimize insulin treatment for animals, thereby promoting personalized disease management in the veterinary field as well.

### Background & Context

The CGM market is experiencing rapid growth driven by the increasing global diabetic population and the rising demand for more effective self-management tools. CGMs are rapidly gaining adoption as alternatives to traditional blood glucose meters, as they have the potential to improve patients' quality of life and reduce the risk of complications. ALR Technologies' acquisition is a critical strategy to respond to these market trends and establish a competitive advantage in terms of cost-efficiency and supply capacity within the highly competitive CGM market.

## Strategic Significance & Outlook

This acquisition will significantly enhance ALR Technologies' market presence and potentially expand access for diabetic patients worldwide, particularly in underserved regions. The targeted monthly manufacturing capacity of 300,000 units is crucial for solidifying the company's position as a key player in the CGM market. Going forward, continued improvements in manufacturing efficiency, integration of new technologies, and securing regulatory approvals in a broader range of geographies will be key to its growth. This is expected to further promote technological innovation and improved accessibility in diabetes management.

---

Source: <https://www.alrt.com/news/2026/06/30/alrt-cgm-medical-acquisition>

Collected: July 03, 2026 | Automated Research System (Gemini API)

# #36 NTHRYS Biotech Labs Revolutionizes Real-Time Monitoring in Food, Environmental, and Pharmaceutical Sectors with AI-Powered Microbial Biosensors

Published July 03, 2026 NTHRYS Biotech Labs USA



## OVERVIEW

NTHRYS Biotech Labs is developing AI-powered microbial biosensors for diverse industrial and clinical applications, including cloud-based SaaS platforms for real-time detection of foodborne pathogens and environmental contaminants, IoT systems for automated water quality monitoring, and enterprise software for sterility assurance in pharmaceutical manufacturing. These technologies aim to reduce batch failures, optimize processes, and enable rapid infectious disease diagnosis (under 30 minutes), significantly improving industrial efficiency and public health.

## IN DEPTH

### Key Findings

NTHRYS Biotech Labs is advancing the development of Artificial Intelligence (AI)-powered microbial biosensors, revolutionizing real-time monitoring across diverse industrial and clinical sectors, including food, environmental, and pharmaceutical industries. These solutions aim to reduce batch failures, optimize processes, and enable rapid diagnosis of infectious diseases (under 30 minutes).

### Technical/Clinical Details

The microbial biosensors developed by NTHRYS Biotech Labs integrate several advanced technologies. Specifically, their cloud-based Software as a Service (SaaS) platform for real-time detection of foodborne pathogens and environmental contaminants aggregates data from distributed sensor networks and uses AI algorithms to instantly identify anomalies. The Internet of Things (IoT) system for automated water quality monitoring continuously collects sensor data and provides early warnings of potential contamination risks. Enterprise software for sterility assurance in pharmaceutical manufacturing monitors microbial contamination on production lines in real-time, aiming to reduce batch failure risks by 30-40%. These systems leverage AI for data analysis, disease pattern identification, and outcome prediction, achieving dramatic improvements in operational efficiency and quality control through seamless integration with existing systems.

### Background & Context

Food safety, environmental protection, and quality control in pharmaceutical manufacturing are critical issues directly impacting public health and the economy. Traditional microbial detection methods have been time-consuming, labor-intensive, and challenging for real-time responses. The integration of AI and biosensors offers a groundbreaking solution to overcome these challenges, enabling faster and more accurate decision-making. Particularly, rapid infectious disease diagnosis is indispensable for pandemic preparedness and responding to public health crises.

## Strategic Significance & Outlook

NTHRYS Biotech Labs' microbial biosensor technology is poised to accelerate industrial digital transformation and contribute to creating a safer, more sustainable society. In the future, these systems are expected to evolve further, with advancements in predictive maintenance, autonomous process control, and expanded detection capabilities for new types of pathogens and contaminants. They are anticipated to play a central role in strengthening global food security, improving the accuracy of environmental monitoring, and ensuring manufacturing efficiency and product quality in the pharmaceutical industry.

---

Source: <https://nthrys.com/home/pdfs/projects/ai-microbiology--ai-microbial-biosensor-development-industry.pdf>

Collected: July 03, 2026 | Automated Research System (Gemini API)

# #37 Graphene Derivative-Based Biosensors Exhibit High Performance in Diagnostics, Environmental, and Food Safety: A Bibliometric Analysis

Published June 26, 2026 EASI: Ingeniería y Ciencias Aplicadas en la Industria (Journal)  
エクアドル



## OVERVIEW

A recent bibliometric analysis highlights the burgeoning role of graphene and its derivatives in biotechnology, particularly for advanced biosensors in clinical diagnostics, environmental monitoring, and food safety. These graphene-based materials, often integrated with nanometals and 3D architectures, are crucial for developing highly sensitive and selective detection devices. Key emerging trends include portable, non-invasive diagnostic technologies, exemplified by breath acetone biosensors for pre-diabetes detection, promising significant advancements in medical applications.

### Background

Diagnostic technologies are pivotal for early disease detection and advancing personalized medicine. Since its isolation in 2004, graphene has been lauded as a 'wonder material,' with its unparalleled properties accelerating applied research across numerous sectors. Within the biosensor field, graphene is poised to overcome conventional material limitations, paving the way for superior device performance. Furthermore, escalating environmental concerns and more stringent food safety regulations are fueling demand for sophisticated, high-performance sensor technologies.

### Key Findings

A recent bibliometric analysis underscores the rapid expansion of graphene and its derivatives within biotechnology. The study specifically highlights that graphene-based materials are instrumental in creating biosensors with unprecedented sensitivity and selectivity, critically impacting clinical diagnostics, environmental monitoring, and food safety applications.

### Technical Details

Graphene's exceptional electrical, mechanical, and optical properties make it an ideal foundational material for advanced biosensors. Its integration with nanometals, such as gold nanoparticles, and sophisticated 3D architectures like porous graphene, significantly enhances sensor surface area and conductivity. This synergistic approach dramatically boosts biomolecule immobilization efficiency and signal amplification, enabling highly sensitive detection of analytes even at extremely low concentrations, thereby substantially improving detection limits over conventional methods. An exciting emerging trend is the development of portable, non-invasive diagnostic technologies, illustrated by portable biosensors designed for breath acetone detection to aid in pre-diabetes diagnosis. Such innovations not only enhance patient convenience but also broaden access to crucial early diagnostic insights.

## Strategic Outlook

The future for graphene derivative-based biosensors is exceptionally promising. Continued research and development are anticipated to yield smaller, more multifunctional devices. These next-generation sensors are expected to be integrated into wearable and implantable technologies, facilitating continuous, real-time health monitoring and environmental surveillance. This trajectory will significantly advance preventive medicine, telemedicine, and the pursuit of a sustainable society, simultaneously catalyzing the creation of new industrial opportunities.

---

Source: <https://revistas.ug.edu.ec/index.php/easi/es/article/view/2980/6246>

Collected: July 03, 2026 | Automated Research System (Gemini API)

# #38 NTHRYS Biotech Labs Develops Cloud Platform with IoT Sensors and AI to Cut Fermentation Batch Failures by 30-40% and Optimize Bioprocesses

Published July 03, 2026 NTHRYS Biotech Labs USA



## OVERVIEW

NTHRYS Biotech Labs is developing advanced fermentation technology and bioprocess engineering solutions, including a cloud-based software platform integrated with IoT sensors and AI algorithms. This platform provides real-time monitoring of fermentation parameters, prediction of process deviations, and yield optimization in manufacturing facilities. It aims to reduce batch failures by 30-40% and cut operational costs through automated process optimization and predictive maintenance, significantly improving biomanufacturing efficiency and sustainability.

## IN DEPTH

### Key Findings

NTHRYS Biotech Labs is revolutionizing fermentation technology and bioprocess engineering with a cloud-based software platform that integrates IoT sensors and AI algorithms. This advanced solution dramatically improves the efficiency and profitability of biomanufacturing processes by aiming to reduce batch failure rates by 30-40% and significantly lower operational costs.

### Technical/Clinical Details

The platform utilizes IoT sensors for real-time monitoring of critical parameters within bioreactors, such as dissolved oxygen, pH, temperature, optical density (OD), and specific metabolite concentrations. Collected data is uploaded to the cloud and continuously analyzed by AI algorithms. The AI learns from historical data patterns and correlates them with current process data to predict potential process deviations, issuing alerts before they lead to yield losses. Furthermore, the AI recommends optimal fermentation conditions and automatically adjusts process parameters to maximize yields. Automated process optimization and predictive maintenance features minimize downtime and reduce resource waste, leading to improved product consistency and reduced manufacturing costs.

### Background & Context

Fermentation and bioprocesses are indispensable manufacturing methods across numerous industries, including pharmaceuticals, food, beverage, biofuels, and chemicals. However, these processes are complex and highly variable, with batch-to-batch quality inconsistencies and low yields being long-standing challenges. Traditional monitoring and control systems often rely on manual intervention and offline analysis, limiting real-time optimization. The integration of IoT and AI offers a groundbreaking solution to address these issues, transforming biomanufacturing into a more predictable, efficient, and scalable endeavor.

## Strategic Significance & Outlook

This platform from NTHRYS Biotech Labs will act as an accelerator for digital transformation in the biomanufacturing industry. In the future, this technology is expected to be applied to a wider range of bioprocesses, enabling global optimization across multiple manufacturing sites. As AI evolves, it may also play a role in modeling and controlling more complex bioreactions, and even streamlining the entire development process for new biological products. This will significantly contribute to the growth of the bioeconomy and the realization of sustainable production.

---

Source: <https://www.nthrys.com/home/pdfs/projects/biotechnology--fermentation-technology-and-bioprocess-engineering.pdf>

Collected: July 03, 2026 | Automated Research System (Gemini API)

# #39 Affordable Sensor Innovations Democratize Neuroscience: Electrochemical and Optical Biosensors Drive Personalized Healthcare

Published June 25, 2026 JATIR (Journal of Academic Trends & Innovative Research) International



## OVERVIEW

This article explores innovations in affordable sensor technologies within neuroscience and broader biomedical applications, contributing to personalized healthcare. Electrochemical biosensors are cost-effective for glucose, pathogen, and drug monitoring, while optical biosensors offer high sensitivity for medical diagnostics and environmental sensing. Their utility is discussed across therapeutic monitoring, quality assurance via microbial contamination detection in manufacturing, and personalized medicine through biomarker monitoring for cardiac markers and cancer antigens, making these technologies more broadly accessible.

### Key Findings

Innovations in affordable sensor technologies within neuroscience and broader biomedical applications are significantly advancing the realization of personalized healthcare. Both electrochemical and optical biosensors are proving immensely useful for therapeutic monitoring, quality assurance, and biomarker monitoring due to their cost-effectiveness and high sensitivity, respectively.

### Technical/Clinical Details

Electrochemical biosensors are widely utilized for glucose monitoring, pathogen detection, and drug concentration monitoring, primarily due to their cost-effectiveness. These sensors function by measuring changes in current or potential in response to the presence of an analyte, offering portable and rapid results. Optical biosensors, on the other hand, provide highly sensitive detection capabilities in medical diagnostics and environmental sensing. They detect analytes by utilizing changes in optical properties such as fluorescence, absorbance, or surface plasmon resonance (SPR). These sensors are applied to monitor biomarkers like cardiac markers and cancer antigens, enabling early disease detection and tracking of progression. In manufacturing, real-time detection of microbial contamination enhances product quality assurance and safety, reducing economic losses from batch failures.

### Background & Context

Modern healthcare systems demand early disease detection, personalized treatments, and a shift towards preventive medicine. However, access to expensive diagnostic equipment and specialized tests has often been limited. The advent of affordable, high-performance sensor technologies is bridging this gap, with the potential to democratize healthcare services. Particularly in neuroscience, non-invasive and continuous monitoring is crucial for unraveling complex brain functions and the mechanisms of neurodegenerative diseases.

## Strategic Significance & Outlook

Advances in affordable sensor technology will profoundly transform the future of personalized and preventive medicine. In the coming years, these sensors are expected to be integrated into wearable and implantable devices, leading to more widespread continuous health monitoring in daily life. Furthermore, linkage with AI and machine learning algorithms will provide deeper insights from collected data, improving the accuracy of early disease prediction and personalized interventions. This is expected to contribute significantly to reducing healthcare costs and improving patients' quality of life.

---

Source: [https://jatir.org/publishedpapers/140701\\_PAPER.pdf](https://jatir.org/publishedpapers/140701_PAPER.pdf)

Collected: July 03, 2026 | Automated Research System (Gemini API)

# #40 Hamilton Unveils Innovative Bioprocess Sensors at Interphex for Real-Time Live Cell Density and CO<sub>2</sub> Measurement

Published June 28, 2026 BioProcess Insider USA



## OVERVIEW

Hamilton announced new in-line sensors for bioprocess monitoring at Interphex, including Incyte Arc for live cell density, Dencytee Arc as an optical density-based total cell density sensor for fermentation, and CO<sub>2</sub>NTROL, a maintenance-free in-line dissolved CO<sub>2</sub> measurement system for mammalian cell culture. These sensors aim to dramatically improve process understanding and control in biomanufacturing by providing continuous, real-time biomass and CO<sub>2</sub> measurements, contributing to enhanced production efficiency and quality consistency.

## IN DEPTH

### Key Findings

Hamilton has unveiled innovative in-line sensors for bioprocess monitoring at Interphex. These sensors are designed to dramatically enhance the understanding and control of biomanufacturing processes by offering continuous, real-time measurement capabilities for live cell density, total cell density, and dissolved CO<sub>2</sub>.

### Technical/Clinical Details

The key products announced include:

- **Incyte Arc:** This advanced sensor measures live cell density, enabling non-invasive, real-time assessment of cell growth status in cell culture processes. This contributes to optimizing timing for cell harvest and nutrient feeding strategies.
- **Dencytee Arc:** An optical density-based total cell density sensor specifically designed for fermentation processes, providing accurate and continuous measurement of biomass in microbial cultures. Real-time insights into process progression support decisions on harvest timing and process adjustments.
- **CO<sub>2</sub>NTROL:** A maintenance-free, in-line dissolved CO<sub>2</sub> measurement system tailored for mammalian cell culture. By accurately monitoring CO<sub>2</sub> concentrations, which directly reflect cellular respiration activity, it helps maintain environmental stability and promotes healthy cell growth. A key feature is the significant reduction in maintenance compared to traditional systems.

These sensors collectively facilitate data-driven decision-making, improve process consistency, and reduce batch-to-batch variability.

### Background & Context

In the biomanufacturing industry, efficient and reliable control of complex biological processes has always been a challenge. Particularly for producing high-quality biopharmaceuticals and bioproducts, detailed real-time process information is indispensable. Traditional offline analyses are time-consuming and often fail to capture the full dynamics of the process. Hamilton's new in-line sensors address these challenges and accelerate the industry's trend toward digitalization and automation.

## Strategic Significance & Outlook

These new sensor technologies from Hamilton are expected to play a crucial role in optimizing biomanufacturing processes and enhancing scalability. By combining real-time data with advanced process control strategies, improvements in productivity, cost reduction, and shorter time-to-market are anticipated. In the future, these sensors are likely to be integrated with AI and machine learning platforms, enabling more sophisticated predictive analytics and autonomous process control, thereby paving the way for next-generation smart biofactories.

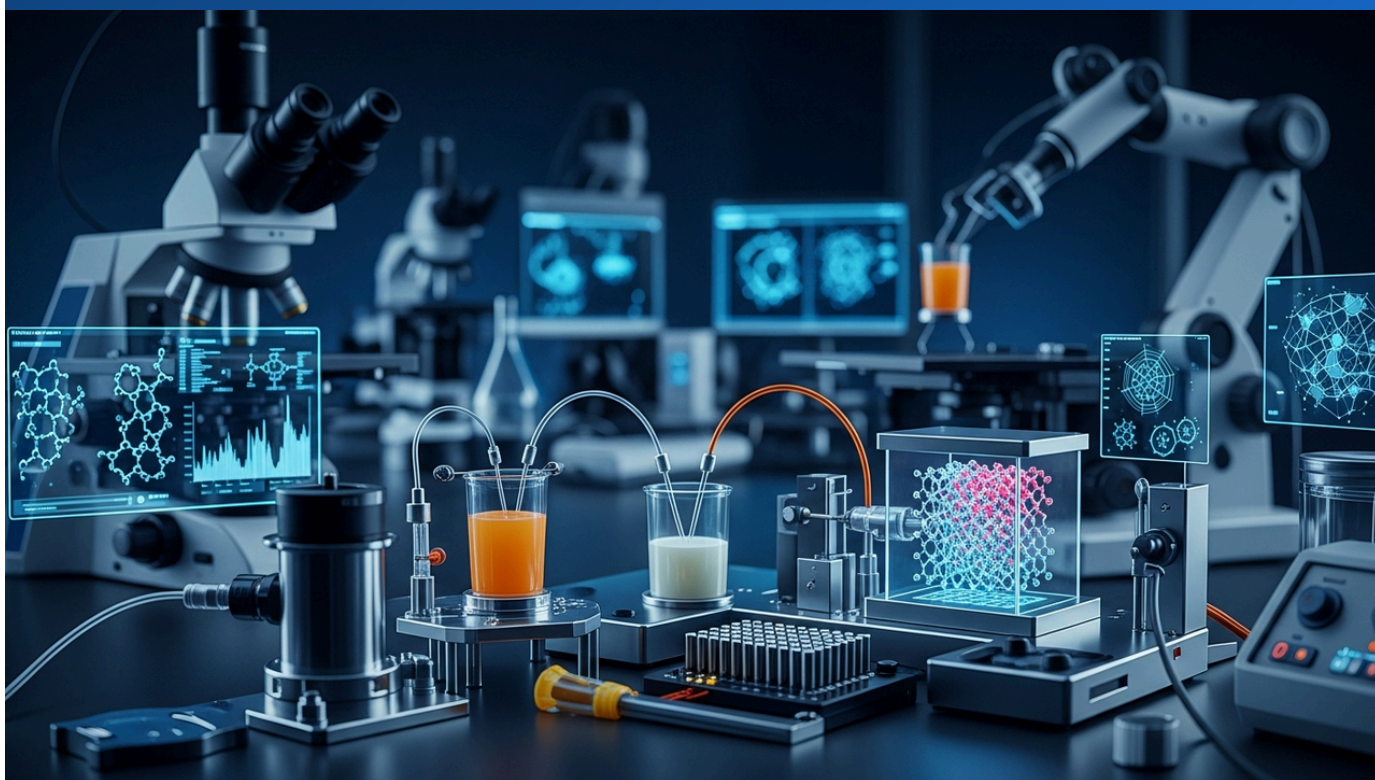
---

Source: <https://www.bioprocessintl.com/webcasts/making-sensor-at-interphex-hamilton-showcases-process-analytics-tech>

Collected: July 03, 2026 | Automated Research System (Gemini API)

# #41 Metal-Organic Framework (MOF)-Driven Sensors Achieve Ultra-High Sensitivity of 0.32 pg/mL for Rapid Mycotoxin Detection in Food

Published June 25, 2026 ACS Publications USA



## OVERVIEW

This review details recent advancements in Metal-Organic Framework (MOF)-driven sensors (MD sensors) for rapid early warning of mycotoxins in food. MD sensors offer advantages such as low cost, ultra-high detection sensitivity (reported down to 0.32 pg/mL for OTA), and in situ detection capabilities. Various sensing methods, including electrochemical, fluorescence, colorimetric, and SERS, are discussed, highlighting their portability and broad application prospects for on-site real-time food safety monitoring.

## IN DEPTH

### Key Findings

Metal-Organic Framework (MOF)-driven sensors (MD sensors) for rapid early warning of mycotoxins in food have made remarkable progress. These sensors achieve ultra-high sensitivity, exemplified by a reported limit of detection (LOD) as low as 0.32 pg/mL for Ochratoxin A (OTA), revolutionizing the field of food safety.

### Technical/Clinical Details

MD sensors leverage their unique porous structures and tunable chemical properties to facilitate specific interactions with mycotoxin molecules. This review discusses various sensing methods, including electrochemical, fluorescence, colorimetric, and surface-enhanced Raman scattering (SERS), integrated with MOF materials. For instance, electrochemical MD sensors measure changes in electrical signals upon mycotoxin binding, providing rapid and quantitative results. Fluorescent MD sensors utilize the principle that fluorophores embedded in MOFs change their fluorescence intensity upon interaction with mycotoxins. Colorimetric MD sensors provide visually discernible color changes for detection results, while SERS-based MD sensors enhance the intrinsic Raman spectra of mycotoxin molecules, enabling ultra-high sensitive detection.

Key advantages of these MD sensors include low-cost fabrication, high detection sensitivity, and in situ detection capabilities. This allows for real-time monitoring of food safety directly at production sites, food processing facilities, and even at the consumer level, without the need for complex laboratory equipment. This significantly enhances quality control and risk mitigation throughout the entire food supply chain.

### Background & Context

Mycotoxins are toxic compounds produced by molds that contaminate agricultural products and foods, posing serious health threats to humans and animals. Their widespread presence is a global challenge, leading to stricter food safety regulations in many countries. Traditional mycotoxin detection methods have often been time-consuming, expensive, and required specialized training. The advancements in MD sensors offer a groundbreaking solution to overcome these challenges, providing faster and more cost-effective approaches that could fundamentally change quality assurance systems in the food industry.

## Strategic Significance & Outlook

The future outlook for MD sensor technology is highly promising, with further research and development expected to lead to improved multiplexing capabilities, integration into portable devices, and an expanded detection range for different types of mycotoxins. In conjunction with AI and IoT, these sensors will function as integral components of smart food safety monitoring networks, becoming indispensable tools for enhancing the safety of the global food supply chain. This could establish new standards for reducing the risk of foodborne illnesses and protecting public health.

---

Source: <https://pubs.acs.org/doi/10.1021/acs.jafc.6c03100>

Collected: July 03, 2026 | Automated Research System (Gemini API)

# #42 Software-Driven Method Improves Detection Limits in Capillary Diagnostic Assays, Reliably Identifying Weak Positive Samples Earlier

Published June 29, 2026 Preprints.org International



## OVERVIEW

This study proposes a software-driven method utilizing kinetic image analysis and time-resolved signal extraction to improve the detection limits of capillary diagnostic assays (e.g., lateral flow immunoassays, paper microfluidic systems, fluorescent biosensors). This approach aims for earlier and more reliable identification of weak positive samples, enhancing the sensitivity, quantitative accuracy, and robustness of next-generation point-of-care diagnostics. Potential integration with smartphone imaging systems is also suggested, elevating the quality of decentralized diagnostics.

### Key Findings

This study proposes a groundbreaking software-driven method to dramatically improve the detection limits in capillary diagnostic assays, including lateral flow immunoassays, paper microfluidic systems, and fluorescent biosensors. By leveraging kinetic image analysis and time-resolved signal extraction, this new approach enables earlier and more reliable identification of weak positive samples, which might otherwise be overlooked by conventional diagnostic methods.

### Technical/Clinical Details

The proposed method involves detailed image analysis of the temporal evolution of reactions occurring on assay strips, and introduces time resolution into signal extraction to enhance the ability to distinguish true positive signals from background noise. This significantly lowers the limit of detection (LOD), allowing for the detection of extremely low analyte concentrations. For example, in lateral flow tests, by continuously capturing and analyzing the dynamics of color band progression over time, target substances can be detected at lower concentrations and earlier than at the final readout time. This technology holds the potential to vastly improve the sensitivity, quantitative accuracy, and overall robustness of next-generation point-of-care (POC) diagnostic devices. Furthermore, integration with smartphone camera systems is suggested, eliminating the need for specialized reader devices and enabling high-precision diagnostics conveniently anywhere.

### Background & Context

Rapid diagnostics, especially POC diagnostics, are indispensable tools for early detection of infectious diseases, management of chronic conditions, and telemedicine. However, while existing capillary diagnostic assays are widely adopted due to their convenience, they have limitations in performance when high detection sensitivity is required. Therefore, there has been a demand for new technologies that can provide more sensitive and quantitative information rapidly. This research addresses this performance gap through software and advanced image analysis, without requiring significant changes to existing hardware.

## Strategic Significance & Outlook

This software-driven method is applicable to a wide range of capillary diagnostic assays and is expected to have a significant impact on the diagnostic field. Its value is anticipated to be particularly evident in early screening during infectious disease pandemics, and ultra-early detection of biomarkers for cancer and cardiovascular diseases. In the future, this technology is likely to become widespread as a smartphone application, significantly contributing to public health and the advancement of personalized medicine. This will improve healthcare access and enable rapid interventions based on diagnostic results, thereby enhancing patient outcomes.

---

Source:

[https://www.preprints.org/frontend/manuscript/25f2ce8b4d7f7e94b81b2de823ba53e0/download\\_pub](https://www.preprints.org/frontend/manuscript/25f2ce8b4d7f7e94b81b2de823ba53e0/download_pub)

Collected: July 03, 2026 | Automated Research System (Gemini API)

# #43 Flinders University Study Reveals AI-Based Sensing Solutions Revolutionizing Food Industry Quality Control and Safety Assurance

Published June 25, 2026 Flinders University Australia

Flinders University

## AI-based sensing solutions revolutionize quality control and safety assurance in the food industry

June 25, 2026



### OVERVIEW

Flinders University research explores the transformative role of AI-based sensing solutions for real-time quality control and proactive safety assurance in the food industry. It emphasizes the synergy between advanced sensing technologies and sophisticated AI models, particularly the integration of low-cost, non-invasive sensors with machine learning algorithms. These solutions optimize performance for real-time decision-making across applications like food quality monitoring, safety, smart packaging, and supply chain tracking, enhancing industry sustainability and efficiency.

### Key Findings

As research from Flinders University highlights, Artificial Intelligence (AI)-based sensing solutions are fundamentally transforming real-time quality control and proactive safety assurance in the food industry. This technology integrates low-cost, non-invasive sensors with advanced machine learning algorithms, enabling unprecedented levels of monitoring and optimization for food quality and safety.

### Technical/Clinical Details

At the core of AI-based sensing solutions is the synergy between advanced sensing technologies and sophisticated AI models. For instance, electrochemical, optical, and acoustic sensors are used to detect specific biomarkers indicative of microbial growth, freshness, or contaminant presence. These sensors collect data non-invasively or with minimal intrusion directly from food products. The vast amounts of collected data are analyzed in real-time by machine learning algorithms, which instantly identify quality degradation, contamination, or anomalous patterns. This automated analysis is significantly faster and more accurate than human-driven methods, optimizing real-time decision-making across diverse applications such as food quality monitoring, smart packaging, and supply chain tracking. This leads to reduced product waste and enhanced consumer safety.

### Background & Context

The food industry faces increasing demands from consumers and regulatory bodies regarding safety, quality, and sustainability. Traditional quality control methods often rely on sampling and time-consuming laboratory analyses, making real-time intervention difficult. The globalization of food supply chains further heightens the need for traceability and rapid problem detection. AI-based sensing is a critical technology addressing these challenges, offering more efficient and reliable quality assurance systems.

## Strategic Significance & Outlook

Flinders University's research demonstrates the immense potential that AI-based sensing solutions bring to the food industry. In the future, these technologies are expected to evolve further, with advanced predictive analytics, autonomous quality control, and integration with blockchain technology, further enhancing the transparency and efficiency of the entire food supply chain. This will lead to reduced food waste, improved resource efficiency, and the provision of safer, higher-quality food to consumers, accelerating the transition to a sustainable food system. Applications to other industrial sectors are also within sight.

---

Source: [https://researchnow.flinders.edu.au/files/229408216/Zhan\\_AI-based\\_P2026.pdf](https://researchnow.flinders.edu.au/files/229408216/Zhan_AI-based_P2026.pdf)

Collected: July 03, 2026 | Automated Research System (Gemini API)

# #44 Quantum-Enhanced Biosensing System Achieves Ultra-Sensitive Early Detection of Alzheimer's and Parkinson's Biomarkers at 12.6 fM

Published July 02, 2026   Research Article   International



## OVERVIEW

A new quantum-enhanced biosensing system has been developed for ultra-sensitive detection of Alzheimer's and Parkinson's disease biomarkers (amyloid- $\beta$ 42, phosphorylated tau181,  $\alpha$ -synuclein). This hybrid sensor utilizes antibody-functionalized nanostructures and nitrogen-vacancy centers in diamond with quantum spin-based readout, achieving 150-300 times better detection limits (e.g., 12.6 fM for A $\beta$ 42) compared to ELISA. The technology offers high diagnostic accuracy, excellent reproducibility, and multiplex detection, providing a scalable and non-invasive approach for early diagnosis of neurodegenerative disorders.

## IN DEPTH

### Key Findings

A groundbreaking quantum-enhanced biosensing system has been developed for the early detection of neurodegenerative disorders, particularly Alzheimer's disease (AD) and Parkinson's disease (PD). This system successfully detects key disease-related biomarkers—amyloid- $\beta$ 42 (A $\beta$ 42), phosphorylated tau181 (p-tau181), and  $\alpha$ -synuclein—with an astonishing limit of detection (LOD) of merely 12.6 fM for A $\beta$ 42, demonstrating sensitivity 150-300 times higher than existing ELISA methods.

### Technical/Clinical Details

This innovative hybrid sensor integrates multiple advanced technologies. First, antibody-functionalized nanostructures efficiently capture the target biomarker molecules. Central to the detection is the technique utilizing nitrogen-vacancy (NV) centers in diamond for quantum spin-based readout. NV centers possess quantum properties that enable them to detect minute changes in external magnetic fields with extreme sensitivity, converting magnetic field variations associated with biomarker binding into electrical signals. This quantum mechanism achieves ultra-high sensitivity and a superior signal-to-noise ratio that was previously unattainable with conventional optical or electrochemical sensors. Furthermore, the system offers high diagnostic accuracy, excellent reproducibility, and multiplex detection capabilities, allowing simultaneous measurement of multiple biomarkers from a single sample, which enhances diagnostic comprehensiveness and efficiency.

### Background & Context

Neurodegenerative diseases like Alzheimer's and Parkinson's are challenging to treat once symptoms emerge, making early diagnosis crucial for successful intervention. However, biomarkers for these diseases are present at very low concentrations in early stages, making them difficult to detect with conventional diagnostic technologies. A $\beta$ 42, p-tau181, and  $\alpha$ -synuclein are known to change with disease progression in cerebrospinal fluid (CSF) and blood, but ultra-early detection via blood tests has been a long-standing challenge. This quantum-enhanced biosensor addresses this unmet need.

## Strategic Significance & Outlook

This quantum-enhanced biosensing system holds the potential to revolutionize early diagnosis of neurodegenerative diseases. Ultra-sensitive detection from non-invasive blood samples enables large-scale screening and facilitates early interventions to slow disease progression. Future developments are expected to include further miniaturization and cost reduction of this technology, along with applications in point-of-care diagnostics and the detection of a broader range of neurological biomarkers. This will accelerate the advancement of personalized medicine and potentially dramatically improve the quality of life for millions of patients.

---

Source: [https://www.accscience.com/journal/JCTR/articles/online\\_first/8138](https://www.accscience.com/journal/JCTR/articles/online_first/8138)

Collected: July 03, 2026 | Automated Research System (Gemini API)

# #45 Kyoto University Yokogawa Lab Advances Microphysiological Systems (MPS) Research from Vascular Biology to Regenerative Medicine

Published June 26, 2026 京都大学 Japan



## OVERVIEW

Kyoto University's Yokogawa Lab is at the forefront of microphysiological systems (MPS) research, employing advanced micro/nanofabrication to investigate a broad spectrum of disciplines including vascular biology, regenerative medicine, and pharmacology. The lab develops MPS for both fundamental and applied research, collaborating with other Japanese institutions to tackle complex biological and medical challenges. Recent activities highlight their dynamic progress, including new internship students and an award for S. Matsumoto at the HAB Research Organization Meeting.

## IN DEPTH

### Background

Microphysiological systems (MPS) have rapidly emerged as transformative technologies in drug discovery, offering a promising alternative to traditional animal testing. These systems enhance the efficiency and predictability of preclinical trials by providing models that more accurately reflect human physiology, a critical need driven by both scientific demands and ethical considerations. The global acceleration of MPS research and development underscores their indispensability for elucidating complex disease mechanisms and advancing regenerative medicine, requiring tools capable of high-precision analysis of cellular dynamics. In Japan, Kyoto University's Yokogawa Lab is at the forefront of these pioneering efforts.

### Key Findings

Kyoto University's Yokogawa Lab is making substantial strides in microphysiological systems (MPS) research, leveraging advanced micro/nanofabrication technologies. Their work is driving progress across a diverse range of fields, including vascular biology, developmental biology, stem cell biology, tissue engineering, regenerative medicine, and pharmacology. Crucially, these sophisticated MPS enable the high-fidelity reproduction of complex in vivo physiological environments in vitro, thereby unlocking new avenues for fundamental scientific discoveries and transformative medical applications.

The Yokogawa Lab's proprietary MPS platforms integrate cells and tissues onto microfluidic chips, meticulously engineered to mimic critical physiological microenvironments such as blood flow, interstitial fluid dynamics, and mechanical stress. This innovative approach facilitates the precise observation and analysis of live cell behavior, intricate cell-cell interactions, and nuanced drug responses—achieving a level of resolution impossible with conventional 2D cultures or animal models. Specific applications include vascular chips for advanced drug screening and studies of vascular formation, as well as organ-on-chip systems tailored for constructing robust disease models and evaluating drug toxicity in personalized medicine contexts. The lab's research prowess is further amplified by active collaborations with other Japanese institutions, pooling diverse expertise to model increasingly complex physiological systems and forge advanced tools for tackling pressing biological questions. Recent milestones include the integration of new internship students, bolstering the lab's research capacity, and an award recognizing S. Matsumoto's research achievements at the HAB Research Organization Meeting.

The strategic significance of the Yokogawa Lab's MPS research extends beyond fundamental biological discoveries; it is poised to dramatically enhance drug discovery efficiency, accelerate personalized medicine initiatives, and drive the realization of regenerative therapies. Looking ahead, the trajectory involves the development of integrated 'human-on-a-chip' systems, which will connect multiple MPS to model highly complex systemic physiological interactions. Moreover, the synergistic integration of these sophisticated MPS platforms with artificial intelligence (AI) and machine learning promises to unlock unparalleled capabilities, creating powerful platforms for predictive diagnostics and optimizing treatment strategies from expansive biological datasets.

---

Source: <https://www.mbsys.me.kyoto-u.ac.jp/en/>

# #46 UMass Amherst's Yingjie Hang Wins ECS Student Research Award for High-Sensitivity POC Diagnostic PLFS Combining Plasmonic Nanoparticles and ML

Published June 26, 2026 UMass Amherst USA



## OVERVIEW

Yingjie Hang, a PhD graduate from UMass Amherst, won the ECS Sensor Division Student Research Award for her work on enhancing the sensitivity of paper lateral flow test strips (PLFS) for point-of-care (POC) diagnostics using plasmonic nanoparticles and machine learning (ML). Her research focused on improving the detection sensitivity for low-abundance antigens, particularly in blood samples, and designing PLFS for SARS-CoV-2 and HIV biomarker detection. This marks a significant step towards realizing next-generation portable biosensors.

## IN DEPTH

### Key Findings

Yingjie Hang, a PhD graduate from UMass Amherst, has been awarded the ECS Sensor Division Student Research Award for her innovative research on enhancing the sensitivity of paper lateral flow test strips (PLFS) for point-of-care (POC) diagnostics. Her work successfully combined plasmonic nanoparticles with machine learning (ML) to dramatically improve the detection capability of low-abundance antigens, particularly in blood samples.

### Technical/Clinical Details

Hang's research involved integrating plasmonic nanoparticles into PLFS design to leverage optical signal enhancement effects, thereby improving sensitivity. This makes it possible to efficiently detect antigens present in minute quantities in blood, such as SARS-CoV-2 and HIV biomarkers. Furthermore, she utilized machine learning algorithms to screen plasmon-enhanced near-infrared fluorescent probes, identifying optimal sensor designs. This approach overcomes the detection limit challenges faced by conventional PLFS, enabling more reliable early diagnostics. PLFS are crucial tools in POC diagnostics due to their simplicity, low cost, and rapid results, but their sensitivity has been a limitation. Hang's technology addresses this critical performance gap.

### Background & Context

Point-of-care diagnostics are indispensable tools for public health, especially in responding to infectious disease pandemics, as they allow rapid diagnosis even in settings without hospital or specialized lab facilities. While paper lateral flow test strips are widely adopted for their ease of use, they have been limited by insufficient sensitivity, particularly for early infections or when disease markers are at low concentrations. Hang's research addresses this unmet need in the field, providing more effective screening and diagnostic tools.

## Strategic Significance & Outlook

Yingjie Hang's research represents a significant step towards the development of next-generation portable biosensors. The integration of plasmonic nanoparticles and machine learning holds the potential to improve the performance of POC diagnostics in a wide range of applications, including early detection of infectious diseases, cancer, and chronic conditions. In the future, these technologies are expected to be incorporated into smaller, more user-friendly devices, making significant contributions to strengthening global health security and advancing personalized medicine. This award highlights how innovative contributions from young researchers are shaping the future of diagnostic technology.

---

Source: <https://www.umass.edu/engineering/news/yingjie-hang-award>

Collected: July 03, 2026 | Automated Research System (Gemini API)

# #47 Modernization of Traditional Chinese Medicine: Chengdu University's rGO-Based LSPR Optical Biosensor Objectively Evaluates Acupuncture Effects

Published June 29, 2026 MDPI Switzerland



## OVERVIEW

This review explores the application of optoelectronic and photonic technologies in modernizing Traditional Chinese Medicine (TCM), addressing the lack of objective diagnostic criteria. It highlights a Localized Surface Plasmon Resonance (LSPR) optical biosensor based on reduced graphene oxide (rGO), developed by Zhou et al. at Chengdu University of Traditional Chinese Medicine. This biosensor successfully evaluates acupuncture effects by covalently bonding anti-inflammatory factor antibodies to the graphene surface, marking a breakthrough in strengthening the scientific basis of TCM diagnostics.

### Key Findings

The application of optoelectronic and photonic technologies, particularly biosensors, is gaining attention for the modernization of Traditional Chinese Medicine (TCM). This review emphasizes that a Localized Surface Plasmon Resonance (LSPR) optical biosensor based on reduced graphene oxide (rGO), developed by Zhou et al. at Chengdu University of Traditional Chinese Medicine, has successfully evaluated acupuncture effects objectively, making a groundbreaking contribution to enhancing diagnostic objectivity in TCM.

### Technical/Clinical Details

This LSPR optical biosensor is built upon the excellent electrical and optical properties of rGO. With its high conductivity and large surface area, rGO serves as an ideal platform for biomolecule immobilization. The research team covalently bonded specific antibodies against anti-inflammatory factors to this graphene surface. After acupuncture treatment, changes in the concentration of anti-inflammatory factors (e.g., specific cytokines or peptides) in the patient's body fluids lead to an antigen-antibody reaction on the sensor surface, which in turn causes a change in the LSPR signal. By optically detecting this signal change, the impact of acupuncture on inflammatory mediators in the body can be quantitatively assessed. This biosensor is revolutionary in that it objectively measures treatment efficacy based on clear physical signals, in contrast to traditional TCM diagnostics that relied on empirical and subjective elements. This is expected to clarify the mechanisms of acupuncture and establish its scientific basis.

### Background & Context

Despite its long history and clinical efficacy, Traditional Chinese Medicine has faced challenges in integrating with modern medicine due to a lack of objective diagnostic criteria and methods for evaluating treatment effectiveness. To bridge this gap, the introduction of modern scientific technologies like optoelectronics and photonics is recognized as essential. Biosensor technology provides a powerful tool for standardizing TCM diagnostic processes and scientifically validating treatment effects.

## Strategic Significance & Outlook

The development of the rGO-based LSPR optical biosensor represents a significant milestone in the modernization of TCM. In the future, this technology is expected to be applied to evaluate more TCM treatments and herbal medicines, enabling multiplex detection of diverse biomarkers. Furthermore, through miniaturization and integration with AI, real-time diagnostics in clinical settings and the optimization of personalized TCM treatments will advance. This is anticipated to enhance the global recognition and acceptance of TCM and accelerate its integration with modern healthcare systems.

---

Source: <https://www.mdpi.com/2304-6732/13/7/628>

Collected: July 03, 2026 | Automated Research System (Gemini API)

# #48 Self-Powered Intelligence Drives Personalized Healthcare: Autonomous Monitoring with Wearable and Implantable Sensors

Published June 25, 2026 Oxford Academic UK



## OVERVIEW

This article discusses the concept of self-powered intelligence in personalized healthcare, emphasizing the synergistic integration of energy harvesting, circuit design, and intelligent algorithms. These technologies enable real-time physiological monitoring, early disease detection, and personalized health interventions. By combining AI, flexible electronics, and biomedical engineering, energy-autonomous sensing, real-time data processing, and adaptive decision-making platforms are being created, forming the foundation for continuous personalized healthcare.

### Key Findings

The concept of self-powered intelligence is shown to play a crucial role in shaping the future of personalized healthcare. This innovative approach, through the synergistic integration of energy harvesting, efficient circuit design, and intelligent algorithms, enables real-time physiological monitoring and early disease detection via wearable and implantable devices.

### Technical/Clinical Details

At the core of self-powered intelligence is energy harvesting technology, which collects ambient energy (e.g., body heat, motion, solar light) and utilizes it to power the device's operation. This minimizes the need for battery replacements and enables long-term autonomous operation of the device. Flexible electronics technology allows for the design of comfortable, discreet sensors that can conform to the skin or be implanted within the body. These sensors continuously collect various physiological data, such as heart rate, body temperature, blood glucose levels, blood pressure, and sweat biomarkers. The collected data are processed and analyzed in real-time by embedded low-power circuits and advanced AI algorithms. AI learns an individual's health baseline and identifies abnormal patterns or early signs of disease, enabling early warnings and personalized health interventions. This framework merges advancements in biomedical engineering with the analytical capabilities of AI, providing a platform that supports continuous health assessment and adaptive decision-making.

### Background & Context

The shift towards personalized and preventive medicine is a major trend in modern healthcare. However, existing monitoring devices have faced challenges such as limited battery life, fragmented data, or issues with user adherence. Self-powered intelligence overcomes these challenges, offering more seamless and less burdensome health management solutions for users. This is particularly valuable in remote patient monitoring, chronic disease management, and health promotion programs.

Strategic Significance & Outlook

Self-powered intelligence has the potential to dramatically improve the accessibility and effectiveness of personalized healthcare. In the future, these systems are expected to become even more sophisticated, evolving towards the detection of a wider range of biomarkers, more complex disease predictive modeling, and autonomous therapeutic recommendations driven by AI. As integration into smart clothing, smart contact lenses, and highly biocompatible implantable devices progresses, individuals will be able to gain a deeper understanding of their health status and actively engage in disease prevention and early treatment. This is expected to significantly contribute to reducing healthcare costs and extending global healthy life expectancies.

---

Source: <https://academic.oup.com/nsr/article/doi/10.1093/nsr/nwag317/8696388>

Collected: July 03, 2026 | Automated Research System (Gemini API)

# #49 Split GFP Fluorescent Biosensors Visualize Real-Time Dynamics of ER-Golgi Membrane Contacts with Super-Resolution Imaging

Published June 30, 2026   Research Article   UK



## OVERVIEW

Researchers have developed gene-encoded fluorescent biosensors utilizing a split GFP/YFP system to specifically label and dynamically observe ER-Golgi membrane contact sites. These advanced probes enable super-resolution imaging to elucidate the real-time structural dynamics of these contact sites in living cells. They effectively capture changes during critical cellular events such as cell division, ER stress, and the disappearance during mammalian neuron development, providing a powerful tool for investigating ER-Golgi interactions in various physiological and pathological contexts.

### Key Findings

Researchers have developed gene-encoded fluorescent biosensors utilizing a split GFP/YFP system, enabling specific labeling and dynamic observation of membrane contact sites between the endoplasmic reticulum (ER) and Golgi apparatus within cells in real-time. These innovative probes offer a powerful tool for elucidating the structural dynamics of these contact sites in living cells through super-resolution imaging.

### Technical/Clinical Details

This biosensor system functions by splitting a fluorescent protein, green fluorescent protein (GFP) or yellow fluorescent protein (YFP), into two non-fluorescent fragments. Each fragment is fused to proteins specifically localized to the ER membrane and the Golgi membrane, respectively. When the ER and Golgi come into close contact, the two fragments re-associate to emit fluorescence, making the membrane contact sites visible. This 'split fluorescent protein' approach allows for high-resolution tracking of minute membrane contact structures and their dynamic changes at the tens-of-nanometer level. It was successfully demonstrated to effectively capture dynamics during critical cellular events, such as the reorganization of ER-Golgi contacts during cell division, changes during ER stress response, and the disappearance of ER-Golgi contacts during mammalian neuronal development. This opens new avenues for understanding how interactions between intracellular organelles are deeply involved in various physiological and pathological processes.

### Background & Context

Membrane contact sites between intracellular organelles are known to play central roles in crucial cellular functions like lipid metabolism, calcium signaling, and autophagy. However, these contact sites are highly transient, dynamic, and exist in minuscule spaces, making real-time observation of their behavior in live cells a long-standing technical challenge. This technology provides a groundbreaking tool to address this significant biological problem and brings a new perspective to cell biology research.

## Strategic Significance & Outlook

This split GFP-based fluorescent biosensor holds great potential to contribute significantly to elucidating the mechanisms of diseases involving ER-Golgi interactions, such as neurodegenerative diseases and metabolic disorders. Its ability to visualize membrane contact dynamics in real-time makes it a promising tool for drug screening to evaluate the effects of drug candidates on interactions between intracellular organelles and to identify new therapeutic targets. In the future, this technology is expected to be extended to elucidate contact sites between other intracellular organelles, deepening the comprehensive understanding of cellular functions and contributing to the development of novel intervention strategies for a wider range of diseases.

---

Source: <https://journals.biologists.com/jcs/article/139/13/jcs264795/372070/Split-GFP-based-fluorescent-biosensors-detect-ER>

Collected: July 03, 2026 | Automated Research System (Gemini API)

# #50 Dexcom Stelo Secures First FDA OTC CGM Approval, Abbott Advances Freestyle Libre 3 Plus with 15-Day Wear & AID Compatibility

Published June 29, 2026 CNET USA



## OVERVIEW

Dexcom's Stelo achieved the first FDA approval for an over-the-counter Continuous Glucose Monitor (CGM) in 2024, significantly broadening access for general consumers. Concurrently, Abbott's Freestyle Libre 3 Plus entered the market as a new model offering extended 15-day wear and compatibility with Automated Insulin Delivery (AID) systems. These advancements enhance user convenience and integrate CGM technology more deeply into both preventive health and advanced diabetes management.

### Key Findings

In 2024, Dexcom's Stelo received FDA approval as the first over-the-counter (OTC) Continuous Glucose Monitor (CGM) in the United States, dramatically expanding access beyond individuals with diabetes to the general health-conscious consumer market. Simultaneously, Abbott introduced its advanced Freestyle Libre 3 Plus, featuring an extended 15-day wear duration and seamless compatibility with Automated Insulin Delivery (AID) systems, significantly improving user convenience and therapeutic integration.

### Technical / Clinical Details

- **Dexcom Stelo:** The landmark 2024 FDA approval for Stelo as an OTC device means it is now available without a prescription. This enables individuals with Type 2 diabetes not on insulin, as well as those pursuing general wellness or athletic performance optimization, to easily monitor their glucose trends. Its integration with other wearables like the Oura ring further positions it as a holistic health management tool.
- **Abbott Freestyle Libre 3 Plus:** Building on the success of previous Freestyle Libre iterations, the 3 Plus model boasts a smaller sensor profile and an extended wear period of up to 15 days, reducing the frequency of sensor changes and patient burden. Crucially, its compatibility with AID systems offers enhanced glucose management capabilities, particularly for insulin-dependent individuals, by enabling automated insulin delivery based on real-time glucose readings.
- **Dexcom G7:** Dexcom's other flagship product, the G7, has also seen significant improvements, including a smaller form factor for better comfort. Its refined alert system provides timely notifications for impending hypo- or hyperglycemia, facilitating quicker intervention and improved patient safety.

## Background & Context

The CGM market is fundamentally transforming diabetes care by providing real-time glucose data, empowering users to better understand and adjust their dietary and exercise habits. The emergence of OTC CGMs marks a pivotal shift, reinforcing CGM's role in early diabetes detection, prevention, and broader wellness management. Insurers are increasingly recognizing the value of CGM technology, leading to wider coverage by health plans.

## Strategic Significance & Outlook

While research into non-invasive CGM technologies continues to accelerate, minimally invasive CGMs remain the standard, prioritized for their proven accuracy and reliability. Key players in the industry are focused on further miniaturization of sensors, extension of wear duration, enhancement of AI-driven data analytics, and the development of comprehensive ecosystems that integrate with other digital health devices. These strategic initiatives are vital for maintaining competitive advantage and driving continued market growth in personalized health monitoring.

---

Source: <https://www.cnet.com/health/nutrition/best-continuous-glucose-monitors-cgm-for-2026/>

Collected: July 03, 2026 | Automated Research System (Gemini API)